

## Durham E-Theses

---

*A high-resolution wide-angle seismic study of the  
crust beneath the Northumberland trough*

Tracey Elizabeth West

### How to cite:

---

West, Tracey Elizabeth (1992) A high-resolution wide-angle seismic study of the crust beneath the Northumberland trough. Doctoral thesis, Durham University.

### Use policy

---

The full-text may be used and/or reproduced, and given to third parties in any format or medium, without prior permission or charge, for personal research or study, educational, or not-for-profit purposes provided that:

- a full bibliographic reference is made to the original source
- a <https://etheses.durham.ac.uk/id/eprint/5603/> is made to the metadata record in Durham E-Theses
- the full-text is not changed in any way

The full-text must not be sold in any format or medium without the formal permission of the copyright holders.

Please consult the [full Durham E-Theses policy](#) for further details.

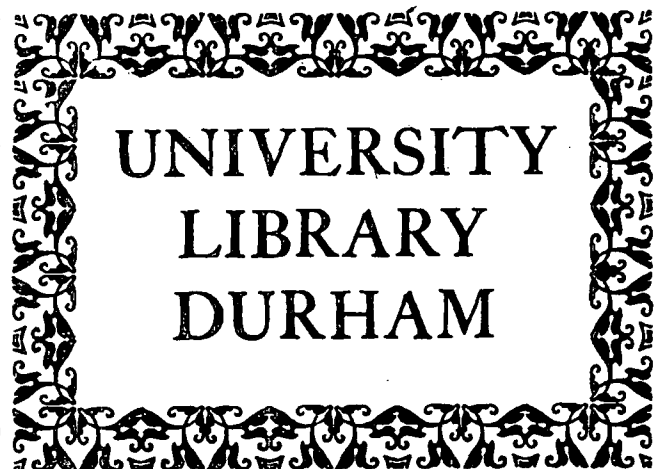
PH.D. THESIS : TRACEY E.WEST 1992

A high resolution wide-angle seismic study  
of the crust beneath the Northumberland Trough

APPENDIX C

REDUCED RECORD SECTIONS OF WIDE-ANGLE DATA RECORDED FROM MOBIL LINE 1

TRACINGS OF TRAVEL TIME PICKS



STATION 54

STATION 47

STATION 57

STATION 55

STATION 40

STATION 39

STATION 37

STATION 36

Thesis  
1992/WES

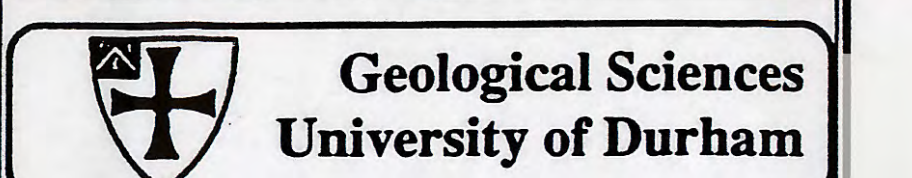
REDUCED RECORD SECTIONS OF WIDE-ANGLE DATA RECORDED FROM MOBIL LINE 2

STATION 47

The copyright of this thesis rests with the author.  
No quotation from it should be published without  
his prior written consent and information derived  
from it should be acknowledged.



26 AUG 1992



**MOBIL 1987**

**WIDE-ANGLE RECORDING**

Common station record section

Station : 57 Shots : Line 1

Source : Bolt airgun, 8500 cu. in.

Shot spacing : 50 m

**PLOT PARAMETERS**

Reduction velocity : 6.0 km/s

TRUE amplitudes

Filter type: Hanning window

Hi: 30.0 Lo: 3.0 Hz

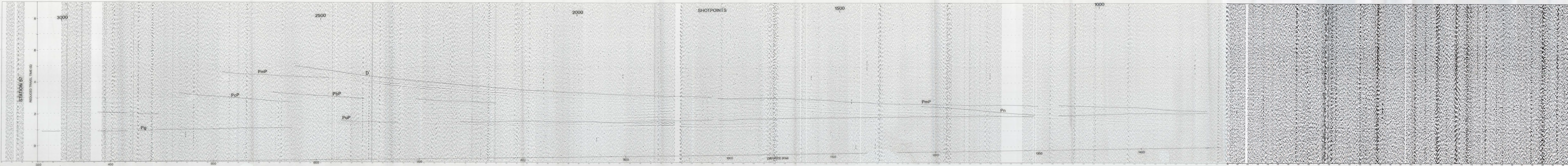
Anti-alias filter: 25.0 Hz

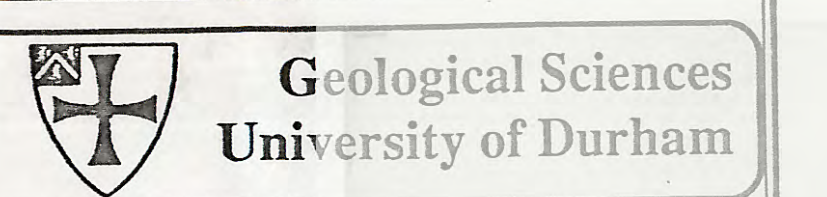
Sampling rate: 100 Hz

Clip : 200 % Mute : 15 %

Record length : 10.0 s

Start time : -1.0 s (reduced time)





Geological Sciences  
University of Durham

**MOBIL 1987**

**WIDE-ANGLE RECORDING**

Common station record section

Station : 54 Shots : Line 1

Source : Bolt airgun, 8500 cu. in.

Shot spacing 50 m

**PLOT PARAMETERS**

Reduction velocity 6.0 km/s

TRUE amplitudes

Filter type: Hanning window

Hi: 30.0 Lo: 3.0 Hz

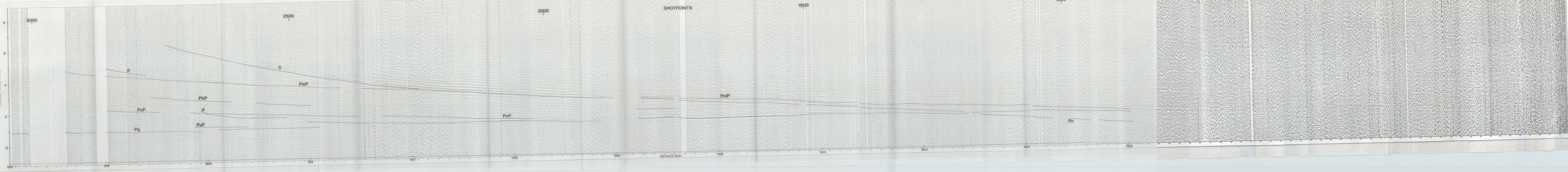
Anti-alias filter: 25.0 Hz

Sampling rate: 100 Hz

Clip : 200 % Mute : 15 %

Record length : 10.0 s

Start time : -1.0 s (reduced time)



Amplitude scaling = 0.5000 Clip at 200.0% Mute at 15.0%

**MOBIL 1987**  
**WIDE-ANGLE RECORDING**

Common station record section

Station : 39 Shots : Line 1

Source : Bolt airgun, 8500 cu. in.

Shot spacing : 50 m

**PLOT PARAMETERS**

Reduction velocity : 6.0 km/s

TRUE amplitudes

Filter type: Hanning window

Hi: 30.0 Lo: 3.0 Hz

Anti-alias filter: 25.0 Hz

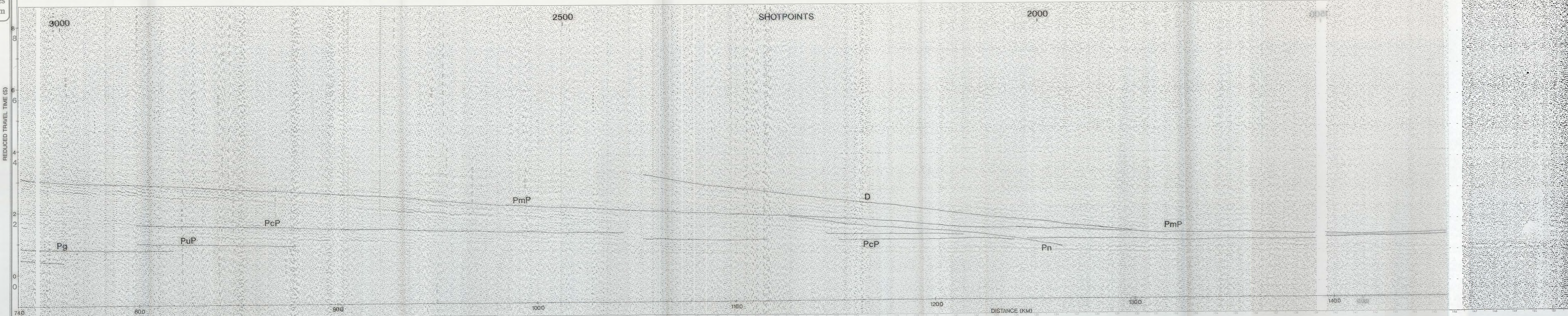
Sampling rate: 100 Hz

Clip : 200 % Mute : 15 %

Record length : 10.0 s

Start time : -1.0 s (reduced time)

STATION 39



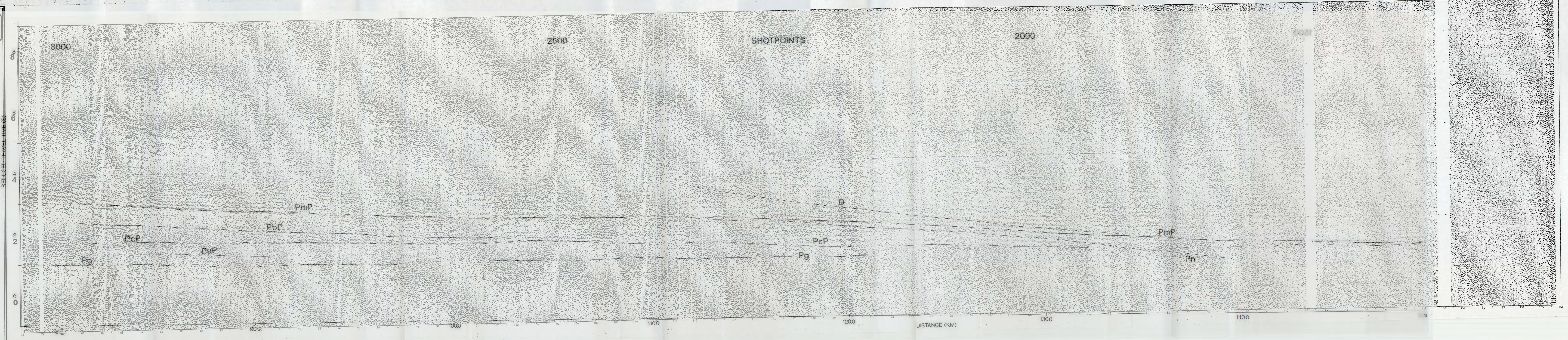


**MOBIL 1987**  
**WIDE-ANGLE RECORDING**

Common station record section  
 Station : 37 Shots : Line 1  
 Source : Bolt airgun, 8500 cu. in.  
 Shot spacing : 50 m

**PLOT PARAMETERS**  
 Reduction velocity : 6.0 km/s

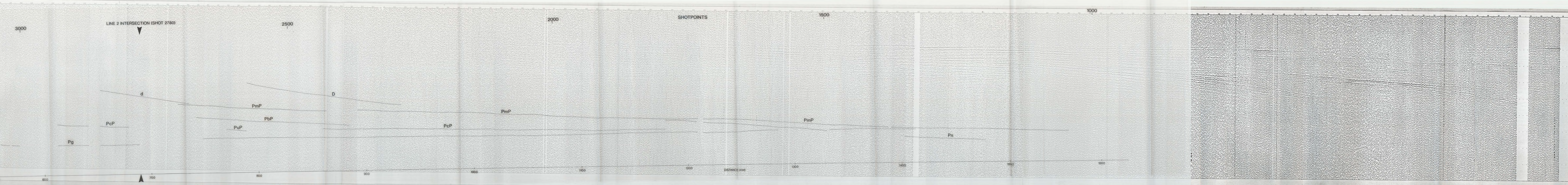
TRUE amplitudes  
 Filter type: Hanning window  
 Hi: 30.0 Lo: 3.0 Hz  
 Anti-alias filter: 25.0 Hz  
 Sampling rate: 100 Hz  
 Clip : 200 % Mute : 15 %  
 Record length : 10.0 s  
 Start time : -1.0 s (reduced time)



Amplitude scaling = 1.0000 Clip at 200.0% Mute at 15.0%

STATION 47

REDUCED TRAVEL TIME (S)



3000

LINE 2 INTERSECTION (SHOT 2780)

2500

2000

SHOTPOINTS

1500

1000

555

600

700

800

900

1000

1100

1200

1300

1400

1500

1600

DISTANCE (KM)

Pg

PcP

PuP

PbP

D

PmP

PcP

PmP

Pn

PmP

**MOBIL 1987**  
WIDE-ANGLE RECORDING

Common station record section

Station : 47 Shots : Line 2

Source : Bolt airgun, 8500 cu. in.

Shot spacing : 100 m

PLOT PARAMETERS

Reduction velocity : 6.0 km/s

TRUE amplitudes

Filter type: Hanning window

Hi: 30.0 Lo: 3.0 Hz

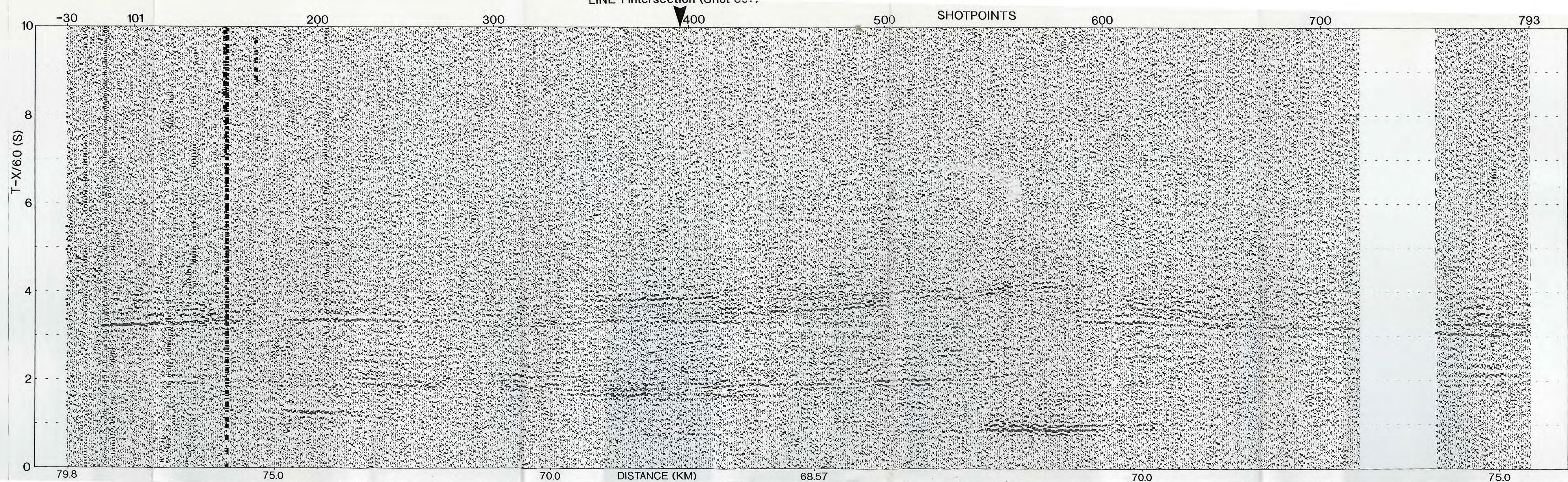
Anti-alias filter: 25.0 Hz

Sampling rate: 100 Hz

Clip : 200 % Mute : 35 %

Record length : 10.0 s

Start time : 0.0 s (reduced time)

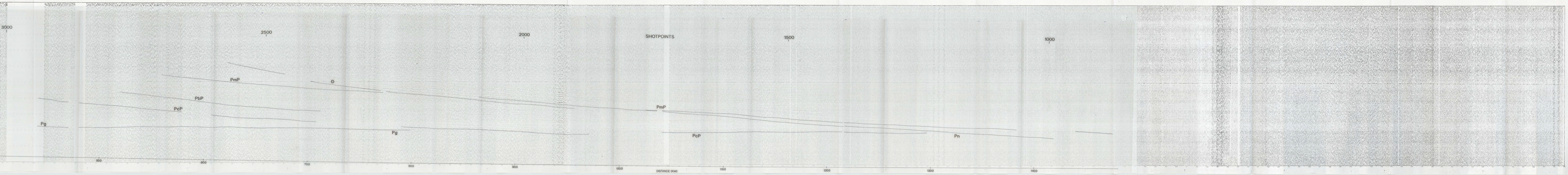


**MOBIL 1987**  
**WIDE-ANGLE RECORDING**

Common station record section  
Station : 55 Shots : Line 1  
Source : Bolt airgun, 8500 cu. in.  
Shot spacing : 50 m

**PLOT PARAMETERS**

Reduction velocity : 6.0 km/s  
TRUE amplitudes  
Filter type: Hanning window  
Hi: 30.0 Lo: 3.0 Hz  
Anti-alias filter: 25.0 Hz  
Sampling rate: 100 Hz  
Clip : 200 % Mute : 15 %  
Record length : 10.0 s  
Start time : -1.0 s (reduced time)



**MOBIL 1987**  
**WIDE-ANGLE RECORDING**

**Common station record section**  
 Station : 40 Shots : Line 1  
 Source : Bolt airgun, 8500 cu. in.  
 Shot spacing : 50 m

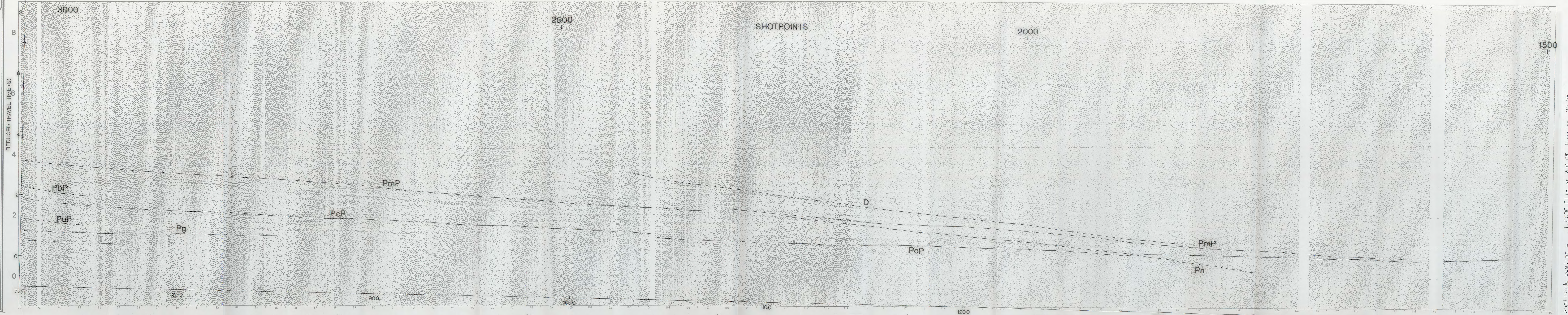
**PLOT PARAMETERS**  
 Reduction velocity : 6.0 km/s  
 TRUE amplitudes

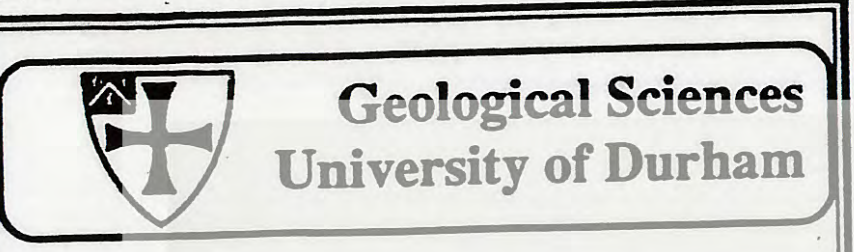
Filter type: Hanning window  
 Hi: 30.0 Lo: 3.0 Hz

Anti-alias filter: 25.0 Hz  
 Sampling rate: 100 Hz

Clip : 200 % Mute : 15 %  
 Record length : 10.0 s

Start time : -1.0 s (reduced time)





**MOBIL 1987  
WIDE-ANGLE RECORDING**

Common station record section  
Station : 36 Shots : Line 1  
Source : Bolt airgun, 8500 cu. in.  
Shot spacing : 50 m

**PLOT PARAMETERS**  
Reduction velocity : 6.0 km/s  
TRUE amplitudes

Filter type: Hanning window  
Hi: 30.0 Lo: 3.0 Hz

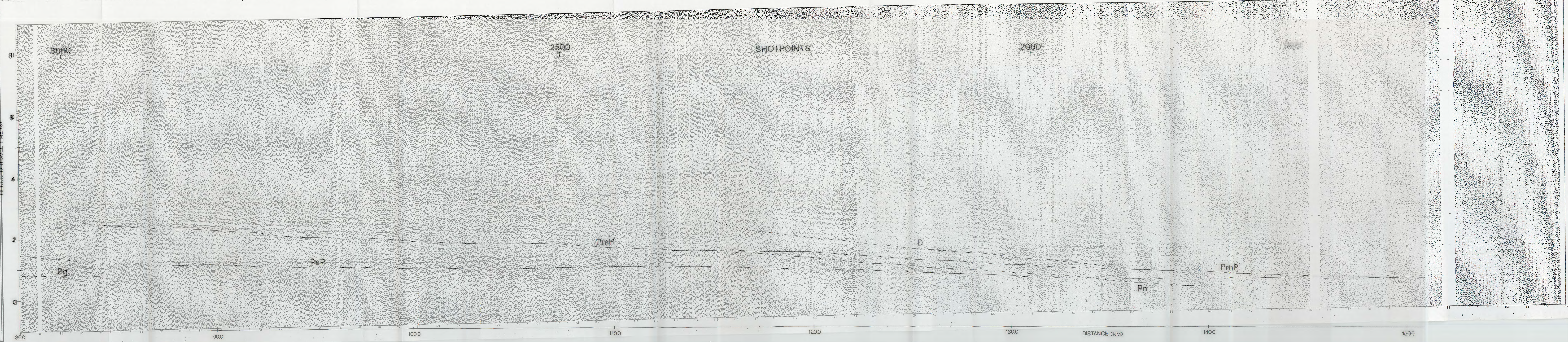
Anti-alias filter: 25.0 Hz

Sampling rate: 100 Hz

Clip : 200 % Mute : 15 %

Record length : 10.0 s

Start time : -1.0 s (reduced time)



Amplitude scaling = 0.6000 Clip at 200.0% Mute at 20.0%