

Durham E-Theses

*Embodied Markings Defining the embodied, liminal,
and sensory character of the earliest Palaeolithic cave
markings*

BARBARA OOSTERWIJK

How to cite:

OOSTERWIJK, BARBARA (2023) Embodied Markings Defining the embodied, liminal, and sensory character of the earliest Palaeolithic cave markings. Doctoral thesis, Durham University.

Use policy

The full-text may be used and/or reproduced, and given to third parties in any format or medium, without prior permission or charge, for personal research or study, educational, or not-for-profit purposes provided that:

- a full bibliographic reference is made to the original source
- a <https://etheses.durham.ac.uk/id/eprint/15220/> is made to the metadata record in Durham E-Theses
- the full-text is not changed in any way

The full-text must not be sold in any format or medium without the formal permission of the copyright holders.

Please consult the [full Durham E-Theses policy](#) for further details.

Embodied Markings

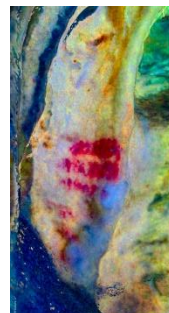
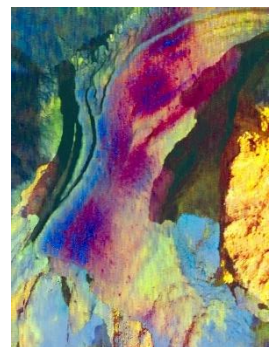
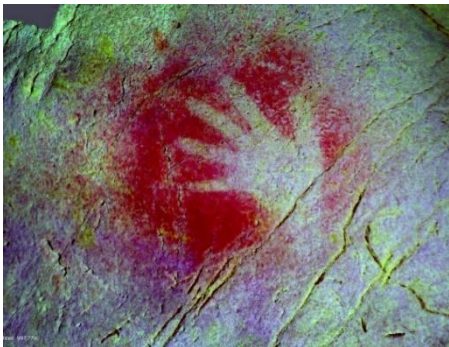
Defining the embodied, liminal, and sensory character of the earliest
Palaeolithic cave markings

Two volumes

Volume II

Databases and 3D models

Barbara Oosterwijk



Databases

The databases are included in a ZIP folder – Volume II – Databases.

1 - Database embodied markings preliminary analysis

Includes the data from 62 sites in France and 76 in Spain according to 7 variables. Note that the database also included the category of finger flutings, although this category was left out of the preliminary analysis. The database also includes data for Italy and Eastern Europe.

2 – Database El Castillo 2021

Database with the data from fieldwork performed at El Castillo in November and December 2021.

3 – Database Pech Merle 2021

Database with the data from fieldwork performed at Pech Merle in November 2021.

4 – Database Ardales 2021

Database with the data from fieldwork performed at Ardales in December 2021.

5 – Database embodied markings worldwide

This database was used to discuss the embodied markings found outside of Europe for chapter eight - body art in context.

6 - 3D models

For this thesis the following 3D models were produced using a Sony A3000 camera as well as a Samsung A52 camera and the software Agisoft Metashape.

- 77 3D models were produced of the embodied markings of the panels at El Castillo.
- 31 3D models were produced of the embodied markings of the panels at Pech Merle.
- 46 3D models were produced of the embodied markings of the panels at Ardales.

The 3D models are available upon request from the author.