

Durham E-Theses

*The Yōkai Imagination of Symbolism: The Role of
Japanese Ghost Imagery in late 19th & early 20th
Century European Art Volumes I-III*

SAMANTHA SUE CHRISTINA ROWE

How to cite:

ROWE, SAMANTHA SUE CHRISTINA (2015) *The Yōkai Imagination of Symbolism: The Role of Japanese Ghost Imagery in late 19th & early 20th Century European Art Volumes I-III*. Masters thesis, Durham University.

Use policy

The full-text may be used and/or reproduced, and given to third parties in any format or medium, without prior permission or charge, for personal research or study, educational, or not-for-profit purposes provided that:

- a full bibliographic reference is made to the original source
- a <https://etheses.durham.ac.uk/id/eprint/11477/> is made to the metadata record in Durham E-Theses
- the full-text is not changed in any way

The full-text must not be sold in any format or medium without the formal permission of the copyright holders.

Please consult the [full Durham E-Theses policy](#) for further details.

**The *Yōkai* Imagination of Symbolism:
The Role of Japanese Ghost Imagery
in late 19th & early 20th Century European Art
Volumes I-III**

Samantha Sue Christina Rowe

Volume II: Illustrations



MA by Thesis

School of Education (History of Art)

University of Durham

2015

Illustrations:

1. *Sara-yashiki, Hyaku Monogatari*,
Katsushika Hokusai (1760-1849), c. 1830
woodblock print on paper, (dimensions unknown)
Image location: London, © Trustees of the British Museum 18
2. *Shunen (Implacable Malevolence), Hyaku Monogatari*
Katsushika Hokusai (1760-1849), c. 1830
woodblock print on paper, (dimensions unknown)
Image location: London, © Trustees of the British Museum 19
- 3a. *Oiwa-san, Hyaku Monogatari*
Katsushika Hokusai (1760-1849), c. 1830
woodblock print on paper, (dimensions unknown)
Image location: London, © Trustees of the British Museum 20
- 3b. *The Spirit of Oiwa*
Utagawa Kuniyoshi (1797-1868), 1847-1848
woodblock print on paper, (dimensions unknown)
Image location: Oxford, © Ashmolean Museum, University of Oxford; this item is from Eastern
Art Online: Yousef Jameel Centre for Islamic and Asian Art, jameelcentre.ashmolean.org,
Ashmolean Museum, University of Oxford [EA1971.61] 21
- 4a. Illustration of an *akashita, Hyakkai-zukan (The Illustrated Volume of 100 Demons)*
Sawaki Suushi (dates unknown), 1737
emaki (picture scroll), (dimensions unknown)
Image location: Kyoto, International Research Center for Japanese Studies 22
- 4b. Illustration of a *hyōsube* and a *nure-onna, Hyakkai-zukan (The Illustrated Volume of 100 Demons)*
Sawaki Suushi (dates unknown), 1737
emaki (picture scroll), (dimensions unknown)
Image location: Kyoto, International Research Center for Japanese Studies 23
- 4c. Illustration of a *yamawaro, Hyakkai-zukan (The Illustrated Volume of 100 Demons)*
Sawaki Suushi (dates unknown), 1737
emaki (picture scroll), (dimensions unknown)
Image location: Kyoto, International Research Center for Japanese Studies
- 4d. Illustration of a *kami-kiri, Hyakkai-zukan (The Illustrated Volume of 100 Demons)* 24
Sawaki Suushi (dates unknown), 1737
emaki (picture scroll), (dimensions unknown)
Image location: Kyoto, International Research Center for Japanese Studies
- 4e. Illustration of an *otoroshi, Hyakkai-zukan (The Illustrated Volume of 100 Demons)* 25
Sawaki Suushi (dates unknown), 1737
emaki (picture scroll), (dimensions unknown)
Image location: Kyoto, International Research Center for Japanese Studies 26

4f. Illustration of a <i>rokuro-kubi</i> , <i>Hyakkai-zukan (The Illustrated Volume of 100 Demons)</i> As above	27
4g. Illustration of a <i>yama-uba</i> , <i>Hyakkai-zukan (The Illustrated Volume of 100 Demons)</i> As above	28
4h. Illustration of a <i>yūrei</i> , <i>Hyakkai-zukan (The Illustrated Volume of 100 Demons)</i> As above	29
5a. <i>The Taira Ghosts Attacking Yoshitsune's Ship</i> Utagawa Kuniyoshi (1797-1868), 1843-1845 woodcut on paper, 32.5 x 67.9 cm Image location: Oxford, © Ashmolean Museum, University of Oxford; This item is from Eastern Art Online: Yousef Jameel Centre for Islamic and Asian Art, jameelcentre.ashmolean.org , Ashmolean Museum, University of Oxford [EA1971.161].	30
5b. <i>The Taira Ghosts Attacking Yoshitsune's Ship</i> , (left panel) As above	31
5c. <i>The Taira Ghosts Attacking Yoshitsune's Ship</i> , (middle panel) As above	32
5d. <i>The Taira Ghosts Attacking Yoshitsune's Ship</i> , (right panel) As above	33
6a. <i>Minamoto Raiko and the 'Earth Spider'</i> , (V&A title: <i>The Spider Monster Creating Monsters in the Mansion of Minamoto no Yorimitsu</i>) Utagawa Kuniyoshi (1797-1861), 1843 woodcut on paper, 34.6 cm x 72.7 cm Image location: London, © Victoria and Albert Museum [E.10535-1886]	34
6b. <i>Minamoto Raiko and the 'Earth Spider'</i> , (V&A title: <i>The Spider Monster Creating Monsters in the Mansion of Minamoto no Yorimitsu</i>), (left panel) As above	35
6c. <i>Minamoto Raiko and the 'Earth Spider'</i> , (V&A title: <i>The Spider Monster Creating Monsters in the Mansion of Minamoto no Yorimitsu</i>), (middle panel) As above	36
6d. <i>Minamoto Raiko and the 'Earth Spider'</i> , (V&A title: <i>The Spider Monster Creating Monsters in the Mansion of Minamoto no Yorimitsu</i>), (right panel) As above	37
7. <i>The Web of Government</i> Ukita Ikkei (1795-1859) Hanging scroll on paper, ink, colour and gold wash, 168 x 58.9 cm Image location: Image location: Hyōgo, Koshimono Kōichi Coll.	38

8. *Inada Kyūzō Shinsuke murders the kitchenmaid suspended from a rope, Eimei nijūhasshūko (Twenty-eight Famous Murders with Poems)*
Tsukioka Yoshitoshi (1839-1892), c.1867
woodblock print on paper, 34.9 x 24.1 cm
Image location: San Francisco, Fine Arts Museum of San Francisco 39
9. *The Hag of Adachigahara*
Tsukioka Yoshitoshi (1839-1892), 1885
38 x 26 cm, ōban
Image location: Kyoto, International Research Center for Japanese Studies 40
10. *Kohada Koheiji, Hyaku Monogatari*
Katsushika Hokusai (1760-1849), c. 1830
woodblock print on paper, (dimensions unknown)
Image location: London, © Trustees of the British Museum 41
11. *Neue Zeyttung auß der Insel Japonien*
Michael Manger (1570-1603), 1586
Image location: London, © Trustees of the British Museum 42
12. *The Scruple*
William Sharp (1749-1824), 1781
Image location: London, © Trustees of the British Museum 43
13. *Yorimitsu and the Earth Spider*
Katsushika Hokusai (1760-1849), c.1818
(dimensions unknown)
Image location: Duret, 1900: 194-195; pl. 320 44
14. *Kouaidan hiyak'ki dzuyé (Apparitions of a Hundred Monsters)*
Katsukawa Shunyei (1762-1819), Woodblock print on paper
(dimensions unknown)
Image location: Paris, Bibliothèque Nationale 45
15. *The Temptation of Buddha*
Katsushika Hokusai (1760-1849)
published in Gillot, 1880s, pl. 233 again I think there is a link to the publication
Image location: Gillot, 1880s: pl. 233 46
16. *Apparition of the Courtesan, 1765*
Ran'ū (dates unknown), 1765
woodblock print, ink and colour on paper, 28x19.4cm
Image citation: Formerly Vever Collection, now Freer Gallery of Art and Arthur M. Sackler Gallery. 47
17. *Onoe Matsusuke I playing the role of Kohada Koheiji*
Utagawa Toyokuni (1769-1825), 1808
Woodblock print on paper, 37x25cm
Image location: London, © Trustees of the British Museum 48

18. *Okamé: Les Amis de l'art japonais dîneront au restaurant Cardinal*, One of several invitation cards printed for Société des amis de l'art japonais, 1870-1914
Roche, Pierre (1855-1922), 1908
(medium and dimensions unknown)
Image location: Paris, Bibliothèque Nationale de France, département Estampes et photographie [PET FOL-EF-441 (A,5)] 49
19. Front cover of *Le Japon artistique*
No. 20, December, 1889, No. 30 ,October, 1890
Siegfried (Samuel) Bing (1838-1905) (editor), 1888-1891
journal page
Image location: Digital Library for the Decorative Arts and Material Culture 50
20. Front cover of *Catalogue de l'exposition retrospective de l'art japonais*
Louis Gonse (editor), 1883
catalogue page 51
21. Netsuke representing Futen, The Storm Spirit
(artist unknown), 18th century
wood with inlays, 8.3 x 2.9 x 2.5 cm
Image location: Los Angeles County Museum of Art 52
22. *Okabe Metamorphosed into a Cat*
Utagawa Kunisada , 1835
woodcut print on paper, 36.7 x 77.4 cm
An imprint of this work is in Monet's collection of Japanese prints at Giverny. 53
23. *Amaterasu coming out of the cave*
Gyokuei, late 19th century
98 x 2.3 cm - the Van Gogh catalogue of Japanese prints cites the size of this as 980x23 mm however do you think that is a mistake, surely it should be 980x230or 98x23 as it is described as a 'small kakemono'?
Image location: van Rappard-Boon et al., 2006: 68, pl. 22 54
24. *Okabe, Tōkaidō gojusan-tsui (Fifty-three pairings along the Tōkaidō Road)*
Utagawa Kuniyoshi (1797-1861), 1843-1845
Woodcut print on paper, 36.1 x 25.6 cm
Image location: London, © The Trustees of the British Museum 55
25. *Onoe Baikō as a female ghost holding a baby / Ghost of the Swamp*
Utagawa Kunisada, c. 1830
ōban; nishiki-e, 38.1 x 26.4 cm
Image location: Amsterdam, Van Gogh Museum 56
26. *Kuwana, Tōkaidō gojusan-tsui (Fifty-three pairings along the Tōkaidō Road)*
Utagawa Kuniyoshi (1797-1861), 1843-1845
Woodcut on paper, 37.3 x 25.2 cm
Image location: London, © The Trustees of the British Museum 57

27. <i>Nakamura Shikan II as Tadanobu</i> Shunbaisai Hokuei (d. 1837), 1835 Image location: London, © Victoria and Albert Museum [E.5016-1886]	58
28a. <i>The Rescue of Minamoto no Tametomo by Goblins</i> Utagawa Kuniyoshi (1797-1861), c.1851 Image location: London, © Victoria and Albert Museum [E.10605-1886]	59
28b. <i>The Rescue of Minamoto no Tametomo by Goblins</i> , (left panel) As above	60
28c. <i>The Rescue of Minamoto no Tametomo by Goblins</i> , (middle panel) As above	61
28d. <i>The Rescue of Minamoto no Tametomo by Goblins</i> , (right panel) As above	62
29a. <i>The Giant Octopus and Others; Newly Published Quick Changes: Two-faced Monsters</i> Utagawa Sadahide, 1830-1844 Ink and colour on paper, (dimensions unknown) Image location: London, © Victoria and Albert Museum, London [E.2198-1909]	63
29b. <i>Mouse Monster and Others; Newly Published Quick Changes: Two-faced Monsters</i> As above	64
Plate 29c. <i>Fox-Genkurô and Others; Newly Published Quick Changes: Two-faced Monsters</i> As above	65
29d. <i>The Monster of Good and Evil and Others; Newly Published Quick Changes: Two-faced Monsters</i> As above	66
29e. <i>Mendicant Monk in Katsushika and Others; Newly Published Quick Changes: Two-faced Monsters</i> As above	67
30. <i>Catalogue of the Valuable Collection of Japanese Colour Prints, The Property of John Stewart Happer, Esq.</i> Sotheby, Wilkinson & Hodge, 1909 catalogue entry Image location: courtesy of Brian Page Antiques	68
31. Vase Edward William Godwin (1833-1886); William Watt, c. 1877 Slipware, 20.7 x 19 cm Image location: London, Victoria & Albert Museum [C.2-2008]	69
32 a-f. Illustrations for <i>Bon-Mots of Sydney Smith and R. Brinsley Sheridan</i> Aubrey Vincent Beardsley (1872-1898), 1893	70

- 32g. *J'ai baisé ta bouche Iokanaan*, Design for 'The Climax' for Oscar Wilde's 'Salome'
Aubrey Vincent Beardsley (1872-1898), 1893
line block print, 22.8 x 12.7 cm
Image location: a-f. Jerrold, 1893: 40; 133; 179; 51; 79; 92; g. London, © Victoria and Albert
Museum [E.456-1899] 70
33. Illustration accompanying *The Tongue Cut Sparrow, Tales of Old Japan*
(details unknown)
Image location: Mitford, 1871: 250 71
34. Illustration of a *rokuro-kubi*, *Hokusai Manga* (Vol. unknown)
Katsushika Hokusai (1760-1849),
woodcut on paper
Image location: Bouquillard & Marquet, 2007: 132-133, pl. 2 72
35. *Witches' Sabbath*
Hans Baldung, called 'Grien', 1510
Woodcut, 37.5 x 25.4 cm
Image location: London, © Trustees of the British Museum 73
36. *The Temptation of Saint Anthony, Isenheim Altarpiece*, (detail)
Matthias Grünewald (c. 1475–80-1528), c.1512-1516
oil on panel, (dimensions unknown)
Image location: Colmar france, Musée Unterlinden 74
37. *The Ghost of a Flea*
William Blake 1757–1827, c.1819–20
tempera and gold on mahogany, 21.4 x 16.2 cm
Image location: London, Tate Britain [N05889] 75
38. Illustrations of *Oni, Japanese scroll*
(artist unknown),
emaki, (date and dimensions unknown)
Image location: Kyoto, International Research Center for Japanese Studies 76
39. *The Nightmare*
Henry Fuseli (1741-1825), 1781
oil on canvas, 101.6 x 126.7 cm
Image location: Detroit, Detroit Institute of Arts [55.5.] 77
40. *The Blue Bower*
Dante Gabriel Rossetti (1828-1882), 1865
oil on canvas, 84 x 70.9 cm
Image location: Bridgemanart.com 78
41. *Caprice in Purple and Gold: The Golden Screen*
James Abbott McNeil Whistler (1834-1903), 1864
oil on wood panel, 50.1 × 68.5 cm
Image location: Freer Gallery of Art and Arthur M. Sackler Gallery [F1904.75a] 79

42. *Still-life with Vase with Japanese Samurai Warrior*
 Odilon Redon (1840-1916), c. 1905
 pastel on paper, 228.6 x 184.2 cm
 Image location: Oslo, Galleri K 80
43. *The Marsh Flower, A Sad Human Head, No. 2, Homage to Goya*
 Odilon Redon (1840-1916), 1885
 lithograph on paper, 27.3 x 20.4 cm
 Image location: New York, Museum of Modern Art 81
44. *Then There Appears a Singular Being, with the Head of a Man and the Body of a Fish, No. 5, The Temptation of St. Anthony*
 Odilon Redon (1840-1916), 1888
 lithograph in black on ivory China paper, laid down on ivory wove paper (chine collé),
 27.6 x 17.1 cm
 Image location: Art instituted of Chicago, The Stickney Collection [1920.1637] 82
45. Japanese illustration of a *ningyo* (mermaid demon)
 (artist unknown),
 late Edo period, (medium and dimensions unknown)
 Image location: Collection of Jan Cock Blomhoff 1817-1824; now Leiden: National Museum of
 Ethnography (Museum Volkenkunde). 83
46. Postcard of a *ningyo* 'mummy'
 (artist unknown), late 19th century
 postcard
 Image location: Ostend, Musée Stracké. 84
47. *Japanese ningyo 'mummy'*
 (artist unknown)
 late Edo period, fish and animal parts held together with string and paper
 Image location: Collection of Jan Cock Blomhoff 1817-1824; now Leiden: National Museum of
 Ethnography (Museum Volkenkunde). 85
48. *Woman wearing a toque and a mermaid's tail*
 Odilon Redon (1840-1916), 1898
 lithograph on paper, 23.7 x 22.9 cm
 Image location: New York, Museum of Modern Art. 86
49. *Skiapod*
 Odilon Redon (1840-1916), 1892
 etching and drypoint, 20.1 x 14.9 cm
 Image location: Paris, Bibliothèque Nationale 87
50. *A Death's Head crowned with Roses*
No. 6, The Temptation of St. Anthony, first serie
 Odilon Redon (1840-1916), 1888
 Lithograph, 29.7 x 21.4 cm
 Image location: New York, Museum of Modern Art [126.1956.6] 88

51. *Cat Fish (Namazu-e)*
(artist unknown), 1855
woodblock print on paper, (dimensions unknown)
Image location: Kyoto, International Research Centre for Japanese Studies 89
52. *And the eyes without heads were floating like molluscs, No. 13, The Temptation of St. Anthony, third series*
Odilon Redon (1840-1916), 1896
Lithograph, 32 x 22.4 cm
Image location: Cambridge, Fitzwilliam Museum 90
53. *Araignée (Spider)*
Odilon Redon (1840-1916), 1887
lithograph, 27.8 x 2.16 cm
Image location: London, © The Trustees of the British Museum [1888,0619.153] 91
54. *La Bataille de os (The Battle of the Bones)*
Odilon Redon (1840-1916), 1881
charcoal drawing, 44.7 x 37.3 cm 92
55. *Frolicking Skeletons, (detail)*
Kawanabe Kyōsai, 1870s-1880s
hanging scroll, ink on silk, (dimensions unknown)
Image location: a. Otterlo, Kröller-Müller Museum; b. Richard Harris Collection 92
56. *Hantise (Obsession)*
Odilon Redon (1840-1916), 1894
Lithograph, 36.1 x 22.9 cm
Image location: Washington, DC, National Gallery of Art [1951.10.456]
93
57. *Onoe Kikugorō III as the ghost of Oiwa in Irohagana Yotsuya Kaidan*
Utagawa Kuniyoshi (1797-1861), 1833
woodblock print on paper, 24.8 x 37.5 cm
Image location: Lyon Collection [<http://www.woodblockprints.org/>] 93
58. Illustration of a *yūrei*, *Hokusai Manga* Vol. 13: 59
Katsushika Hokusai (1760-1849), 1849
woodcut on paper, 15.9 x 22.5 cm
Paris, Bibliothèque Nationale, Department of Prints & Photography 94
59. *Blossoming (Écllosion), No. 1, Dans le rêve (In the Dream)*
Odilon Redon (1840-1916), 1879
lithograph on paper, 32.8 x 25.7 cm
Image location: New York, The Museum of Modern Art 94
60. *Le Polype difforme flottait sur les rivages, sorte de cyclope souriant et hideux (The deformed polyp floated on the shores, a sort of smiling and hideous Cyclops), No. 3, Les Origines (The Origins)*
Odilon Redon (1840-1916), 1883
Lithograph, 21.3 x 20 cm
Image location: Washington, DC, National Gallery of Art [1951.10.460] 95

- 61a. Illustration of a *hitosume-nyūdō*, *Hyakkai-zukan (The Illustrated Volume of 100 Demons)*
Sawaki Suushi, 1737
emaki (picture scroll), (dimensions unknown)
Image location: Kyoto, International Research Center for Japanese Studies 96
- 61b. *Kaseneno bobokon (Pussy Demon of Kasane)*, *Kaidan hyakki yagyō (Ghost Stories: The Night Parade of One Hundred Demons)*
Utagawa Kuniyoshi (1797-1861), 1836
woodcut on paper, 13 x 9 cm
Image location: Kuniyoshi Project 97
62. *After Reading a story by Edgar Poe / The Eye*
Odilon Redon (1840-1916), 1883
charcoal on paper, 40.2 x 33.3 cm
Image location: Santa Barbara, Santa Barbara Museum of Art 98
63. *L'Oeuf (The Egg)*
Odilon Redon (1840-1916), 1885
Lithograph, 29.3 x 22.5 cm
Image location: London, © Trustees of the British Museum [1949,0411.3488] 99
- 64a. *Sagifuchi ni Ippon'ashi*, detail of square seventeen from *Mukashi banashi Bakemono Sugoroku (Old Monster Yarns Backgammon)*
Utagawa Yoshikazu, 1858
woodcut printed board game, ink and color on paper, 52 x 81.3 cm
Image location: Oregon, USA, Jordan Schnitzer Museum of Art [1969:37.92] 100
- 64b. *Kasa Ippon-ashi (One Legged Umbrella Demon)*
Gosotei Hirosada (c. 1810-1864), 1855
Chūban
Image location: Private Collection. Formerly: Somerset, UK, Toshidama Gallery 100
65. *Cactus Man*
Odilon Redon (1840-1916), 1881
Charcoal, 49.5 x 37.5 cm
Image location: USA, The Ian Woodner Family Collection 101
66. *Neko no ateji (Cat Homophones)*
Utagawa Kuniyoshi (1797-1861), 1842
woodblock print on paper, 36 x 25 cm
Image location: Kuniyoshi Project 102
67. *Different peoples inhabit the countries of the ocean, La Tentation de Saint-Antoine, Paris*
Odilon Redon (1840-, 30.8 x 23 cm
Image location: Cambridge, Fitzwilliam Museum 103

68. *The Little One Is Dreaming, Étude*, (study)
 Paul Gauguin (1848–1903), 1881
 oil on canvas, 60 x 74 cm
 Image location: Copenhagen, Ordrupgaard 104
69. *The Yellow Christ*
 Paul Gauguin (1848-1903), 1889
 oil on canvas, 92.1 x 73.3 cm
 Image location: New York, Albright-Knox Art Gallery 105
70. *Christ from the Trémalo chapel, Pont Aven*
 (artist unknown),
 painted wood carving, (date and dimensions unknown)
 Location: Pont Aven, Trémalo chapel 105
71. *Soyez mystérieuses (Be Mysterious)*
 Paul Gauguin (1848-1903), 1890
 bas-relief, oil on wood, 73 x 95 cm
 Image location: Paris, Musée d'Orsay [RF 3405] 106
72. *Still Life with Horse's Head*
 Paul Gauguin (1848-1903), 1886
 oil on canvas, 49 x 38.5 cm
 Image location: Tokyo, Bridgestone Museum of Art, Ishibashi Foundation 107
73. *Nature morte à l'estampe japonaise (Still Life with Japanese Print)*
 Paul Gauguin (1848-1903) , 1888
 oil on canvas , 31.7 x 55.5 cm
 Image location: New York, Christie's Impresionist and Modern Art (Evening Sale), 7th
 May 2003 108
74. *Nature morte à l'estampe japonaise (Still Life with Japanese Print)*
 Paul Gauguin (1848–1903), 1889
 oil on canvas, 72.4 x 93.7 cm
 Image location: Tehran, Museum of Contemporary Art 109
75. *Ichikawa Kodanji playing the Hunter Nagohe*
 Utagawa Yoshiiku (1833-1904), 1864
 woodblock print on paper, (dimensions unknown)
 Image location: Frome, Toshidama Gallery 110
76. *The Schuffenecker Family / Schuffenecker's Studio*
 Paul Gauguin (1848-1903), 1889
 oil on canvas, 73 x 92 cm
 Image location: Paris, Musée d'Orsay [RF 1959 8] 111

77. *Vision After the Sermon: Jacob Wrestling with the Angel*
 Paul Gauguin (1848-1903), 1888
 oil on canvas, 74.4 x 93.1 cm
 Image location: Edinburgh, National Galleries of Scotland 112
78. *Hodogaya, Totsuka, Fujisawa and Hiratsuka, Tokaido gojisan-eki yon shuku meisho (Fifty-three Stations of the Tōkaidō Road)*
 Utagawa Kuniyoshi (1797-1861), c. 1835
 ōban yoko-e, 25.5 x 37.2 cm
 Image location: London, © Trustees of the British Museum [2008,3037.03304] 113
79. *Still Life with Onions, Beetroot and a Japanese Print*
 Paul Gauguin (1848-1903), 1889
 oil on canvas. 40.6 x 52.1 cm
 Image location: Private collection 114
80. *Warai Hannya, Hyaku Monogatari*
 Katsushika Hokusai (1760-1849), c. 1830
 woodblock print on paper, (dimensions unknown)
 Image location: London, © Trustees of the British Museum [1921,0511,0.14] 115
81. *Self-Portrait*
 Paul Gauguin (1848-1903), 1889
 oil on wood, 79.2 x 51.3 cm
 Image location: Washington DC, The National Gallery of Art 116
82. *Soyez amoureuses vous serez heureuses (Be In Love and You Will Be Happy)*
 Paul Gauguin (1848-1903), 1889
 carved and painted linden wood, 95 x 72 x 6.4 cm
 Image location: Boston, Museum of Fine Arts Boston [57.582] 117
- 83a. *Soyez mystérieuses (Be Mysterious) , (House of Pleasure), (bottom left panel)*
 Paul Gauguin (1848-1903), 1901-1902
 bas-relief, polychromed sequoia wood
 32 x 153 x 3 cm
 Image location: Paris, Musée d'Orsay [RF 4290] 118
- 83b. *Soyez mystérieuses (Be Mysterious) , (House of Pleasure), (bottom left panel)*
 as above 118
84. *Head of a Young Girl*, 1893-1894
 Clay, varnished and heightened in places with dark red pigment, 15.2 x 26 x 18 cm
 Image location: Carmen Thyssen-Bornemisza Collection on deposit at Madrid, Museo Thyssen-Bornemisza [CTB.DEC99.36] 119

85. *The Loss of Virginity*
 Paul Gauguin (1848–1903), 1890-1891
 oil on canvas, 90.2 x 130.2 cm
 Image location: Norfolk (VA), Chrysler Museum of Art [71.510] 120
86. *The actor Nakamura Shikan as Minamoto (no) Kurō Kitsune*
 Kinusada, 1867
 ōban nishiki-e, 37.2 x 25.3 cm
 Image location: van Rappard-Boon, van Gulik & van Bremen-Ito, 2006: 227, pl. 315 121
87. *Kusunoha-gitsune doji ni wakaruru no zu (The Fox-Woman Kusunoha Leaving Her Child), Shinkei sanjurokkaisen (New forms of thirty-six ghosts)*
 Tsukioka Yoshitoshi (1839-1892), 1890
 woodblock print on paper , 36.9 x 25.1 cm
 Image location: Claremont, California, Ruth Chandler Williamson Gallery, Scripps College [93.3.41] 122
88. *Princess Yaegaki*
 Utagawa Kuniyoshi (1797–1861), 19th century
 woodblock print on paper, 36.8 x 25.4 cm
 Image location: New York, Metropolitan Museum of Art 123
89. *Otome (Maiden), Waken nazorae Genji (Japanese and Chinese Comparisons for the Chapters of the Genji)*
 Utagawa Kuniyoshi (1797-1861), 1855
 ōban tate-e, 36.9 x 25.9 cm
 Image location: London, © Trustees of the British Museum [2008,3037.06303] 124
- 90a. *Tahitian Woman with Evil Spirit, (recto)*
 Paul Gauguin (1848-1903), c. 1900
 oil transfer drawing, (dimensions unknown);
Tahitian Woman with Evil Spirit, (verso)
 Paul Gauguin (1848-1903), c. 1900
 graphite and colored pencil, (dimensions unknown)
 Image location: New York, The Museum of Modern Art 125
- 90b. *Head with Horns*
 Paul Gauguin (1848-1903), 1895–97
 wood with traces of paint, (dimensions unknown);
Tongan Young Woman Living in Fiji
 (photographer unknown), c. 1900
 Photograph, (dimensions unknown)
 Image location: New York, The Museum of Modern Art; Los Angeles, The J. Paul Getty Museum; London, The British Museum 125

91. *Sadanobu-ko yoru kyuchu ni kai o osoreshimu no zu (Sadanobu Threatening a Demon in the Palace at Night)*, *Shinkei sanjurokkaisen (New forms of thirty-six ghosts)*
Tsukioka Yoshitoshi (1839-1892), 1889
woodblock print on paper, 36.8 x 25.2 cm
Image location: Indiana, Indianapolis Museum of Art 126
92. *Spectres (Ghosts)* [Musée du Louvre title], *Noa Noa* (sketchbook)
Paul Gauguin (1848-1903), c. 1890s
page from a sketchbook
Image location: Paris, Département des Arts graphiques, Musée du Louvre [RF 7259, 60] 127
- 93a. *Notes manuscrites (Handwritten notes)* [Musée du Louvre title], *Noa Noa* (sketchbook)
Paul Gauguin (1848-1903)
c. 1890s
pages from a sketchbook
Image location: Paris, Département des Arts graphiques, Musée du Louvre [RF 7259, 230; RF 7259.71] 128
- 93b. *Personnage japonais (Japanese character)* [Musée du Louvre title], *Noa Noa* (sketchbook)
as above 128
- 94a. *Notes manuscrites et copies d'après Delacroix (Handwritten notes and copies after Delacroix)*
[Musée du Louvre title], *Noa Noa* (sketchbook)
Paul Gauguin (1848-1903), c. 1890s
page from a sketchbook
Image location: Paris, Département des Arts graphiques, Musée du Louvre [RF 7259, 235] 129
- 94b. *Fujiwara no Sanekata and Sparrows, Manga*
Katsushika Hokusai (1760-1849), 1815-1865
20.3 x 14 cm, woodcut on paper
Image location: New York, Ronin Gallery 129
- 95a. *Noa Noa*
Paul Gauguin (1848-1903), c. 1890s
front cover from a sketchbook
Image location: Paris, Département des Arts graphiques, Musée du Louvre [RF 7259, 1] 130
- 95b. *Nanso Satomi hakken den*
Kyokutei Bakin, Yanagawa Shigenobu, et al., 1814 to 1841
front cover, 22.8 x 16 cm
Image location Japan, National Diet Library 130
96. *Portrait of Jacob Meyer de Haan*
Paul Gauguin (1848-1903), 1889
oil on wood, 79.6 x 51.7 cm
Image location: New York, Museum of Modern Art 131

97. *Oviri*, (front & back)
 Paul Gauguin (1848-1903), c. 1894
 Medium: Stoneware, 75 x 19 x 27 cm
 Image location: Paris, © RMN-Grand Palais (Musée d'Orsay) 132
98. *Manao Tupapau (The Spirit of the Dead Watches)*
 Paul Gauguin (1848 - 1903), 1892
 oil on canvas, 73 x 92 cm
 Image location: New York, Albright-Knox Art Gallery 133
99. Poster for Bing Exhibition in London (1889)
 Frank Brangwyn (1867-1956), 1899 (printed)
 colour lithograph on paper, (dimensions unknown)
 Image location: London, Victoria & Albert Museum [E.450-1965] 134
100. Belt buckle, with lily pads and blossom
 Henri Vever, gold, enamel and diamond
 c.1900, (dimensions unknown)
 Image location: Boston, Museum of Fine Arts Boston 135
- 101a. *Assyrienne* (comb)
 Henri and Paul Vever; Eugène Grasset (1845-1917), c.1900
 carved tortoiseshell, gold, enamel and sapphires, (dimensions unknown) 136
- 101b. *Apparitions* (brooch)
 Henri and Paul Vever; Eugène Grasset (1845-1917), 1900
 Repoussé gold; translucent and opaque cloisonné enamel; ivory; topaz cabochons, 6.2x3.9x1.3
 cm
 Image location: Paris, © RMN-Grand Palais (Musée d'Orsay) 136
102. *Un Autre Monde*, (frontispiece)
 J. J. Grandville (1803-1847), 1843-1844
 Image location: Paris, Bibliothèque Nationale 137
103. *Vase La Carpe*
 Émile Gallé (1846-1904), 1878
 Glass, (dimensions unknown)
 Image location: Paris, © Les Arts Décoratifs [A 86] 138
104. *Saito Oniwakamaru, "Young Devil Child" (Benkei) fighting the giant carp in the waterfall of Bishamon ga taki, Ikkai zuihitsu (Essays by Yoshitoshi)*
 Tsukioka Yoshitoshi (1839-1892), c.1872
 woodblock print on paper, dimensions unknown
 Image location: Ann Arbor, MI, Fuji Arts 139
105. *Gyoran Kannon*
 Katsushika Hokusai (1760-1849), 1849
 ink and paper, 63.5 x 36.2 cm
 Image location: London, © Trustees of the British Museum [1937,0710,0.296] 140

106. *Carp Vase*
Eugène Rousseau (1827-1891), 1878-1884
layered and engraved glass, (dimensions unknown)
Image location: Baltimore, The Walters Art Museum [47.384] 141
107. *Les Hommes Noirs (The Dark Men)*
Émile Gallé (1846-1904) & Victor Prouvé (1858-1943), c.1900
blown and cased glass, cut, acid-etched, engraved, polished, applied silver stain, 38.1 x 32.1 cm
Image location: Corning, The Corning Museum of Glass [2011.3.1] 142
108. *Gaki Zoshi (Stories of Hungry Ghosts)*
(artist unknown), 12th century
emaki, 26.8 x 138.4 cm
Image location: Kyoto, Kyoto National Museum [AK229] 143
- 109a. *Gaki Zoshi (Stories of Hungry Ghosts)*, (detail)
(artist unknown), 12th century
Emaki, 26.8 x 138.4 cm
Image location: Corning, The Corning Museum of Glass [2011.3.1] 144
- 109b. *Les Hommes Noirs (The Dark Men)*
(detail), Émile Gallé (1846-1904) & Victor Prouvé (1858-1943), c.1900
blown and cased glass, cut, acid-etched, engraved, polished, applied silver stain, 38.1 x 32.1 cm
Image location: Kyoto, Kyoto National Museum [AK229] 144
- 110a. *Vase with face*
Pierre-Adrien Dalpayrat (1844-1910), Alphonse Voisin-Delacroix (1857-1893) (maker), 1892-93
stoneware, 64.8 x 42.9 x 40.6 cm
Image location: New York, The Metropolitan Museum of Art 145
- 110b. *The Opera of the Sea*
Margaret Macdonald Mackintosh (1864-1933), c. 1902
inlaid gesso panel
Image location: London, © The Fine Art Society [FAS71068] 145
- 110c. *The Opera of the Sea*
Margaret Macdonald Mackintosh (1864-1933), c. 1910
oil and tempera on sized paper, 144 x 160 cm
Image location: New York, Museum of Modern Art [SC510.1953] 145
111. *O Grave, where is thy Victory?*
Jan Theodore Toorop (1858 - 1928), 1892
drawing, 60.4 x 75.3 cm
Image location: Otterlo, Rijksmuseum Kroller-Muller [Image URL: RP-T-1960-243] 146
112. *The Three Fiancées*
Jan Theodore Toorop (1858 - 1928), 1893
drawing on paper, 78 x 98 cm
Image location: Otterlo, Krölller-Müller Mseum 147

113. *Fatality*
 Jan Theodore Toorop (1858-1928), 1893
 chalk and pencil on paper, 60 x 75 cm
 Image location: Otterlo, Rijksmuseum Kroller-Muller [JHG179920] 148
114. *Shipwreck*
 Jan Theodore Toorop (1858-1928), 1895
 ink and coloured chalk on paper, 17.2 x 28.5 cm
 Image location: Private Collection 149
115. *Satan's Treasures*
 Jean Delville (1867-1953), 1895
 oil on canvas, 338 x 368 cm
 Image location: Brussels, Musées Royaux des Beaux Arts Belgium 150
116. *The Dream of the Fisherman's Wife*
 Katsushika Hokusai (1760-1849), c. 1814
 woodcut print on paper,
 Image location: a. Brussels, Musées Royaux des Beaux Arts Belgium 150
117. *Still life with Chinoiseries*
 James Ensor, 1907
 oil on canvas, 61.5 x 75.2 cm
 Image location: Deurie, Belgium, Museum Dhondt-Dhaenens 151
118. *My Aunt Asleep Dreaming of Monsters*
 James Ensor (1860-1949), c. 1890.
 pencil, conté crayon & coloured pencil on paper, 21.9 x 30 cm
 Image location: Brussels, Royal Museum of Fine Arts 152
- 119a. *The Haunted Furniture*
 James Ensor (1860-1949), 1888
 etching, 12.4 x 17 cm
 Image location: Antwerpen, Museum Plantin-Moretus, Print Room [PK.MP.01225] 153
- 119b. *The Haunted Fireplace*
 James Ensor (1860-1949), 1888
 crayon and coloured pencil on panel , 24 x 16 cm
 Image location: Private collection; previously exhibited: New York, Museum of Modern Art 153
120. *Squelette regardant les chinoiseries (Skeleton Looking at Chinoiseries)*
 James Ensor (1860-1949), 1885
 oil on canvas, 61 x 101 cm
 Image location: Museum: Ghent, Museum of Fine Arts Ghent [1995-A] 154
- 121a. *Chinoiserie een, oude vrouw (Chinoiserie an old woman)*
 James Ensor (1860-1949), c.1896
 tekening (drawing), 17.5 x 22.3 cm
 Image location: Canberra, National Gallery of Australia [NGA 96.612] 155

- 121b. *Kiyohime Hidaka-gawa ni jitai to naru zu (Kiyome Changing into a Serpent at Hidaka River), Shinkei sanjurokkaisen (New forms of thirty-six ghosts)*
 Tsukioka Yoshitoshi (1839-1892), 1890
 woodblock print on paper, 36 x 24.6 cm
 Image location: Antwerp, Museum: Royal Museum of Fine Arts Antwerp [2710/9] 155
122. *Chinoiserie, een demon (Chinoiserie, a demon)*
 James Ensor (1860-1949), 1885
 tekening (drawing), 17.3 x 22.3 cm
 Image location: Antwerp, Royal Museum of Fine Arts Antwerp [2710/4] 156
- 123a. *Mirror with Skeleton*
 James Ensor (1860-1949), 1890
 (details unknown)
 Image location: Stevenson, 1983: 15 156
- 123b. *Jigoku-dayu's reflection*
 Yoshitoshi, 1882
 woodblock print on paper, (dimensions unknown) 156
124. *Pierrot and Skeleton in a Yellow Robe*
 James Ensor (1860-1949), 1893
 schilderij (painting), 48 x 38 cm
 Image location: Ghent, Museum of Fine Arts Ghent [2007-B] 157
- 125a. *Oni masks*
 From the collection of Gillot
 (details unknown) 159
- 125b. *Masks from the Estste of James Ensor*
 James Ensor (1860-1949)
 (details unknwon)
 Image location: The Hague, Gemeente Museum 159
126. *The Sirens*
 Gustave Klimt (1862-1918), 1889
 oil on canvas, 82 x 52cm
 Image location: Vienna, Zentralsparkasse 160
127. *The Scream of Nature*
 Edvard Munch, 1893
 oil, tempera & crayon on cardboard, 91 x 73.5 cm
 Image location: Oslo, National Gallery 161

Plate 1.
Sara-yashiki,
Hyaku Monogatari

Katsushika Hokusai (1760-1849)

c. 1830

woodblock print on paper

(dimensions unknown)



Image location: London, © Trustees of the British Museum

Plate 2.
Shunen (Implacable Malevolence),
Hyaku Monogatari

Katsushika Hokusai (1760-1849)
c. 1830
woodblock print on paper
(dimensions unknown)



Image location: London, © Trustees of the British Museum

Plate 3a.
Oiwa-san,
Hyaku Monogatari

Katsushika Hokusai (1760-1849)
c. 1830
woodblock print on paper
(dimensions unknown)

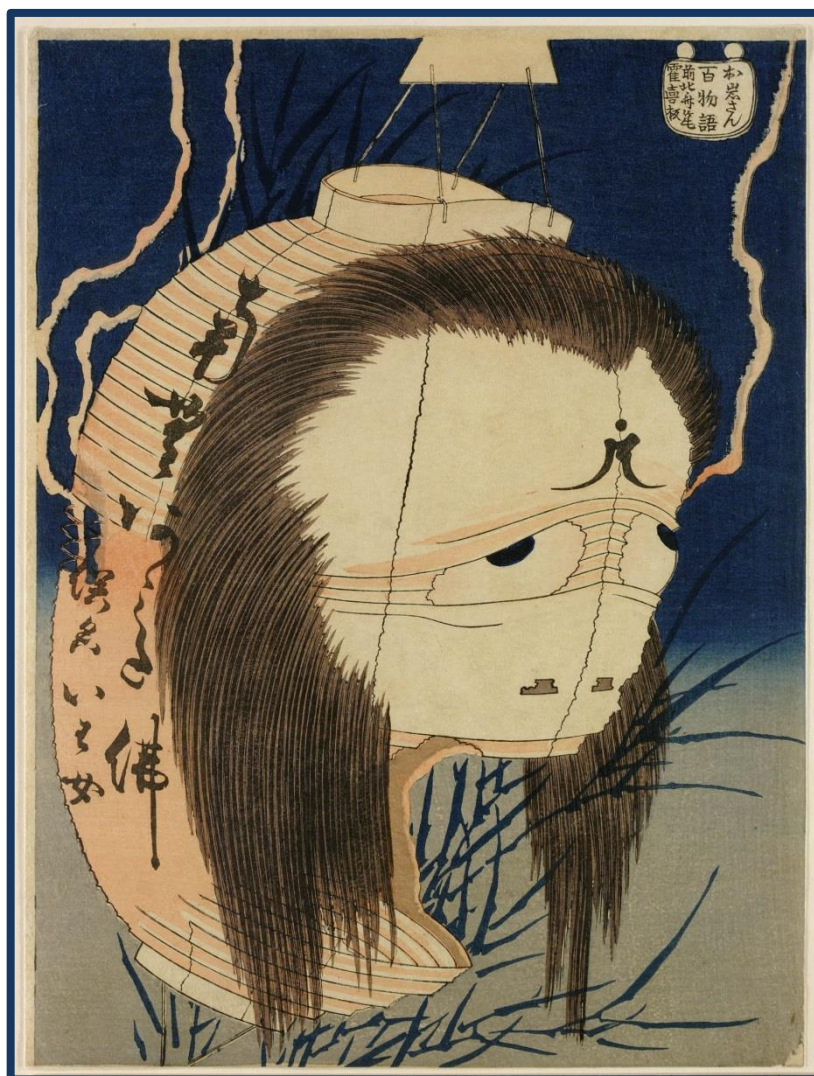


Image location: London, © Trustees of the British Museum

Plate 3b.

The Spirit of Oiwa

Utagawa Kuniyoshi (1797-1868)

1847-1848

woodblock print on paper

(dimensions unknown)



Image location: Oxford, © Ashmolean Museum, University of Oxford; this item is from Eastern Art Online: Yousef Jameel Centre for Islamic and Asian Art, jameelcentre.ashmolean.org, Ashmolean Museum, University of Oxford [EA1971.61]

Plate 4a.

Illustration of an *akashita*,
Hyakkai-zukan (*The Illustrated Volume of 100 Demons*)

Sawaki Suushi

1737

emaki (picture scroll)

(dimensions unknown)



Image location: Kyoto, International Research Center for Japanese Studies

Plate 4b.

Illustration of a *hyōsube* and a *nure-onna*

Hyakkai-zukan (*The Illustrated Volume of 100 Demons*)

Sawaki Suushi

1737

emaki (picture scroll)

(dimensions unknown)



Image location: Kyoto, International Research Center for Japanese Studies

Plate 4c.

Illustration of a *yamawaro*

Hyakkai-zukan (*The Illustrated Volume of 100 Demons*)

Sawaki Suushi

1737

emaki (picture scroll)

(dimensions unknown)



Image location: Kyoto, International Research Center for Japanese Studies

Plate 4d.

Illustration of a kami-kiri

Hyakkai-zukan (The Illustrated Volume of 100 Demons)

Sawaki Suushi

1737

emaki (picture scroll)

(dimensions unknown)



Image location: Kyoto, International Research Center for Japanese Studies

Plate 4e.

Illustration of an *otoroshi*

Hyakkai-zukan (*The Illustrated Volume of 100 Demons*)

Sawaki Suushi

1737

emaki (picture scroll)

(dimensions unknown)



Image location: Kyoto, International Research Center for Japanese Studies

Plate 4f.

Illustration of a *rokuro-kubi*

Hyakkai-zukan (*The Illustrated Volume of 100 Demons*)

Sawaki Suushi

1737

emaki (picture scroll)

(dimensions unknown)



Image location: Kyoto, International Research Center for Japanese Studies

Plate 4g.

Illustration of a *yama-uba*

Hyakkai-zukan (*The Illustrated Volume of 100 Demons*)

Sawaki Suushi

1737

emaki (picture scroll)

(dimensions unknown)



Image location: Kyoto, International Research Center for Japanese Studies

Plate 4h.

Illustration of a *yūrei*

Hyakkai-zukan (*The Illustrated Volume of 100 Demons*)

Sawaki Suushi

1737

emaki (picture scroll)

(dimensions unknown)



Image location: Kyoto, International Research Center for Japanese Studies

Plate 5a.

The Taira Ghosts Attacking Yoshitsune's Ship

Utagawa Kuniyoshi (1797-1868)

1843-1845

woodcut on paper

32.5 x 67.9 cm



Image location: Oxford, © Ashmolean Museum, University of Oxford; This item is from Eastern Art Online: Yousef Jameel Centre for Islamic and Asian Art, jameelcentre.ashmolean.org, Ashmolean Museum, University of Oxford [EA1971.161].

Plate 5b.

The Taira Ghosts Attacking Yoshitsune's Ship
(left panel)

Utagawa Kuniyoshi (1797-1868)

1843-1845

woodcut on paper

32.3 x 25.5 cm



Image location: Oxford, © Ashmolean Museum, University of Oxford; This item is from Eastern Art Online: Yousef Jameel Centre for Islamic and Asian Art, jameelcentre.ashmolean.org, Ashmolean Museum, University of Oxford [EA1971.161.c].

Plate 5c.

The Taira Ghosts Attacking Yoshitsune's Ship
(middle panel)

Utagawa Kuniyoshi (1797-1868)

1843-1845

woodcut on paper

32.3 x 25.5 cm



Image location: Oxford, © Ashmolean Museum, University of Oxford; This item is from Eastern Art Online: Yousef Jameel Centre for Islamic and Asian Art, jameelcentre.ashmolean.org, Ashmolean Museum, University of Oxford [EA1971.161.b].

Plate 5d.

The Taira Ghosts Attacking Yoshitsune's Ship
(right panel)

Utagawa Kuniyoshi (1797-1868)

1843-1845

woodcut on paper

(dimensions unknown)



Image location: Oxford, © Ashmolean Museum, University of Oxford; This item is from Eastern Art Online: Yousef Jameel Centre for Islamic and Asian Art, jameelcentre.ashmolean.org, Ashmolean Museum, University of Oxford [EA1971.161.a].

Plate 6a.

Minamoto Raiko and the 'Earth Spider'

(V&A title: *The Spider Monster Creating Monsters in the Mansion of Minamoto no Yorimitsu*)

Utagawa Kuniyoshi (1797-1861)

1843

woodcut on paper

34.6 cm x 72.7 cm



Image location: London, © Victoria and Albert Museum [E.10535-1886]

Plate 6b.

Minamoto Raiko and the 'Earth Spider'

(V&A title: *The Spider Monster Creating Monsters in the Mansion of Minamoto no Yorimitsu*)

(left panel)

Utagawa Kuniyoshi (1797-1861)

1843

woodcut on paper

(dimensions unknown)



Image location: London, © Victoria and Albert Museum [E.10535-1886]

Plate 6c.

Minamoto Raiko and the 'Earth Spider'

(V&A title: *The Spider Monster Creating Monsters in the Mansion of Minamoto no Yorimitsu*)

(middle panel)

Utagawa Kuniyoshi (1797-1861)

1843

woodcut on paper

(dimensions unknown)



Image location: London, © Victoria and Albert Museum [E.10535-1886]

Plate 6d.

Minamoto Raiko and the 'Earth Spider'

(V&A title: *The Spider Monster Creating Monsters in the Mansion of Minamoto no Yorimitsu*)

(right panel)

Utagawa Kuniyoshi (1797-1861)

1843

woodblock print on paper

(dimensions unknown)



Image location: London, © Victoria and Albert Museum [E.10535-1886]

Plate 7.

The Web of Government

Ukita Ikkei (1795-1859)

Mid-19th century

hanging scroll on paper, ink, colour and gold wash

168 x 58.9 cm

DEMONS AND PROTEST IN LATE TOKUGAWA JAPAN

23



FIG. 15. *The Web of Government*. By Ukita Ikkei (1795-1859). Hanging scroll, ink, gold color, and gold wash on paper. 168 x 58.9 cm. Koshimono Kōichi Collection, Hyōgo.

Image location: Hyōgo, Koshimono Kōichi Coll.

Plate 8.

Inada Kyûzô Shinsuke murders the kitchenmaid suspended from a rope, Eimei nijūhasshūko (Twenty-eight Famous Murders with Poems)

Tsukioka Yoshitoshi (1839-1892)

c. 1867

woodblock print on paper

34.9 x 24.1 cm



Image location: San Francisco, Fine Arts Museum of San Francisco

Plate 9.

The Hag of Adachigahara

Tsukioka Yoshitoshi (1839-1892)

1885

ōban

38 x 26 cm



Image location: Kyoto, International Research Center for Japanese Studies

Plate 10.
Kohada Koheiji,
Hyaku Monogatari

Katsushika Hokusai (1760-1849)

c. 1830

woodblock print on paper

(dimensions unknown)



Image location: London, © Trustees of the British Museum

Plate 11.

Neue Zeyttung auß der Insel Japonien

Michael Manger (1570-1603)

1586

(dimensions unknown)



Image caption: "Neue Zeyttung auß der Insel Japonien: A broadside on the arrival of four Japanese ambassadors in Milan; with a hand-coloured woodcut depicting four young men and one their Jesuit teacher Meschita in Western attire, and with a title and text in letterpress. (Augsburg, Manger: 1586)"

Image location: London, © Trustees of the British Museum

Plate 12.
The Scruple

William Sharp (1749-1824)
1781
(dimensions unknown)



Image location: London, © Trustees of the British Museum

Plate 13.

Yorimitsu and the Earth Spider

Katsushika Hokusai (1760-1849)

c. 1818

(media and dimensions unknown)

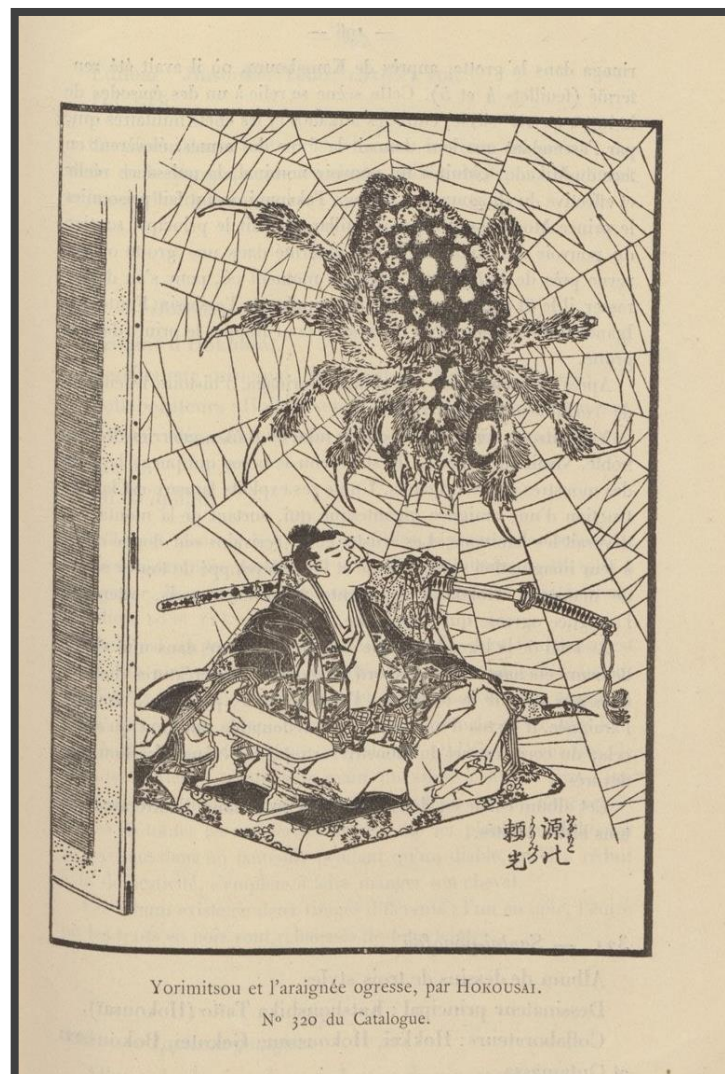


Image location: Duret, 1900: 194-195; pl. 320

Plate 14.

Kouaidan hiyak'ki dzuyé (Apparitions of a Hundred Monsters)

Katsukawa Shunyei (1762-1819)

woodblock print on paper

(details unknown)

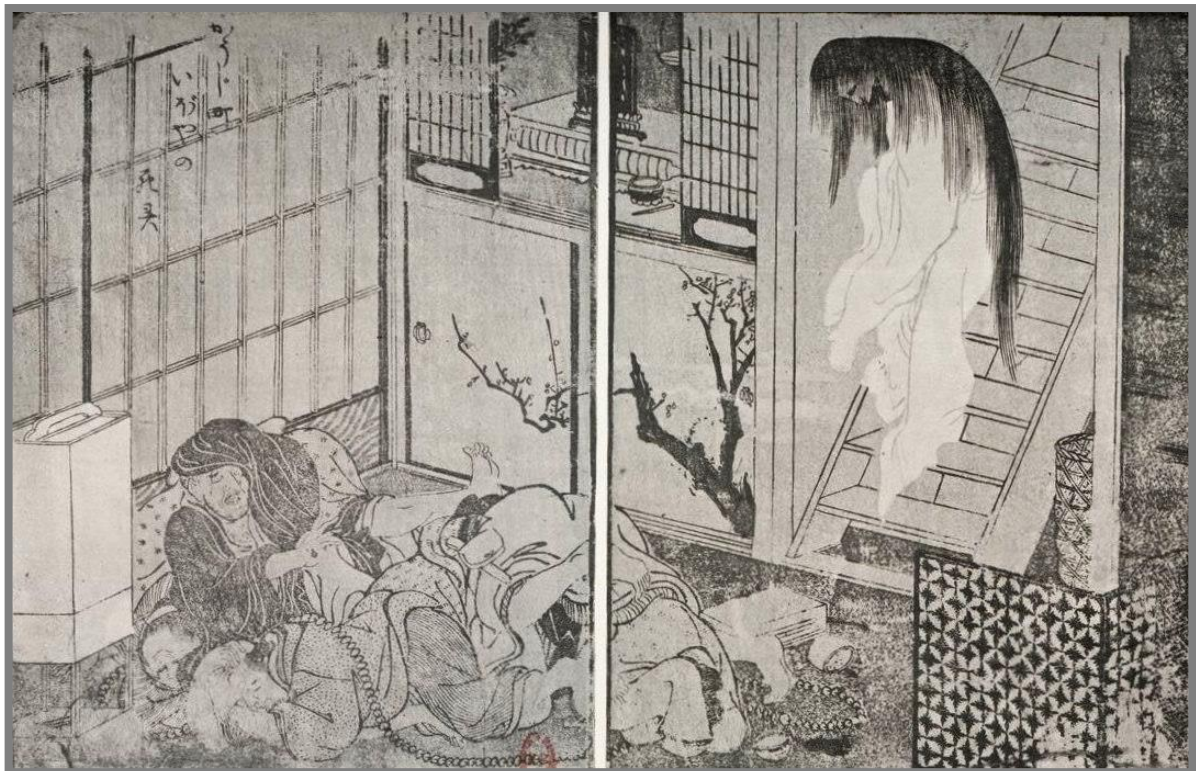


Image location: Paris, Bibliothèque Nationale

Plate 15.

The Temptation of Buddha

Katsushika Hokusai (1760-1849)
(details unknown)



Image location: Gillot, 1880s: pl. 233

Plate 16.

Apparition of the Courtesan, 1765

Ran'ū (dates unknown)

1765

woodblock print, ink and colour on paper

28x19.4cm



Image citation: Formerly Vever Collection, now Freer Gallery of Art and Arthur M. Sackler Gallery.

Plate 17.

Onoe Matsusuke I playing the role of Kohada Koheiji

Utagawa Toyokuni (1769-1825)

1808

Woodblock print on paper

37x25cm



Image citation: Formerly Haviland Collection and exhibited in Paris in 1910. Reproduced in V & I no. 47: xxviii. Then the Henri Vever Collection

Image location: London, © Trustees of the British Museum

Plate 18.

Okamé: Les Amis de l'art japonais dîneront au restaurant Cardinal

One of several invitation cards printed for Société des amis de l'art japonais, 1870-1914

Roche, Pierre (1855-1922)

1908

(details unknown)



Image location: Paris, Bibliothèque Nationale de France, département Estampes et photographie [PET FOL-EF-441 (A,5)]

Plate 19.

Front cover of *Le Japon artistique*

No. 20, December, 1889

No. 30, October, 1890

Siegfried (Samuel) Bing (1838-1905) (editor)

1888-1891

journal page

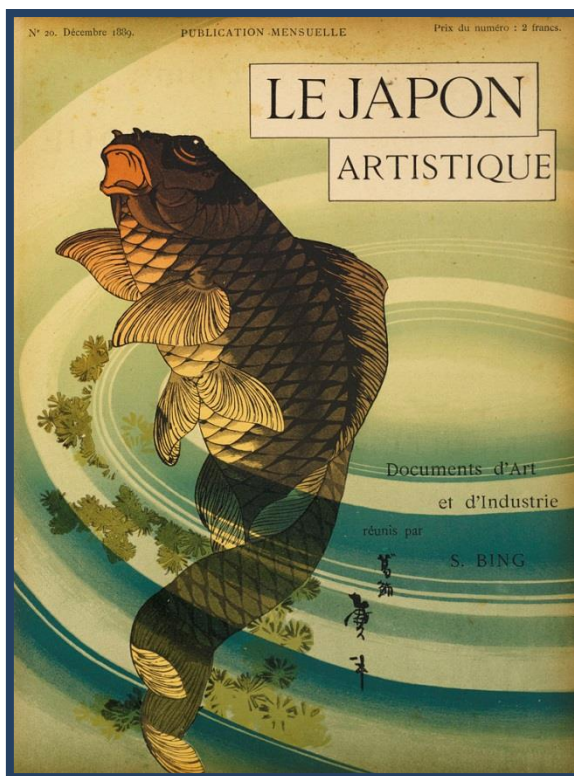


Image location: Digital Library for the Decorative Arts and Material Culture

Plate 20.

Front cover of *Catalogue de l'exposition retrospective de l'art japonais*

Louis Gonse (editor)

1883

catalogue page

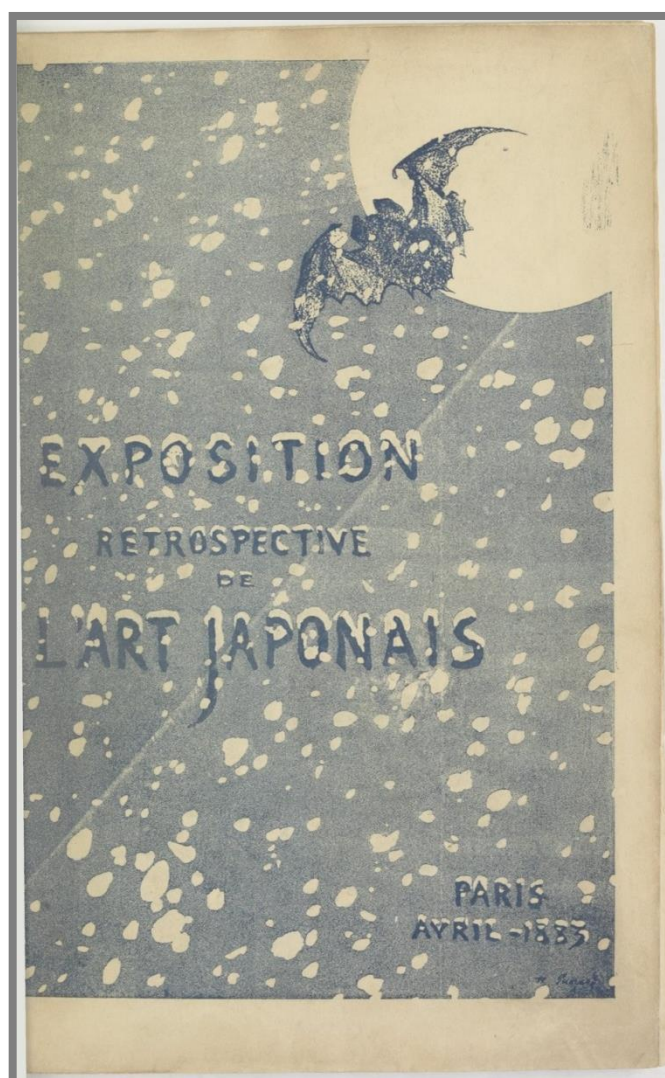


Plate 21

Netsuke representing Futen, The Storm Spirit

(artist unknown)

18th century

wood with inlays

8.3 x 2.9 x 2.5 cm



Image location: Los Angeles County Museum of Art

Plate 22.

Okabe Metamorphosed into a Cat

Utagawa Kunisada

1835

woodcut print on paper

36.7 x 77.4 cm



An imprint of this work is in Monet's collection of Japanese prints at Giverny.

Plate 23.

Amaterasu coming out of the cave

Gyokuei

late 19th century

98 x 2.3 cm

(dimensions unknown) - the Van Gogh catalogue of Japanese prints cites the size of this as 980x23 mm however do you think that is a mistake, surely it should be 980x230 or 98x23 as it is described as a 'small kakemono'?



Image location: van Rappard-Boon et al., 2006: 68, pl. 22

Plate 24.

Okabe,

Tōkaidō gojusan-tsui (Fifty-three pairings along the Tōkaidō Road)

Utagawa Kuniyoshi (1797-1861)

1843-1845

woodblock print on paper

36.1 x 25.6 cm



Image location: London, © The Trustees of the British Museum

Plate 25.

Onoe Baikō as a female ghost holding a baby / Ghost of the Swamp

Utagawa Kunisada

c. 1830

ōban; nishiki-e

38.1 x 26.4 cm



Image location: Amsterdam, Van Gogh Museum

Plate 26.

Kuwana,

Tōkaidō gojusan-tsui (Fifty-three pairings along the Tōkaidō Road)

Utagawa Kuniyoshi (1797-1861)

1843-1845

woodblock print on paper

37.3 x 25.2 cm



Image location: London, © The Trustees of the British Museum

Plate 27.

Nakamura Shikan II as Tadanobu

Shunbaisai Hokuei (d. 1837)

1835

(details unknown)



Image location: London, © Victoria and Albert Museum [E.5016-1886]

Plate 28a.

The Rescue of Minamoto no Tametomo by Goblins

Utagawa Kuniyoshi (1797-1861)

c. 1851

woodblock print on paper

(dimensions unknown)

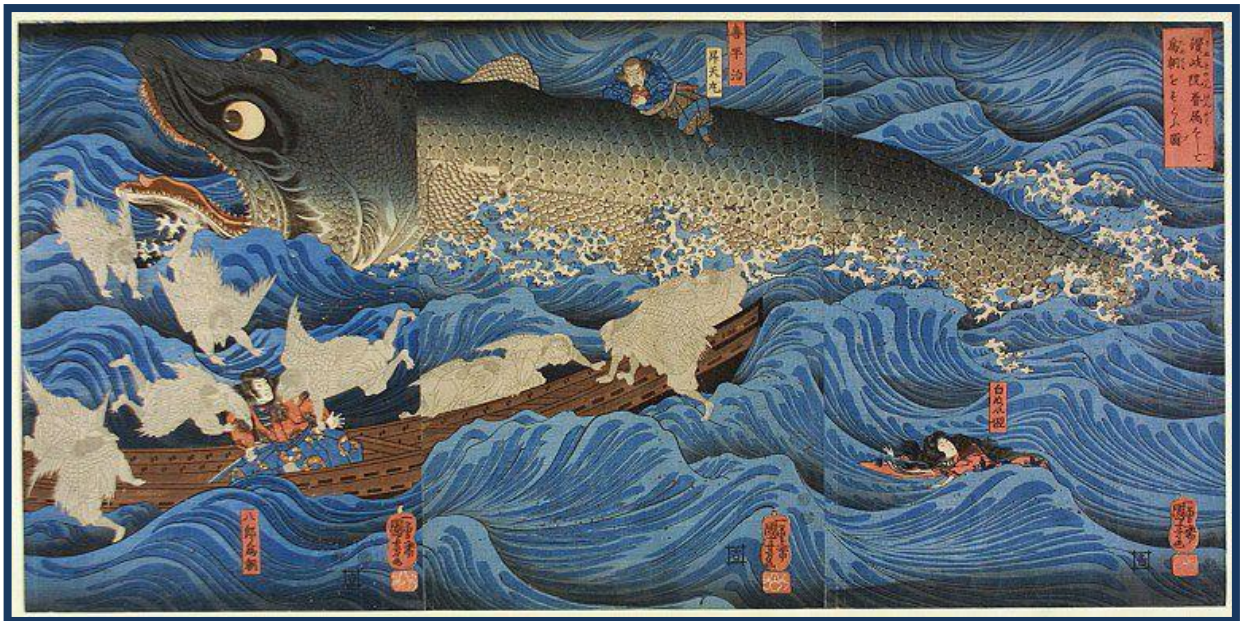


Image location: London, © Victoria and Albert Museum [E.10605-1886]

Plate 28b.

The Rescue of Minamoto no Tametomo by Goblins
(left panel)

Utagawa Kuniyoshi (1797-1861)

c. 1851

woodblock print on paper

(dimensions unknown)



Image location: London, © Victoria and Albert Museum, London [E.10605-1886]

Plate 28c.

The Rescue of Minamoto no Tametomo by Goblins
(middle panel)

Utagawa Kuniyoshi (1797-1861)

c. 1851

woodblock print on paper

(dimensions unknown)

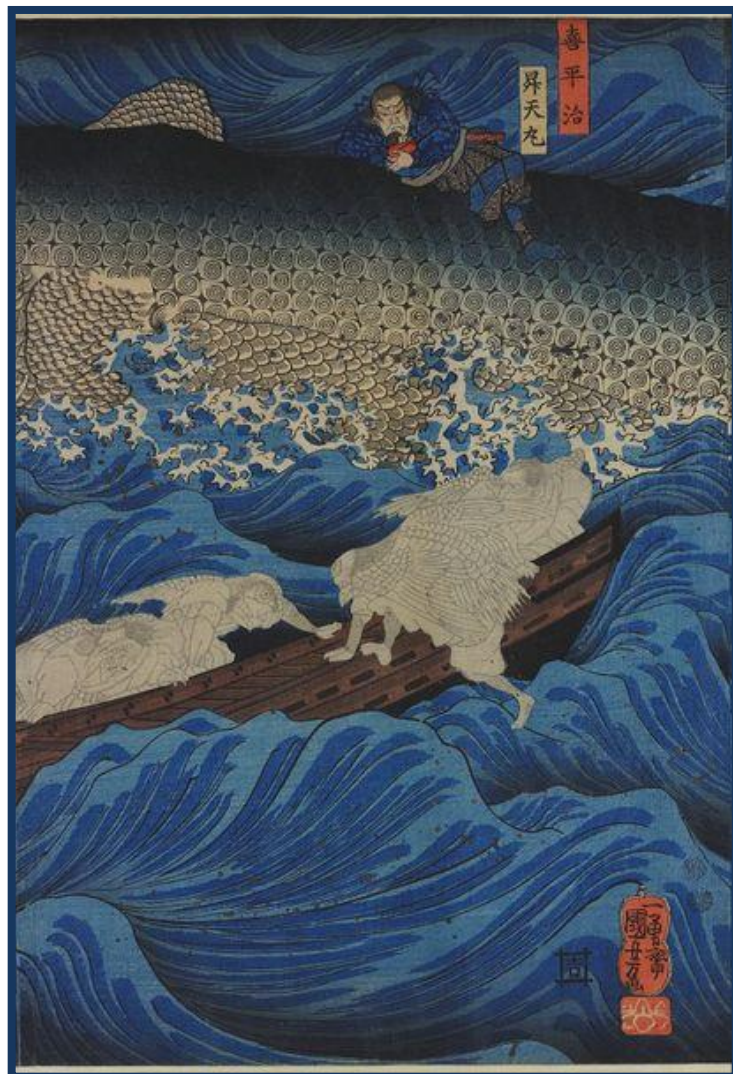


Image location: London, © Victoria and Albert Museum, London [E.10605-1886]

Plate 28d.

The Rescue of Minamoto no Tametomo by Goblins
(right panel)

Utagawa Kuniyoshi (1797-1861)

c. 1851

woodblock print on paper

(dimensions unknown)

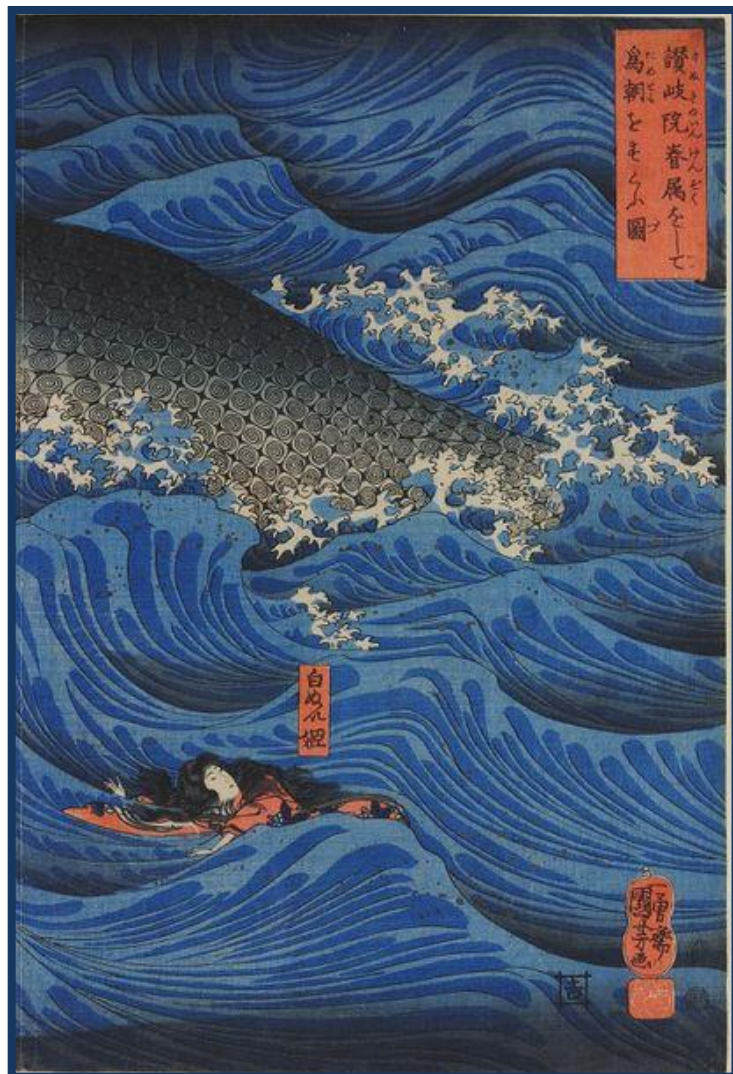


Image location: London, © Victoria and Albert Museum, London [E.10605-1886]

Plate 29a.

*The Giant Octopus and Others; Newly Published Quick Changes:
Two-faced Monsters*

Utagawa Sadahide

1830-1844

Ink and colour on paper

(dimensions unknown)



Image location: London, © Victoria and Albert Museum, London [E.2198-1909]

Plate 29b.

Mouse Monster and Others; Newly Published Quick Changes: Two-faced Monsters

Utagawa Sadahide

1830-1844

Ink and colour on paper

(dimensions unknown)



Image location: London, © Victoria and Albert Museum, London [E.2197-1909]

Plate 29c.

Fox-Genkurô and Others; Newly Published Quick Changes: Two-faced Monsters

Utagawa Sadahide

1830-1844

Ink and colour on paper

(dimensions unknown)



Image location: London, © Victoria and Albert Museum, London [E.2200-1909]

Plate 29e.

Mendicant Monk in Katsushika and Others; Newly Published Quick Changes: Two-faced Monsters

Utagawa Sadahide

1830-1844

Ink and colour on paper

(dimensions unknown)



Image location: London, © Victoria and Albert Museum, London [E.2196-1909]

Plate 30.

*Catalogue of the Valuable Collection of Japanese Colour Prints
The Property of John Stewart Happer, Esq.*

Sotheby, Wilkinson & Hodge

1909

catalogue entry

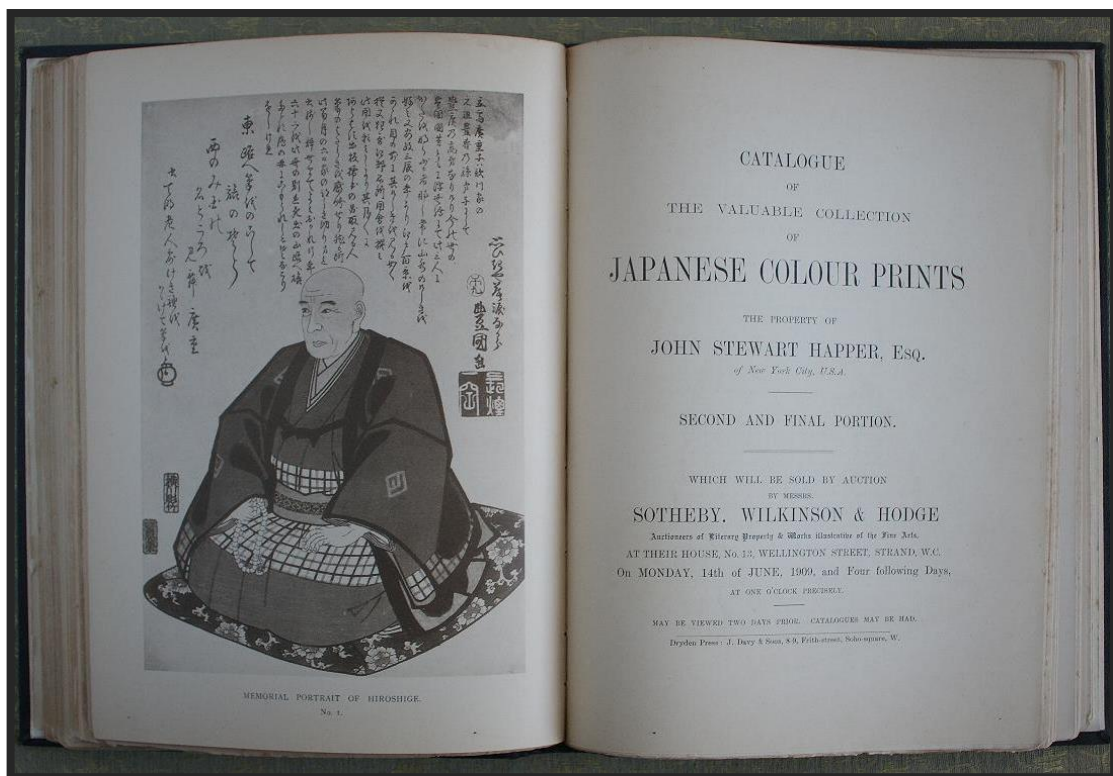


Image location: courtesy of Brian Page Antiques

Plate 31.

Vase

Edward William Godwin (1833-1886); William Watt

c. 1877

Slipware

20.7 x 19 cm



Image location: London, Victoria & Albert Museum [C.2-2008]

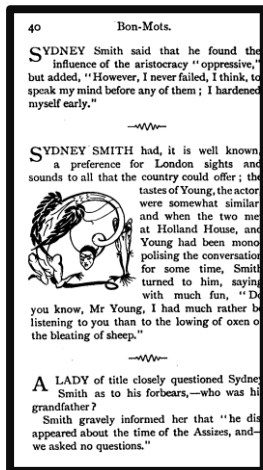
Plate 32.

a-f. Illustrations for *Bon-Mots of Sydney Smith and R. Brinsley Sheridan*

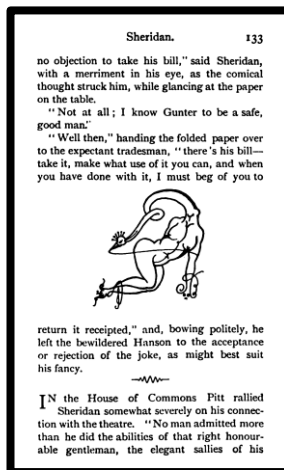
Aubrey Vincent Beardsley (1872-1898)
1893

g. *J'ai baisé ta bouche Iokanaan*
Design for 'The Climax' for Oscar Wilde's 'Salome'

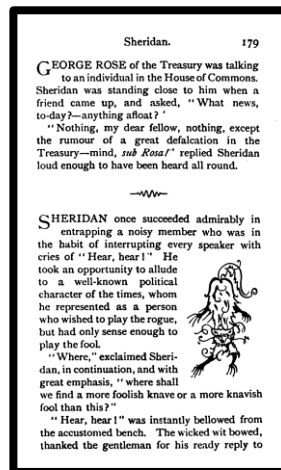
Aubrey Vincent Beardsley (1872-1898)
1893
line block print
22.8 x 12.7 cm



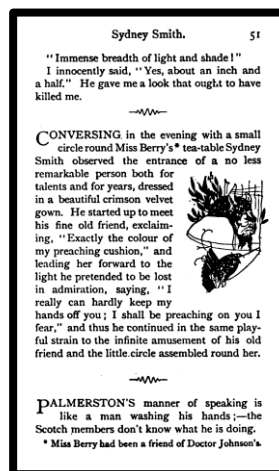
a.



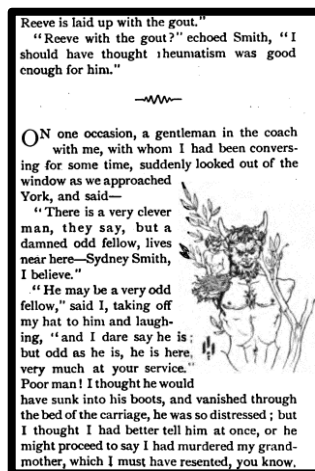
b.



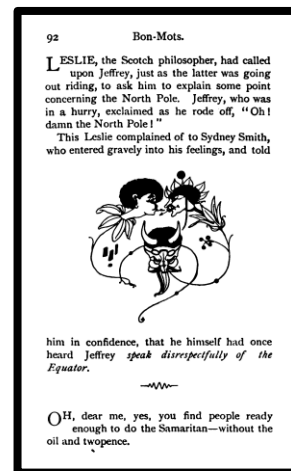
c.



d.



e.



f.



g.

Image location: a-f. Jerrold, 1893: 40; 133; 179; 51; 79; 92; g. London, © Victoria and Albert Museum [E.456-1899]

Plate 33.

Illustration accompanying *The Tongue Cut Sparrow*
Tales of Old Japan

(details unknown)

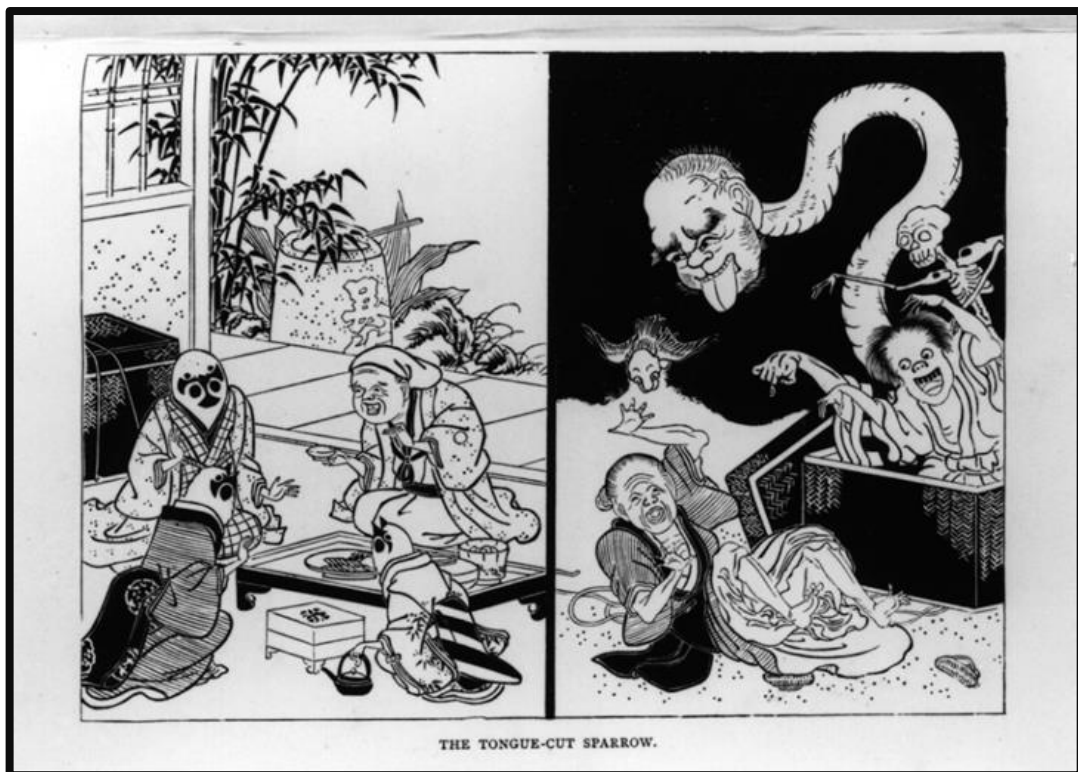
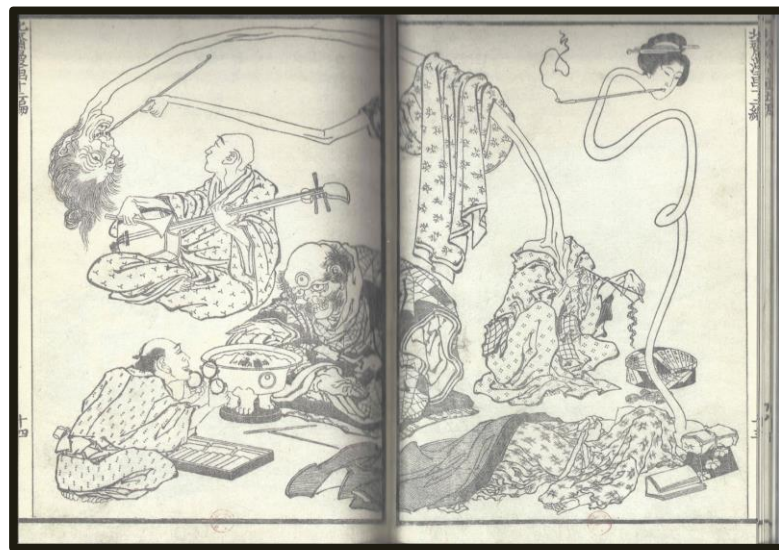


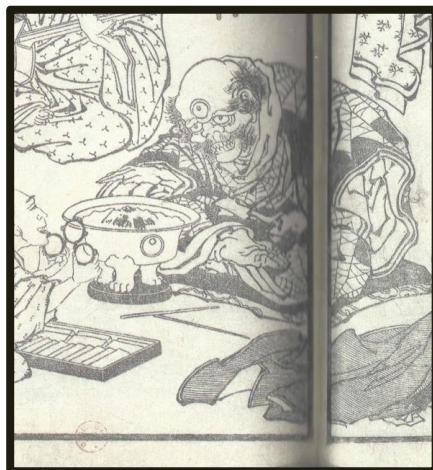
Image location: Mitford, 1871: 250

Plate 34.
Illustration of a *rokuro-kubi*
Hokusai *Manga*

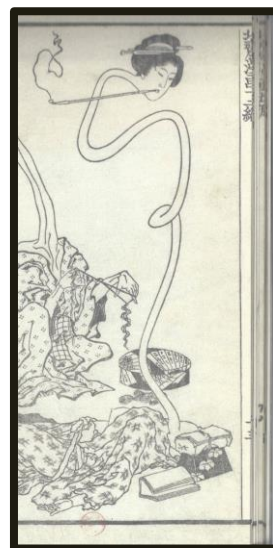
Katsushika Hokusai (1760-1849)
woodcut on paper
(details unknown)



a.



b.



c.

Image location: Bouquillard & Marquet, 2007: 132-133, pl. 2

Plate 35.

Witches' Sabbath

Hans Baldung, called 'Grien'

1510

woodcut

37.5 x 25.4 cm



Image location: London, © Trustees of the British Museum

Plate 36.
The Temptation of Saint Anthony,
Isenheim Altarpiece
(detail)

Matthias Grünewald (c. 1475–80-1528)
c. 1512-1516
oil on panel
(dimensions unknown)



Image location: Colmar france, Musée Unterlinden

Plate 37.

The Ghost of a Flea

William Blake 1757–1827

c. 1819–20

tempera and gold on mahogany

21.4 x 16.2 cm



Image location: London, Tate Britain [N05889]

Plate 38.
Illustrations of *Oni*,
Japanese scroll

(artist unknown)
emaki
(date and dimensions unknown)



Image location: Kyoto, International Research Center for Japanese Studies

Plate 39.

The Nightmare

Henry Fuseli (1741-1825)

1781

oil on canvas

101.6 x 126.7 cm



Image location: Detroit, Detroit Institute of Arts [55.5.]

Plate 40.

The Blue Bower

Dante Gabriel Rossetti (1828 - 1882)

1865

oil on canvas

84 x 70.9 cm



Image location: Bridgemanart.com

Plate 41.

Caprice in Purple and Gold: The Golden Screen

James Abbott McNeil Whistler (1834-1903)

1864

oil on wood panel

50.1 × 68.5 cm

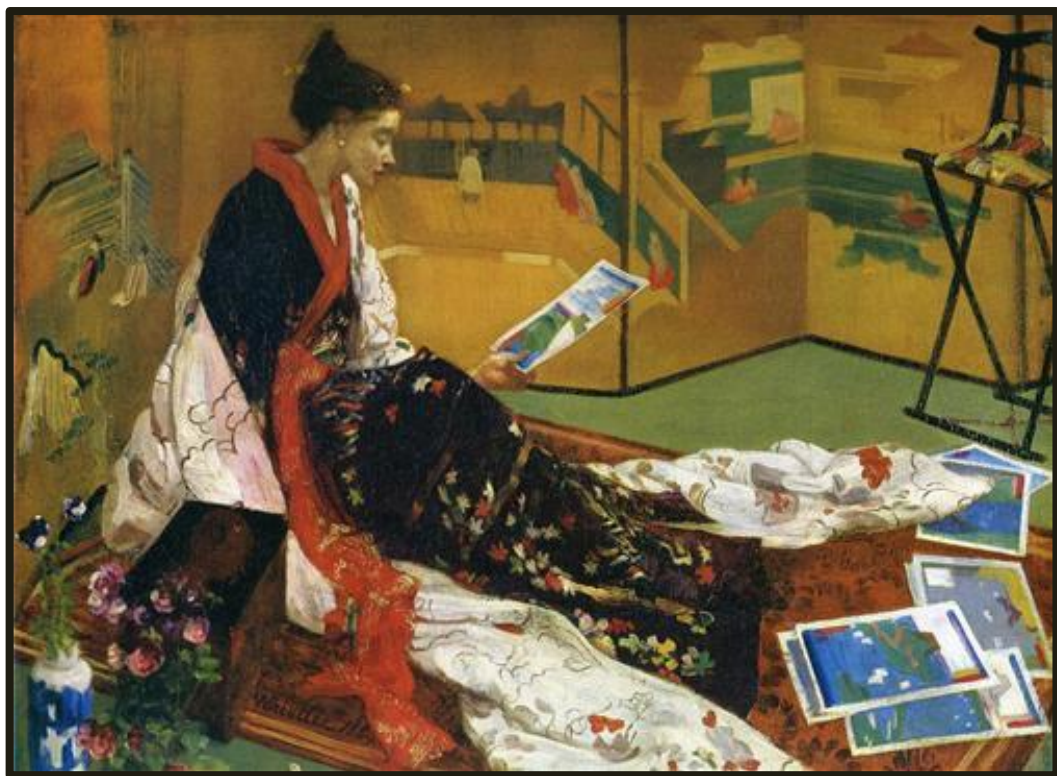


Image location: Freer Gallery of Art and Arthur M. Sackler Gallery [F1904.75a]

Plate 42.

Still-life with Vase with Japanese Samurai Warrior

Odilon Redon (1840-1916)

c. 1905

pastel on paper

228.6 x 184.2 cm

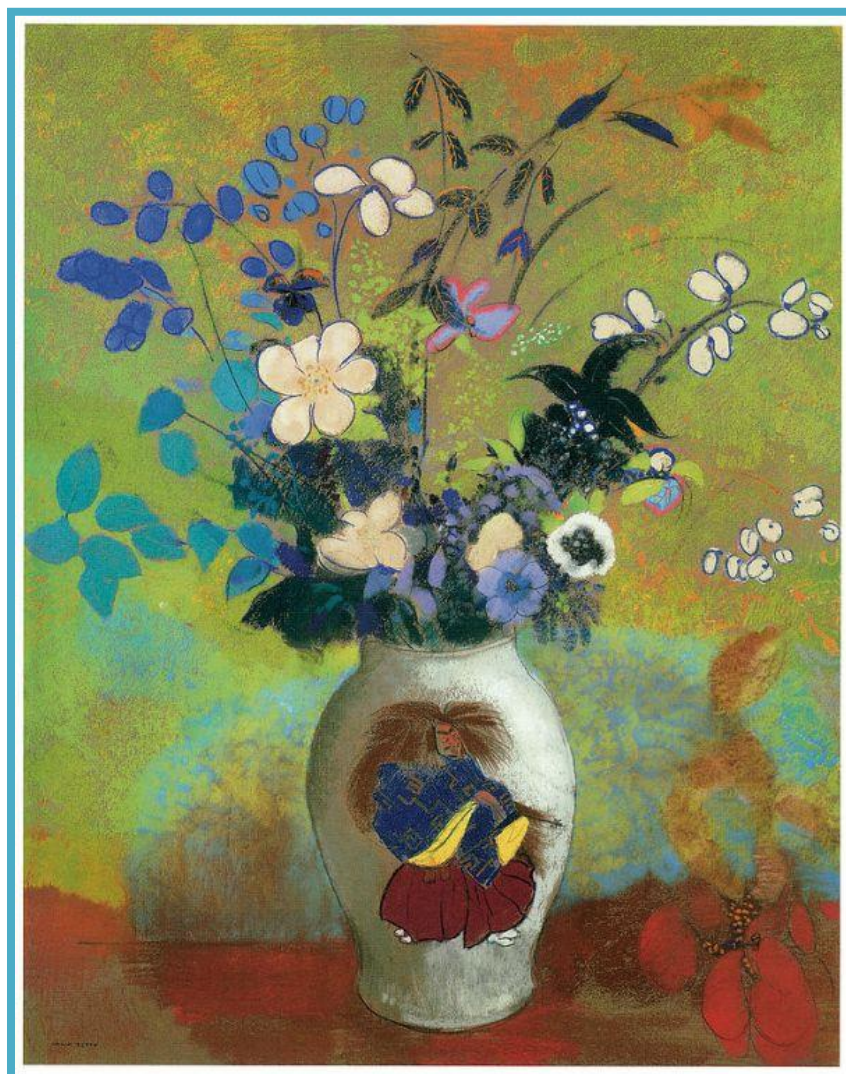


Image location: Oslo, Galleri K

Plate 43.

*The Marsh Flower, A Sad Human Head,
No. 2, Homage to Goya*

Odilon Redon (1840-1916)

1885

lithograph on paper

27.3 x 20.4 cm



Image location: New York, Museum of Modern Art

Plate 44.

*Then There Appears a Singular Being, with the Head of a Man and
the Body of a Fish*

No. 5, The Temptation of St. Anthony

Odilon Redon (1840-1916)

1888

lithograph in black on ivory China paper, laid down on ivory wove paper (chine collé)

27.6 x 17.1 cm

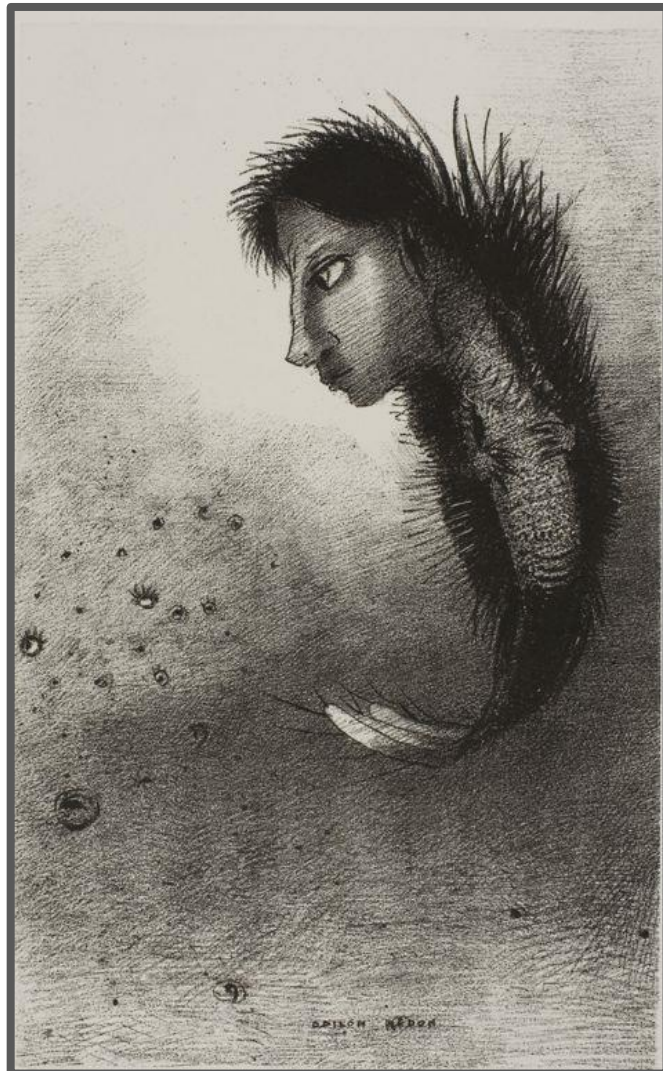


Image location: Art instituted of Chicago, The Stickney Collection [1920.1637]

Plate 45.

Japanese illustration of a *ningyo* (mermaid demon)

(artist unknown)

late Edo period

(medium and dimensions unknown)

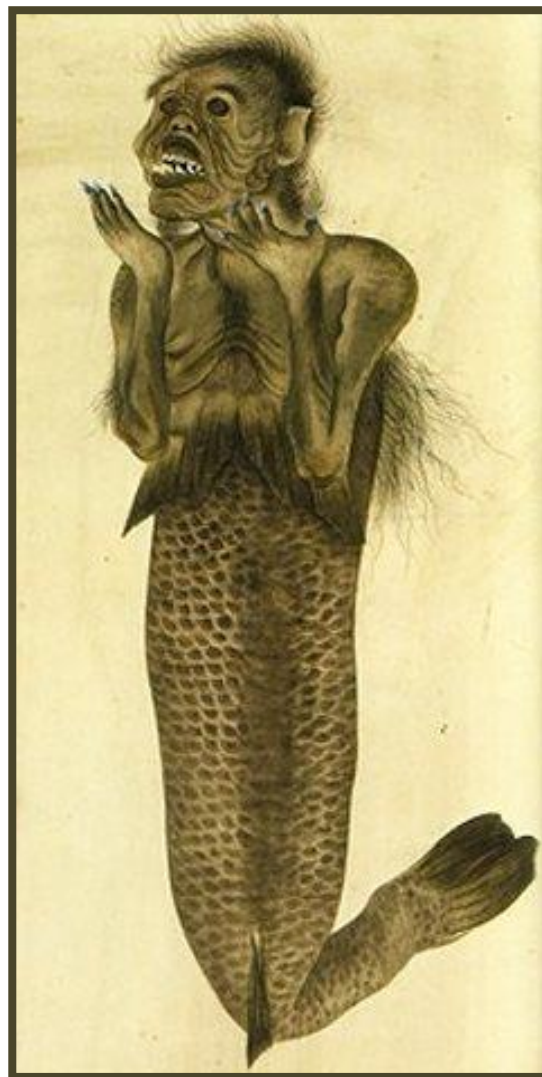


Image location: Collection of Jan Cock Blomhoff 1817-1824; now Leiden: National Museum of Ethnography (Museum Volkenkunde).

Plate 46.
Postcard of a *ningyo* 'mummy'

(artist unknown)
late 19th century
postcard

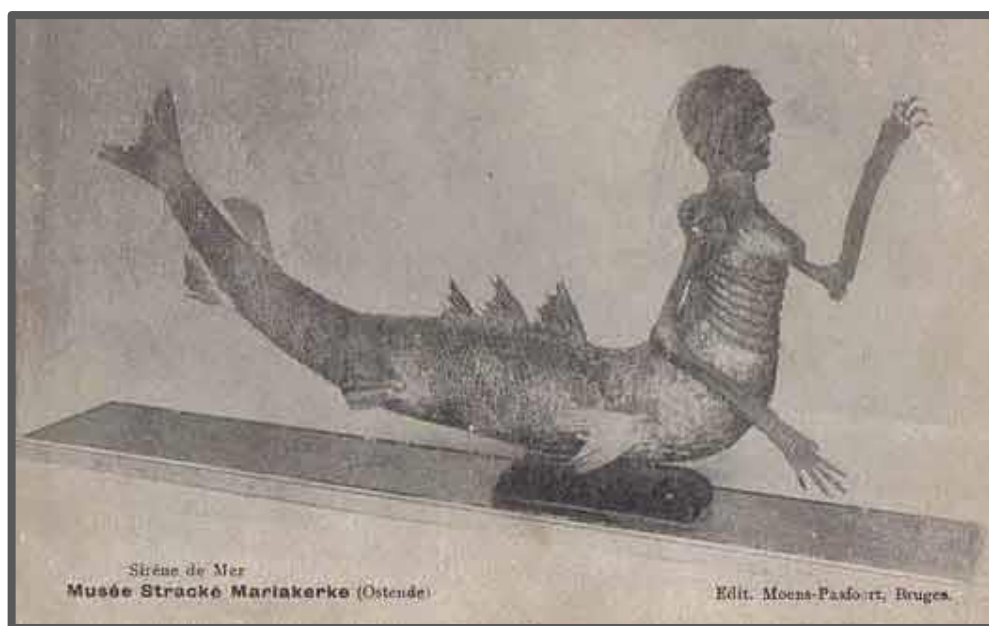


Image location: Ostend, Musée Stracké.

Plate 47.

Japanese *ningyo* 'mummy'

(artist unknown)

late Edo period

fish and animal parts held together with string and paper



Image location: Collection of Jan Cock Blomhoff 1817-1824; now Leiden: National Museum of Ethnography (Museum Volkenkunde).

Plate 48.

Woman wearing a toque and a mermaid's tail

Odilon Redon (1840-1916)

1898

lithograph on paper

23.7 x 22.9 cm

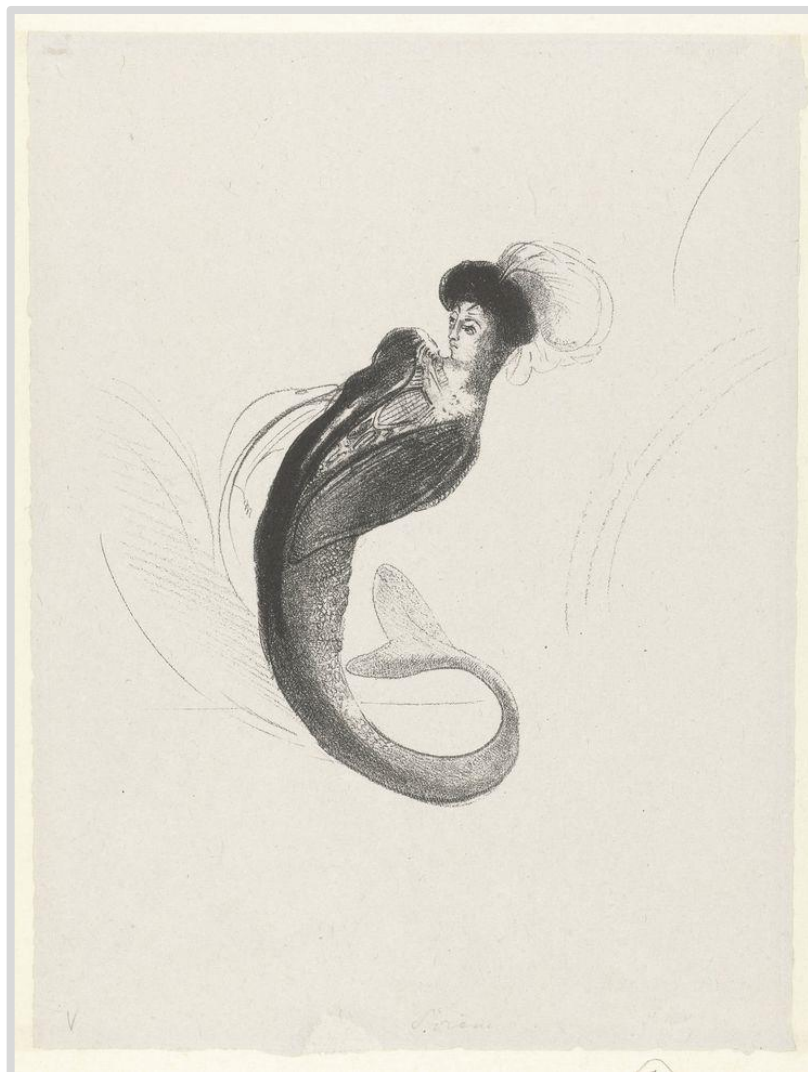


Image location: New York, Museum of Modern Art.

Plate 49.

Skiapod

Odilon Redon (1840-1916)

1892

etching and drypoint

20.1 x 14.9 cm

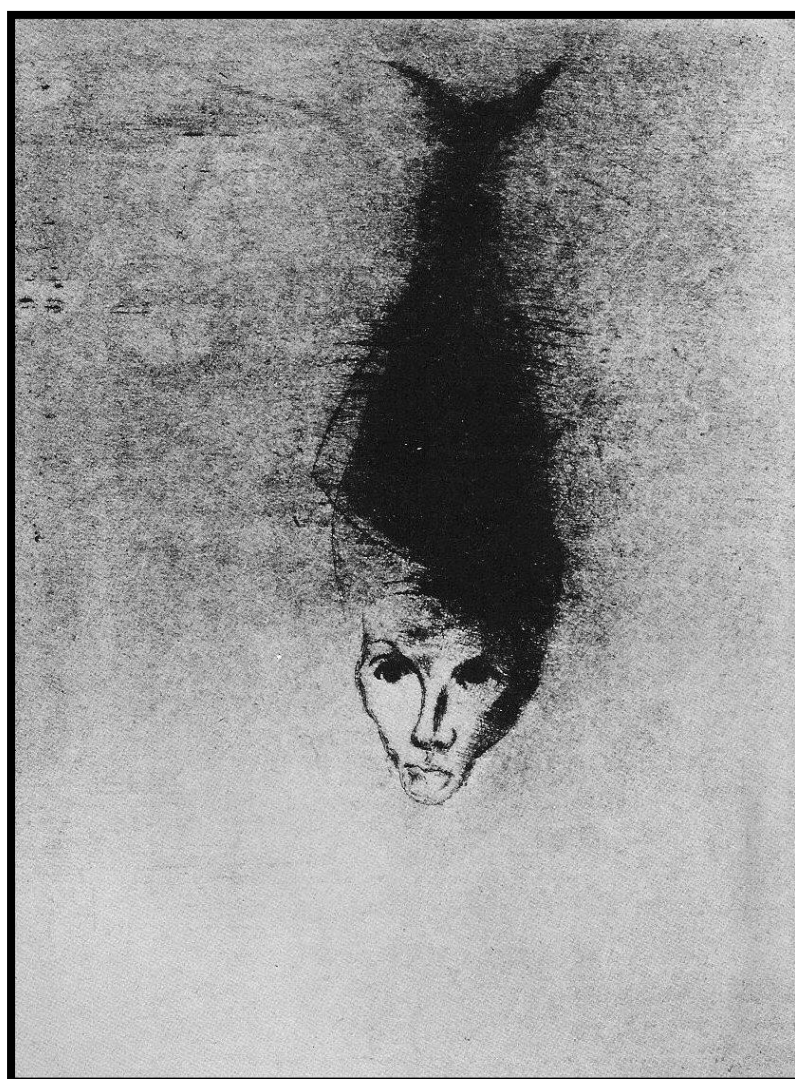


Image location: Paris, Bibliothèque Nationale

Plate 50.

A Death's Head crowned with Roses

No. 6, The Temptation of St. Anthony, first serie

Odilon Redon (1840-1916)

1888

lithograph

29.7 x 21.4 cm

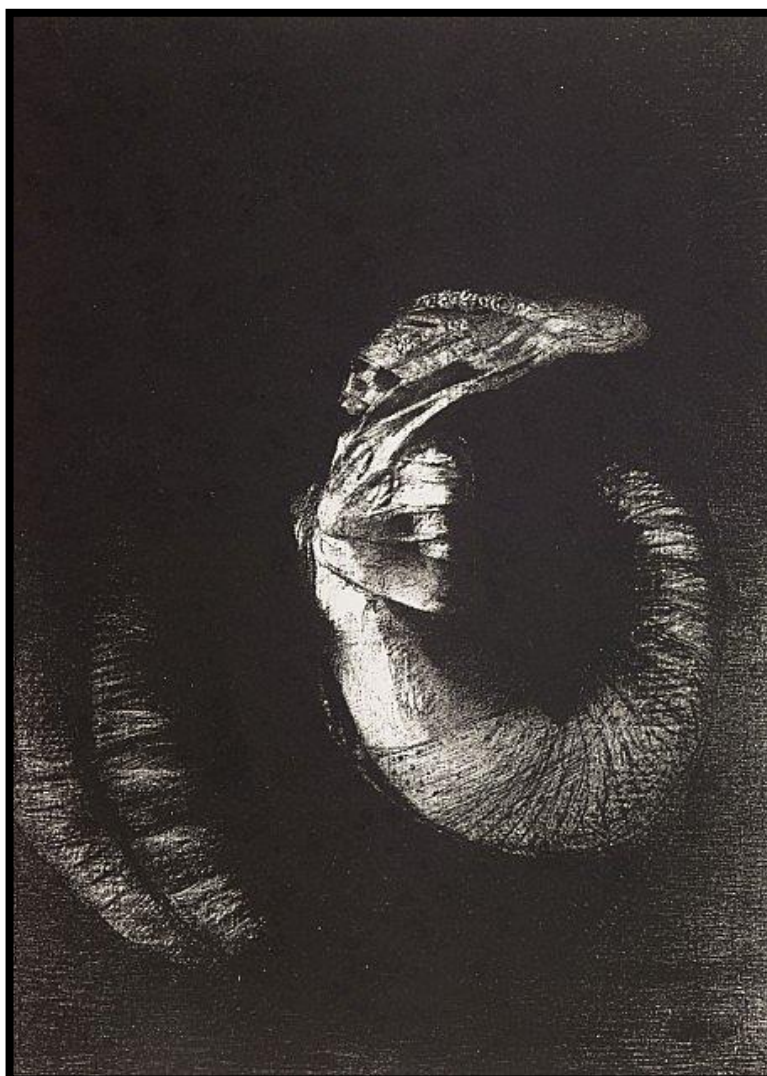


Image location: New York, Museum of Modern Art [126.1956.6]

Plate 51.
Cat Fish (Namazu-e)

(artist unknown)
1855
woodblock print on paper
(dimensions unknown)



Image location: Kyoto, International Research Centre for Japanese Studies

Plate 52.

*And the eyes without heads were floating like molluscs,
No. 13, The Temptation of St. Anthony, third series*

Odilon Redon (1840-1916)

1896

lithograph

32 x 22.4 cm

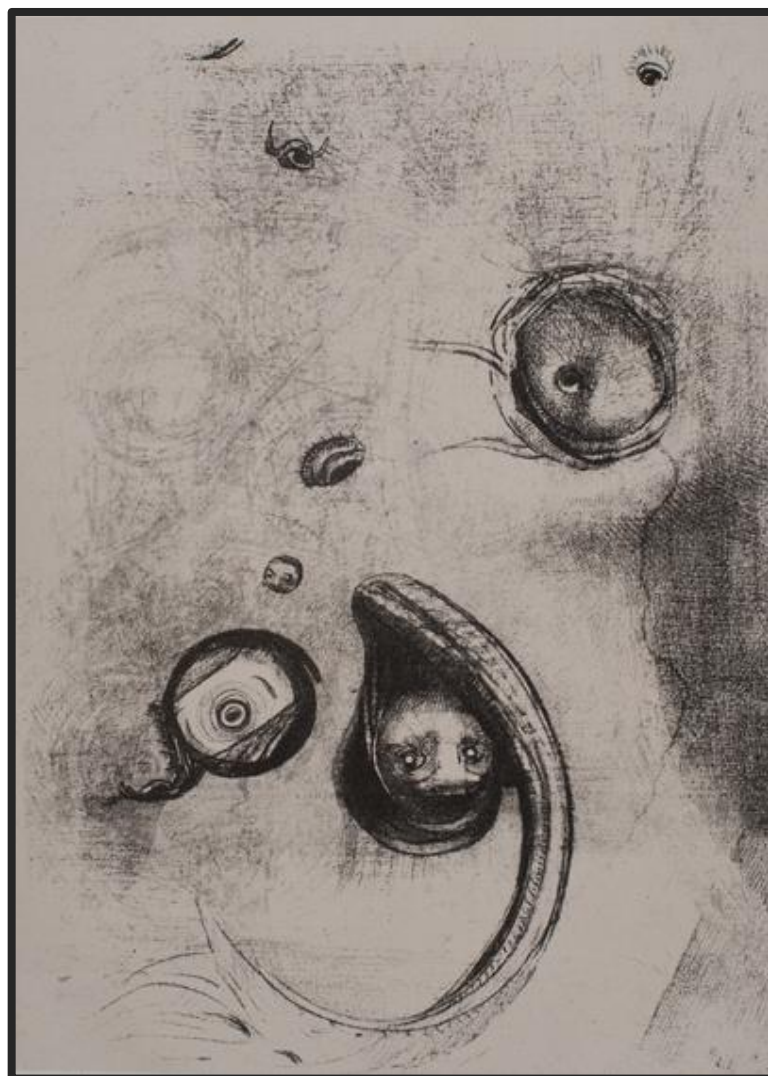


Image location: Cambridge, Fitzwilliam Museum

Plate 53.
Araignée (Spider)

Odilon Redon (1840-1916)

1887

lithograph

27.8 x 2.16 cm

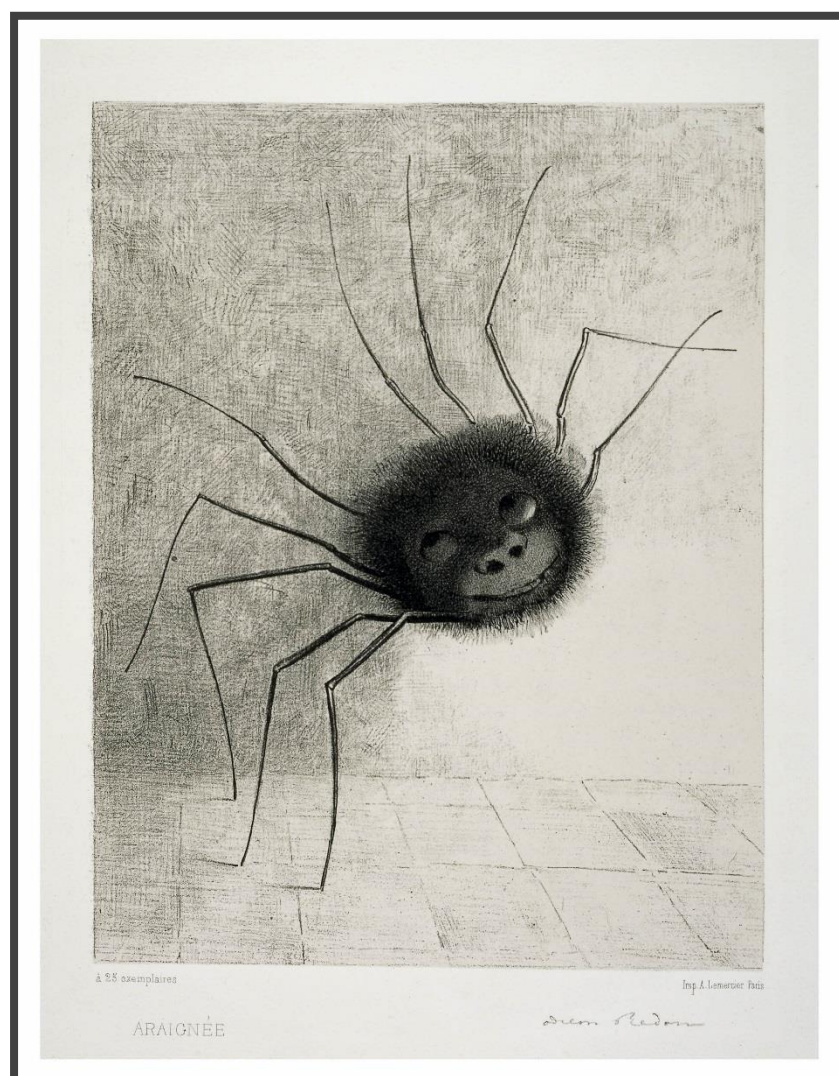


Image location: London, © The Trustees of the British Museum [1888,0619.153]

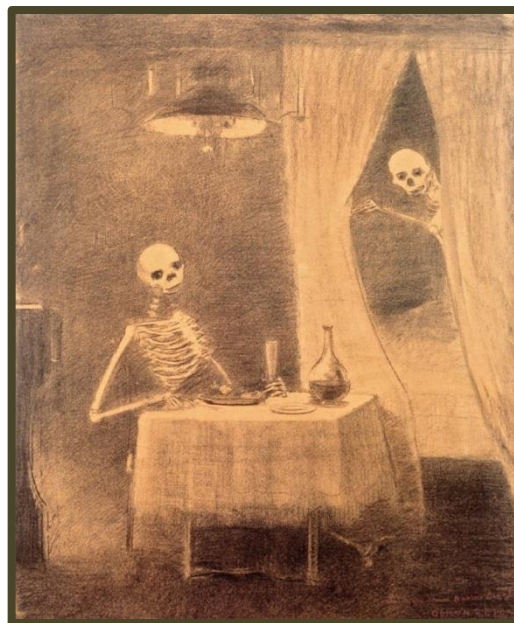
Plate 54.
La Bataille de os (The Battle of the Bones)

Odilon Redon (1840-1916)
1881
charcoal drawing
44.7 x 37.3 cm

Plate 55.
Frolicking Skeletons (detail)

Kawanabe Kyōsai
1870s-1880s
hanging scroll, ink on silk
(dimensions unknown)

a.



b.



Image location: a. Otterlo, Kröller-Müller Museum; b. Richard Harris Collection

Plate 56.
Hantise (Obsession)

Odilon Redon (1840-1916)
1894
lithograph
36.1 x 22.9 cm



56.

Plate 57.
Onoe Kikugorō III as the ghost of Oiwa in Irohagana Yotsuya Kaidan

Utagawa Kuniyoshi (1797-1861)
1833
woodblock print on paper
24.8 x 37.5 cm



57.

Image locatoin: 56. Washington, DC, National Gallery of Art [1951.10.456]; 57. Lyon Collection [<http://www.woodblockprints.org/>]

Plate 58.
Illustration of a *yūrei*,
Hokusai *Manga* Vol. 13: 59

Katsushika Hokusai (1760-1849)
1849
woodcut on paper
15.9 x 22.5 cm

58.



Plate 59.
Blossoming (Éclosion),
No. 1, *Dans le rêve (In the Dream)*

Odilon Redon (1840-1916)
1879
lithograph on paper
32.8 x 25.7 cm

59.



Image location: 58. Paris, Bibliothèque Nationale, Department of Prints & Photography;
59. New York, The Museum of Modern Art

Plate 60.

*Le Polype difforme flottait sur les rivages, sorte de cyclope souriant et hideux (The deformed polyp floated on the shores, a sort of smiling and hideous Cyclops),
No. 3, Les Origines (The Origins)*

Odilon Redon (1840-1916)

1883

lithograph

21.3 x 20 cm

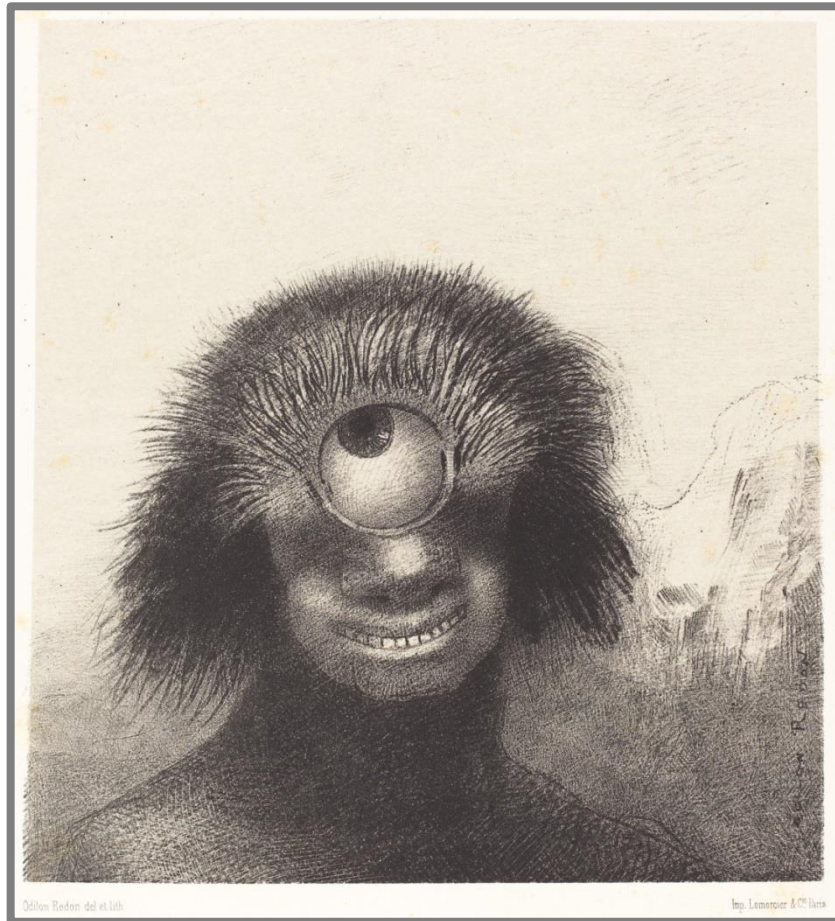


Image location: Washington, DC, National Gallery of Art [1951.10.460]

Plate 61a.

Illustration of a *hitosume-nyūdō*,
Hyakkai-zukan (*The Illustrated Volume of 100 Demons*)

Sawaki Suushi

1737

emaki (picture scroll)

(dimensions unknown)



Image location: Kyoto, International Research Center for Japanese Studies

Plate 61b.

*Kaseneno bobokon (Pussy Demon of Kasane),
Kaidan hyakki yagyō (Ghost Stories: The Night Parade of One
Hundred Demons)*

Utagawa Kuniyoshi (1797-1861)

1836

woodcut on paper

13 x 9 cm



Image location: Kuniyoshi Project

Plate 62.

After Reading a story by Edgar Poe / The Eye

Odilon Redon (1840-1916)

1883

charcoal on paper

40.2 x 33.3 cm



Image location: Santa Barbara, Santa Barbara Museum of Art

Plate 63.

L'Oeuf (The Egg)

Odilon Redon (1840-1916)

1885

lithograph

29.3 x 22.5 cm

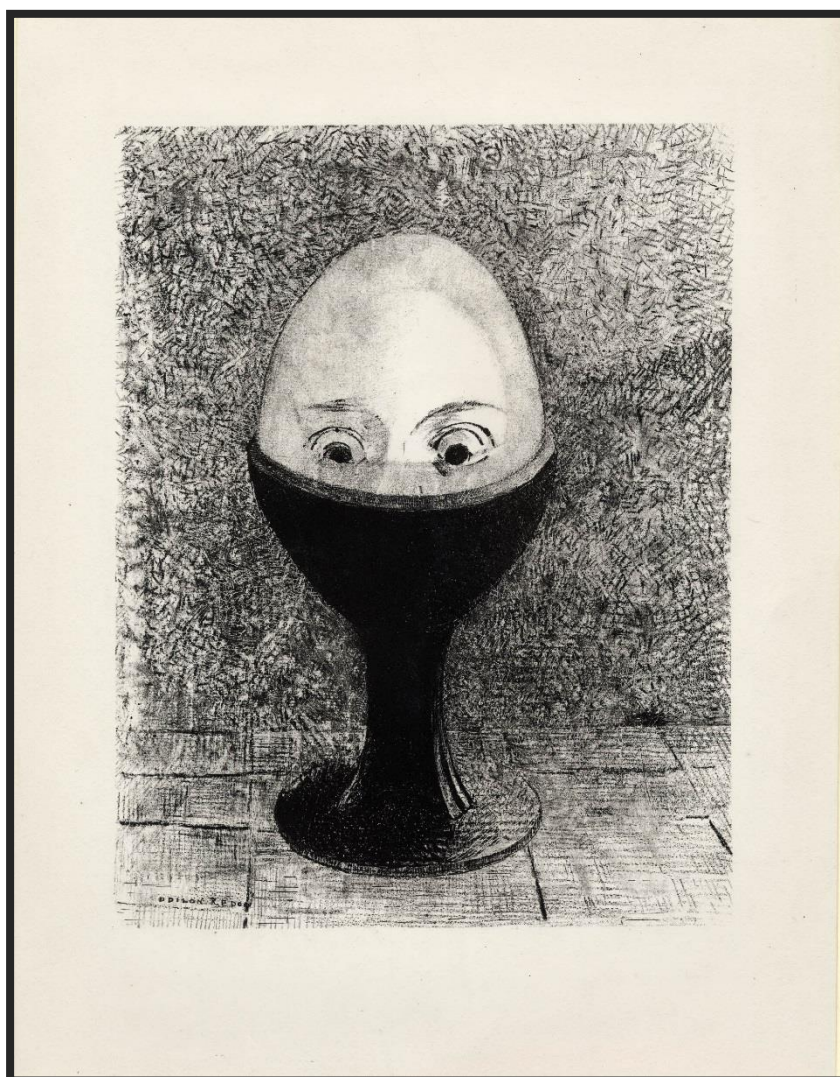


Image location: London, © Trustees of the British Museum [1949,0411.3488]

Plate 64.

a. *Sagifuchi ni Ippon'ashi*,
detail of square seventeen from *Mukashi banashi Bakemono
Sugoroku (Old Monster Yarns Backgammon)*

Utagawa Yoshikazu

1858

woodcut printed board game, ink and color on paper

52 x 81.3 cm

b. *Kasa Ippon-ashi (One Legged Umbrella Demon)*

Gosotei Hirosada (c. 1810-1864)

1855

Chūban



a.



b.

Image location: a. Oregon, USA, Jordan Schnitzer Museum of Art [1969:37.92]; b. Private Collection. Formerly: Somerset, UK, Toshidama Gallery

Plate 65.

Cactus Man

Odilon Redon (1840-1916)

1881

charcoal

49.5 x 37.5 cm



Location: USA, The Ian Woodner Family Collection

Plate 66.

Neko no ateji (Cat Homophones)

Utagawa Kuniyoshi (1797-1861)

1842

woodblock print on paper

36 x 25 cm



Image location: Kuniyoshi Project

Plate 67.

*Different peoples inhabit the countries of the ocean,
La Tentation de Saint-Antoine, Paris*

Odilon Redon (1840-1916)

1896

lithograph on paper

30.8 x 23 cm

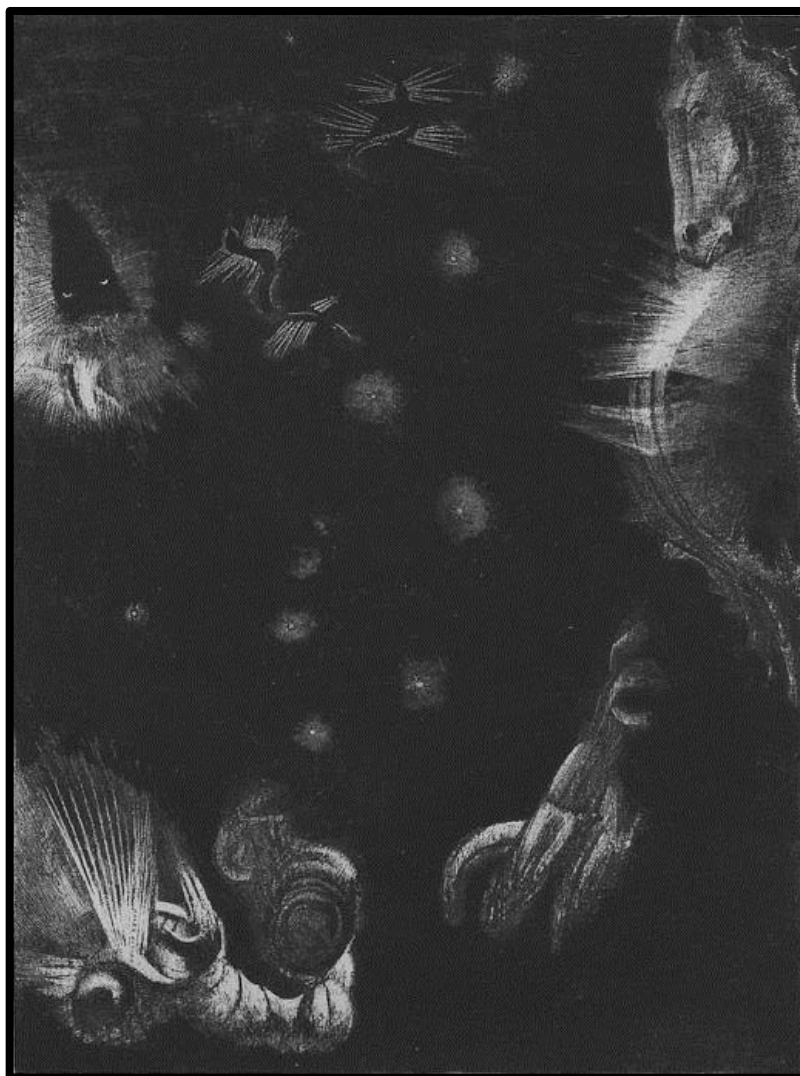


Image location: Cambridge, Fitzwilliam Museum

Plate 68.

The Little One Is Dreaming, Étude
(study)

Paul Gauguin (1848–1903)

1881

oil on canvas

60 x 74 cm



Image location: Copenhagen, Ordrupgaard

Plate 69.

The Yellow Christ

Paul Gauguin (1848-1903)

1889

oil on canvas

92.1 x 73.3 cm

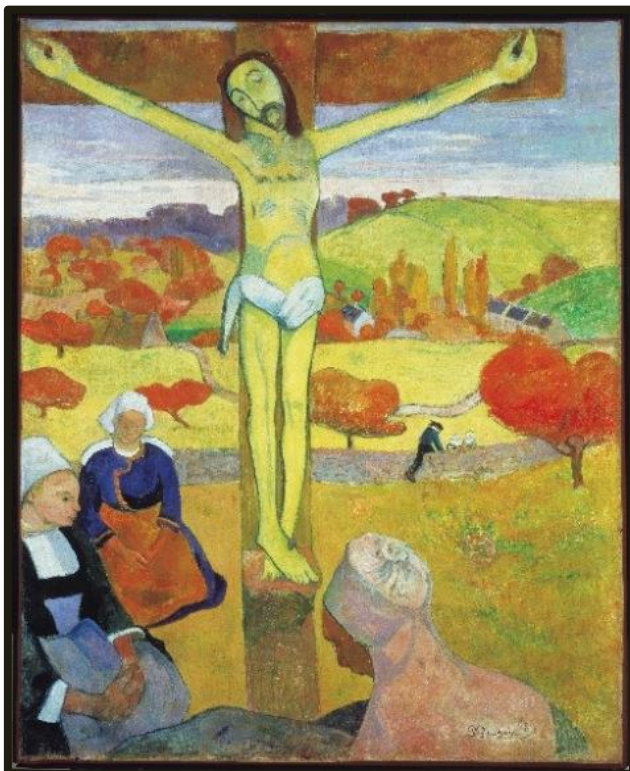
Plate 70.

Christ from the Trémalo chapel, Pont Aven

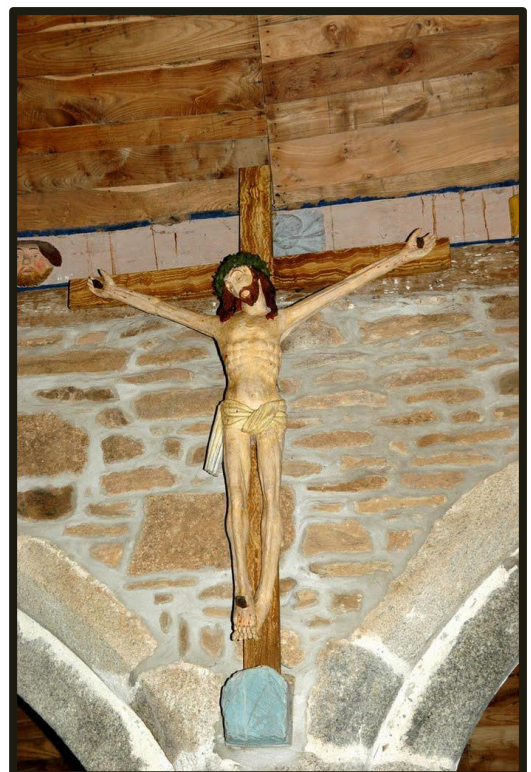
(artist unknown)

painted wood carving

(details unknown)



69.



70.

Image location: 69. New York, Albright-Knox Art Gallery; 70. Pont Aven, Trémalo chapel

Plate 71.
Soyez mystérieuses (Be Mysterious)

Paul Gauguin (1848-1903)

1890

bas-relief, oil on wood

73 x 95 cm

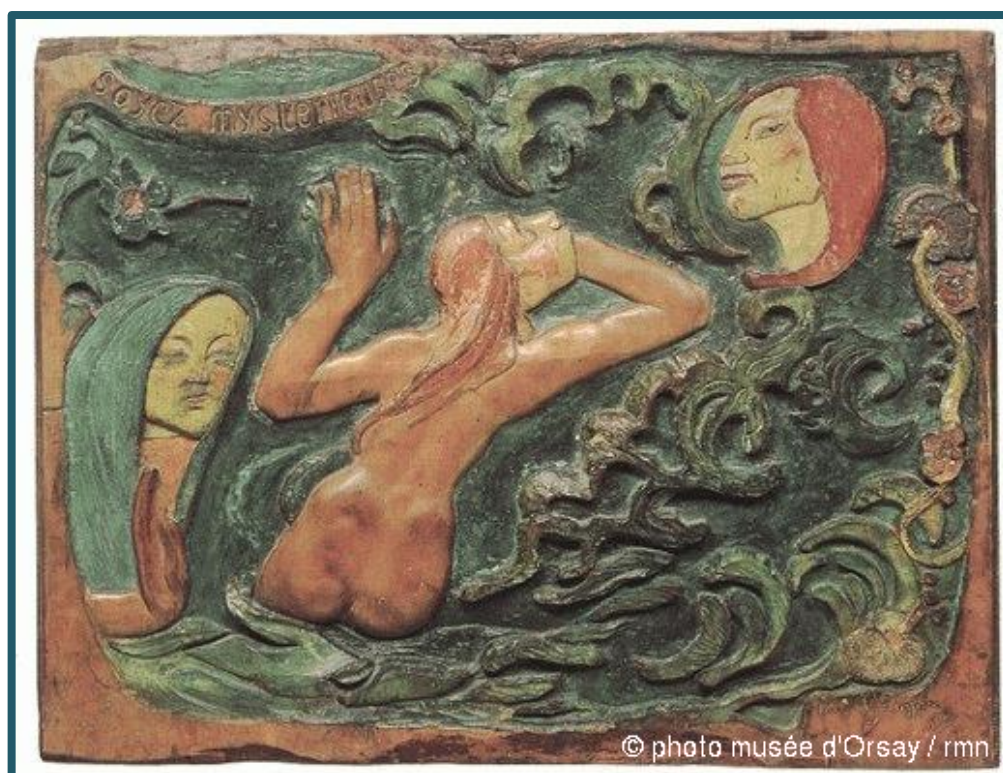


Image location: Paris, Musée d'Orsay [RF 3405]

Plate 72.
Still Life with Horse's Head

Paul Gauguin (1848-1903)

1886

oil on canvas

49 x 38.5 cm

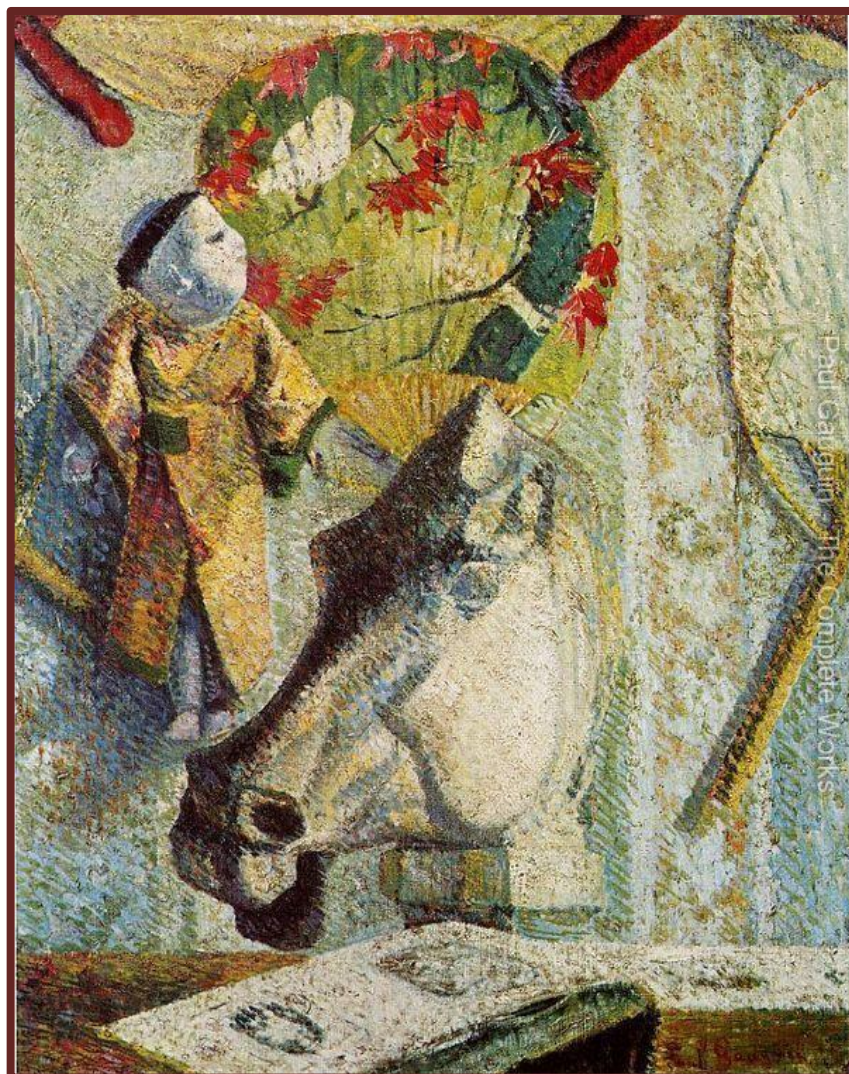


Image location: Tokyo, Bridgestone Museum of Art, Ishibashi Foundation

Plate 73.

Nature morte à l'estampe japonaise (Still Life with Japanese Print)

Paul Gauguin (1848-1903)

1888

oil on canvas

31.7 x 55.5 cm

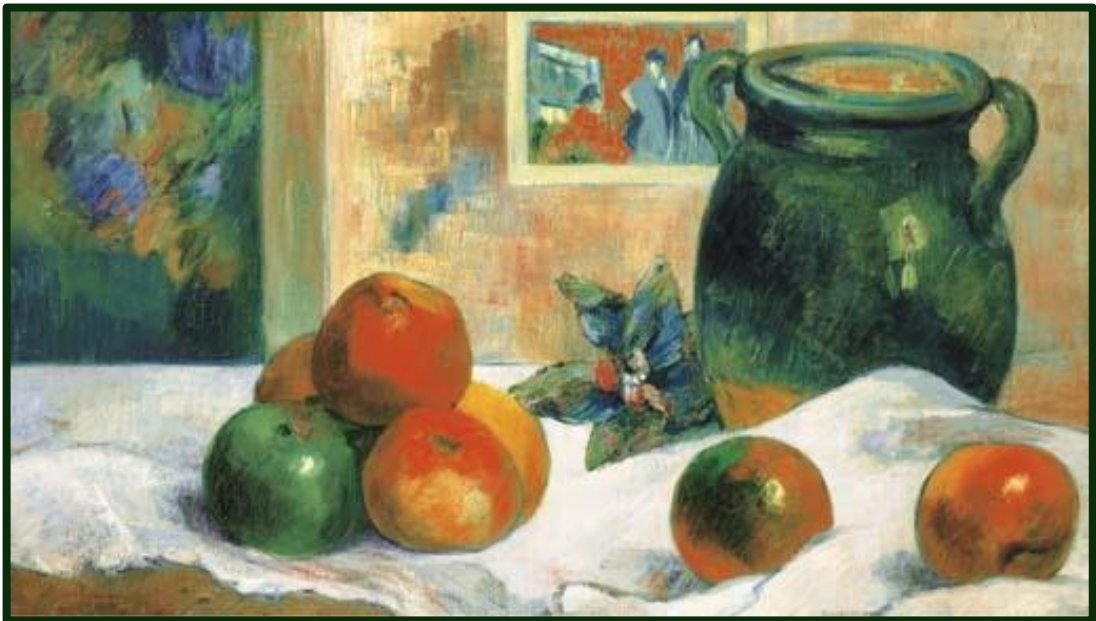


Image location: New York, Christie's Impressionist and Modern Art (Evening Sale), 7th May 2003

Plate 74.

Nature morte à l'estampe japonaise (Still Life with Japanese Print)

Paul Gauguin (1848–1903)

1889

oil on canvas

72.4 x 93.7 cm



Image location: Tehran, Museum of Contemporary Art

Plate 75.

Ichikawa Kodanji playing the Hunter Nagohe

Utagawa Yoshiiku (1833-1904)

1864

woodblock print on paper

(dimensions unknown)



Image location: Frome, Toshidama Gallery

Plate 76.

The Schuffenecker Family / Schuffenecker's Studio

Paul Gauguin (1848-1903)

1889

oil on canvas

73 x 92 cm

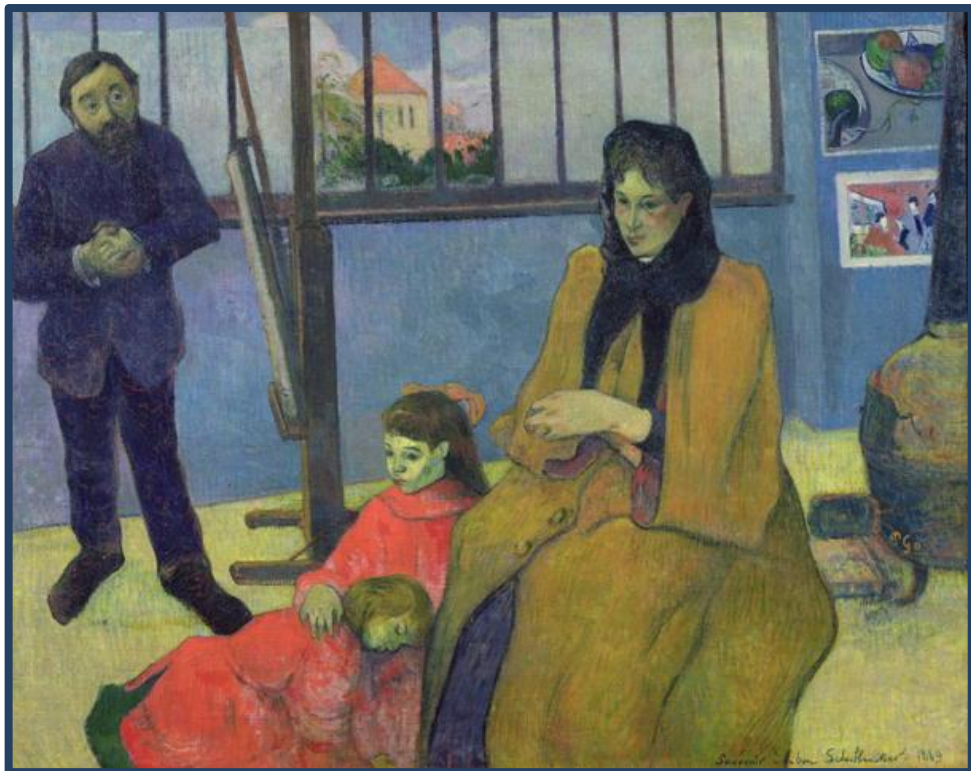


Image location: Paris, Musée d'Orsay [RF 1959 8]

Plate 77.

Vision After the Sermon: Jacob Wrestling with the Angel

Paul Gauguin (1848-1903)

1888

oil on canvas

74.4 x 93.1 cm

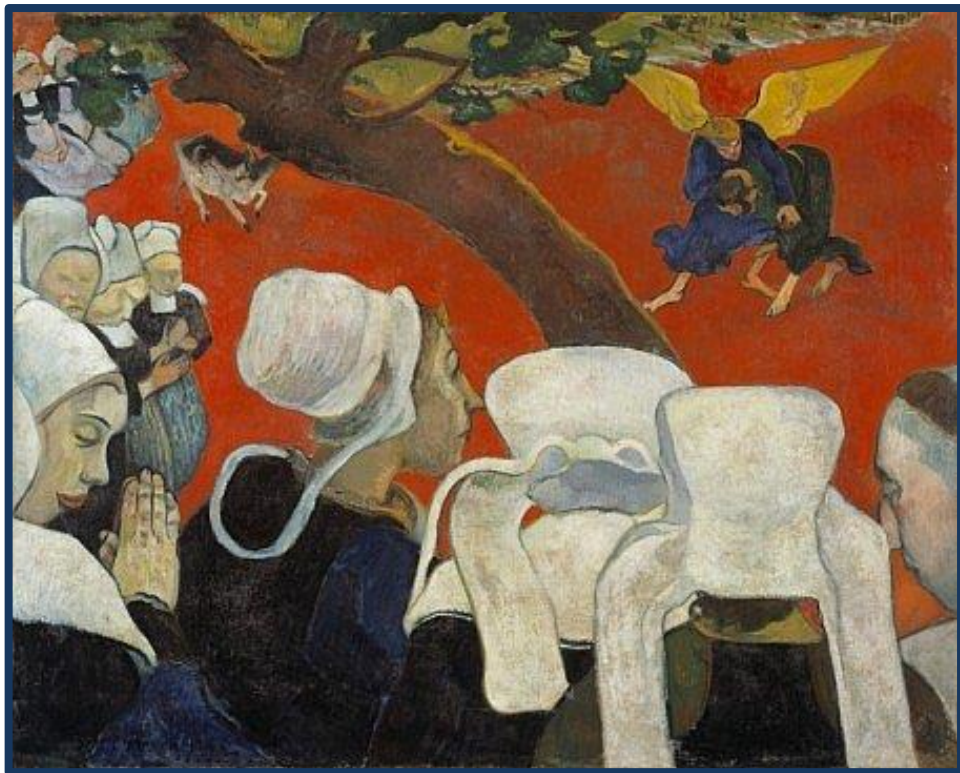


Image location: Edinburgh, National Galleries of Scotland

Plate 78.

*Hodogaya, Totsuka, Fujisawa and Hiratsuka,
Tokaido gojisan-eki yon shuku meisho (Fifty-three Stations of the
Tōkaidō Road)*

Utagawa Kuniyoshi (1797-1861)

c. 1835

ōban yoko-e

25.5 x 37.2 cm



Image location: London, © Trustees of the British Museum [2008,3037.03304]

Plate 79.
Still Life with Onions, Beetroot and a Japanese Print

Paul Gauguin (1848-1903)

1889

oil on canvas

40.6 x 52.1 cm

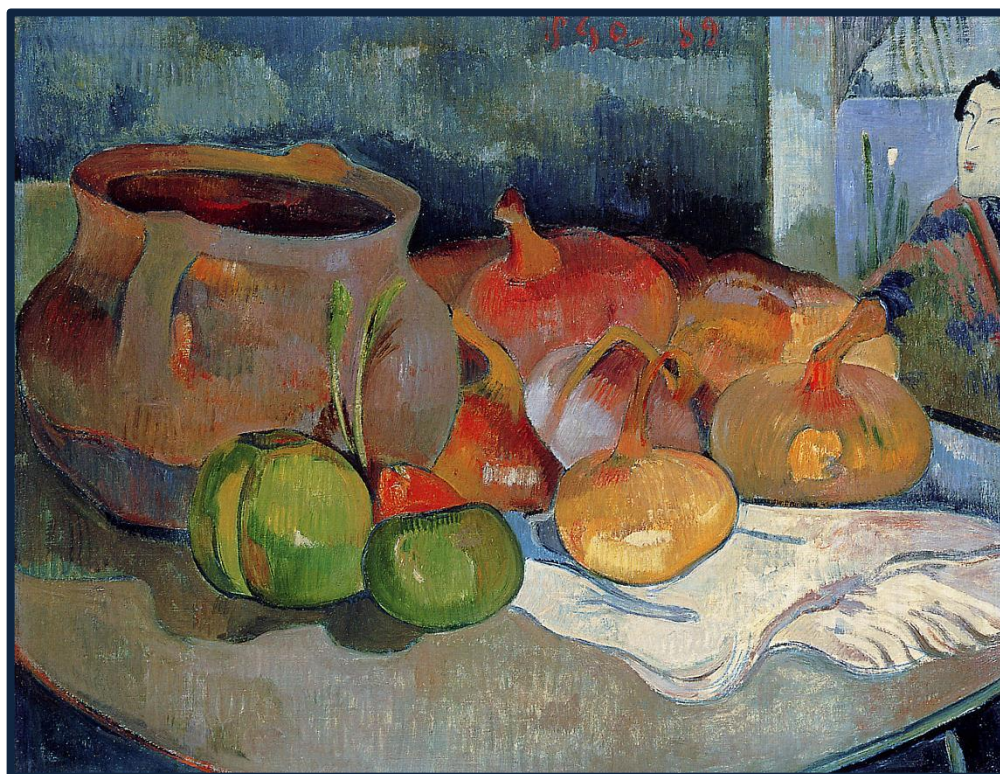


Image location: Private collection

Plate 80.
Warai Hannya,
Hyaku Monogatari

Katsushika Hokusai (1760-1849)
c. 1830
woodblock print on paper
(dimensions unknown)



Image location: London, © Trustees of the British Museum [1921,0511,0.14]

Plate 81.
Self-Portrait

Paul Gauguin (1848-1903)
1889
oil on wood
79.2 x 51.3 cm

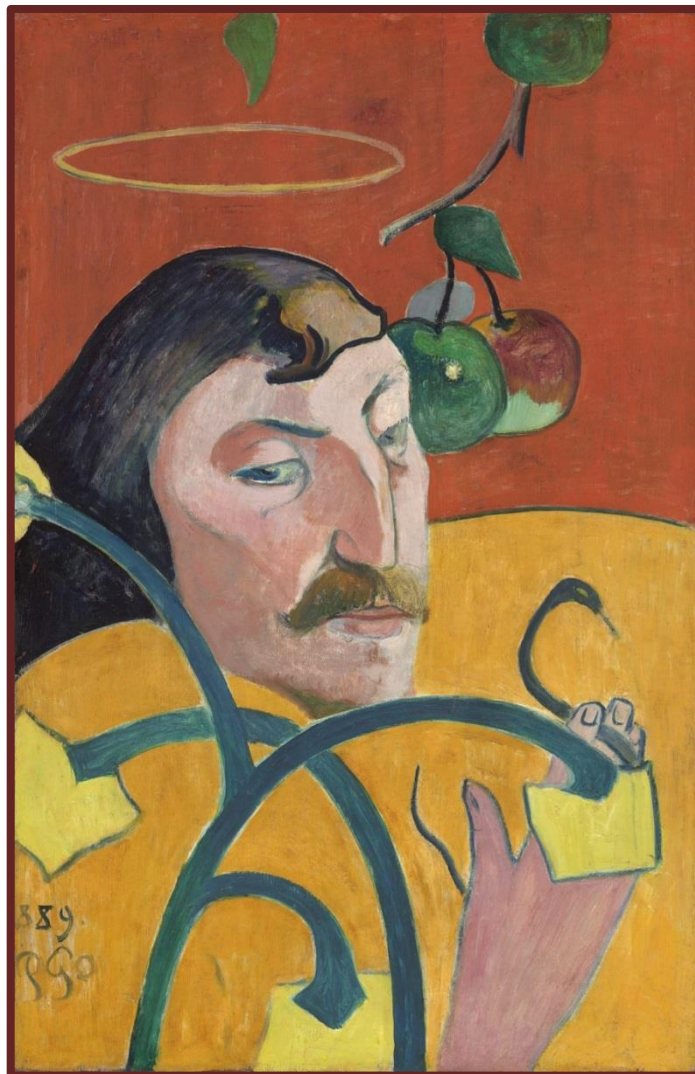


Image location: Washington DC, The National Gallery of Art

Plate 82.

Soyez amoureuses vous serez heureuses (Be In Love and You Will Be Happy)

Paul Gauguin (1848-1903)

1889

carved and painted linden wood

95 x 72 x 6.4 cm

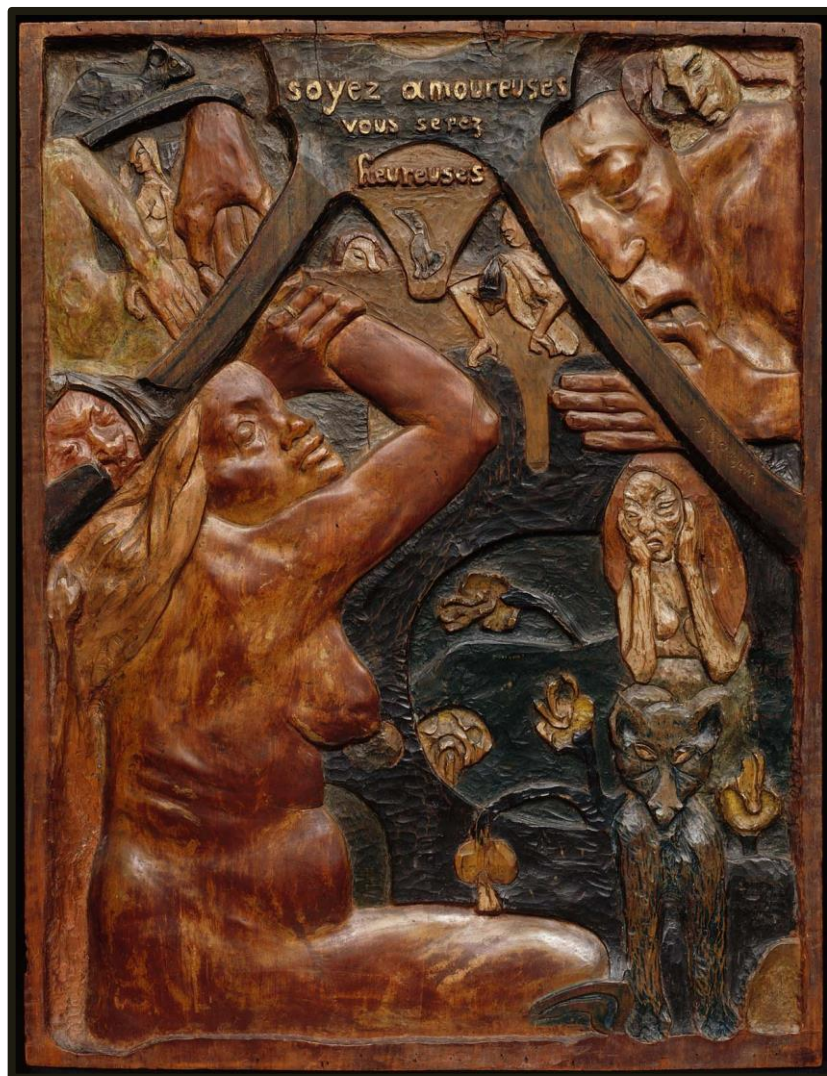


Image location: Boston, Museum of Fine Arts Boston [57.582]

Plate 83.

Soyez mystérieuses (Be Mysterious),
Maison du jour (House of Pleasure)

a. bottom left panel

b. all panels

Paul Gauguin (1848-1903)

1901-1902

bas-relief, polychromed sequoia wood

32 x 153 x 3 cm



a.



b.

Image location: Paris, Musée d'Orsay [RF 4290]

Plate 84.

Head of a Young Girl

Paul Gauguin (1848-1903)

1893-1894

Clay, varnished and heightened in places with dark red pigment

15.2 x 26 x 18 cm



Image location: Carmen Thyssen-Bornemisza Collection on deposit at Madrid, Museo Thyssen-Bornemisza [CTB.DEC99.36]

Plate 85.
The Loss of Virginity

Paul Gauguin (1848–1903)
1890-1891
oil on canvas
90.2 x 130.2 cm



Image location: Norfolk (VA), Chrysler Museum of Art [71.510]

Plate 86.

The actor Nakamura Shikan as Minamoto (no) Kurō Kitsune

Kinusada

1867

ōban nishiki-e

37.2 x 25.3 cm



Image location: van Rappard-Boon, van Gulik & van Bremen-Ito, 2006: 227, pl. 315

Plate 87.

Kuzunoha-gitsune doji ni wakaruru no zu (*The Fox-Woman
Kuzunoha Leaving Her Child*),
Shinkei sanjurokkaisen (*New forms of thirty-six ghosts*)

Tsukioka Yoshitoshi (1839-1892)

1890

woodblock print on paper

36.9 x 25.1 cm



Image location: Claremont, California, Ruth Chandler Williamson Gallery, Scripps College
[93.3.41]

Plate 88.
Princess Yaegaki

Utagawa Kuniyoshi (1797–1861)
19th century
woodblock print on paper
36.8 x 25.4 cm



Image location: New York, Metropolitan Museum of Art

Plate 89.

Otome (Maiden)

Waken nazorae Genji (Japanese and Chinese Comparisons for the Chapters of the Genji)

Utagawa Kuniyoshi (1797-1861)

1855

ōban tate-e

36.9 x 25.9 cm



Image location: London, © Trustees of the British Museum [2008,3037.06303]

Plate 90.

a. *Tahitian Woman with Evil Spirit*
(recto)

Paul Gauguin (1848-1903)
c. 1900
oil transfer drawing.
(dimensions unknown)

Tahitian Woman with Evil Spirit
(verso)

Paul Gauguin (1848-1903)
c. 1900
graphite and colored pencil
(dimensions unknown)

b. *Head with Horns & Tongan Young Woman Living in Fiji*

Paul Gauguin (1848-1903)
1895-97.
wood with traces of paint
(dimensions unknown)

(photographer unknown)
c. 1900.
photograph
(dimensions unknown)

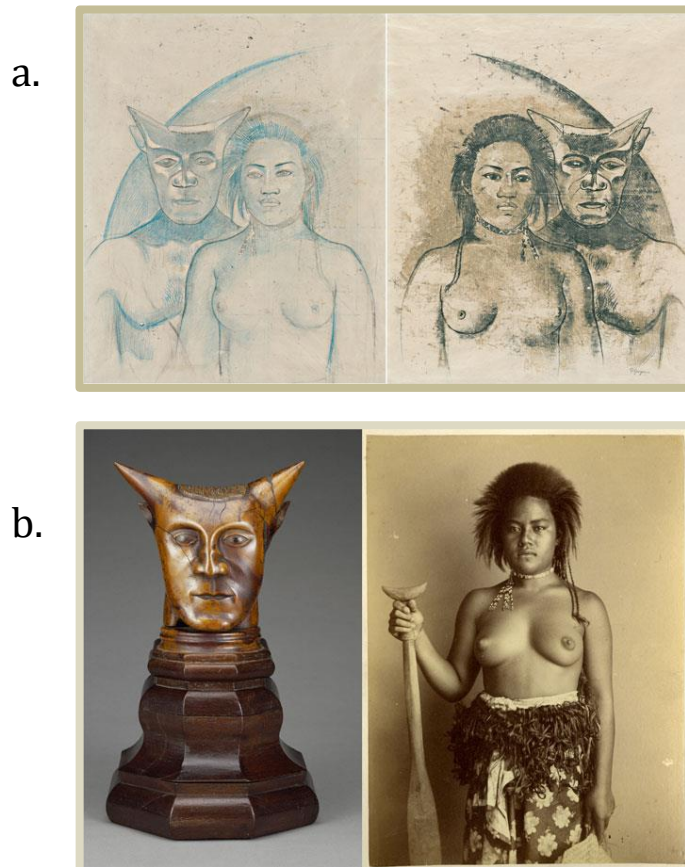


Image location: a. New York, The Museum of Modern Art; b. New York, The Museum of Modern Art; Los Angeles, The J. Paul Getty Museum; London, The British Museum

Plate 91.

Sadanobu-ko yoru kyuchu ni kai o osoreshimu no zu (Sadanobu Threatening a Demon in the Palace at Night), Shinkei sanjurokkaisen (New forms of thirty-six ghosts)

Tsukioka Yoshitoshi (1839-1892)

1889

woodblock print on paper

36.8 x 25.2 cm



Plate 92.

Spectres (Ghosts) [Musée du Louvre title]

Noa Noa (sketchbook)

Paul Gauguin (1848-1903)

c. 1890s

page from a sketchbook

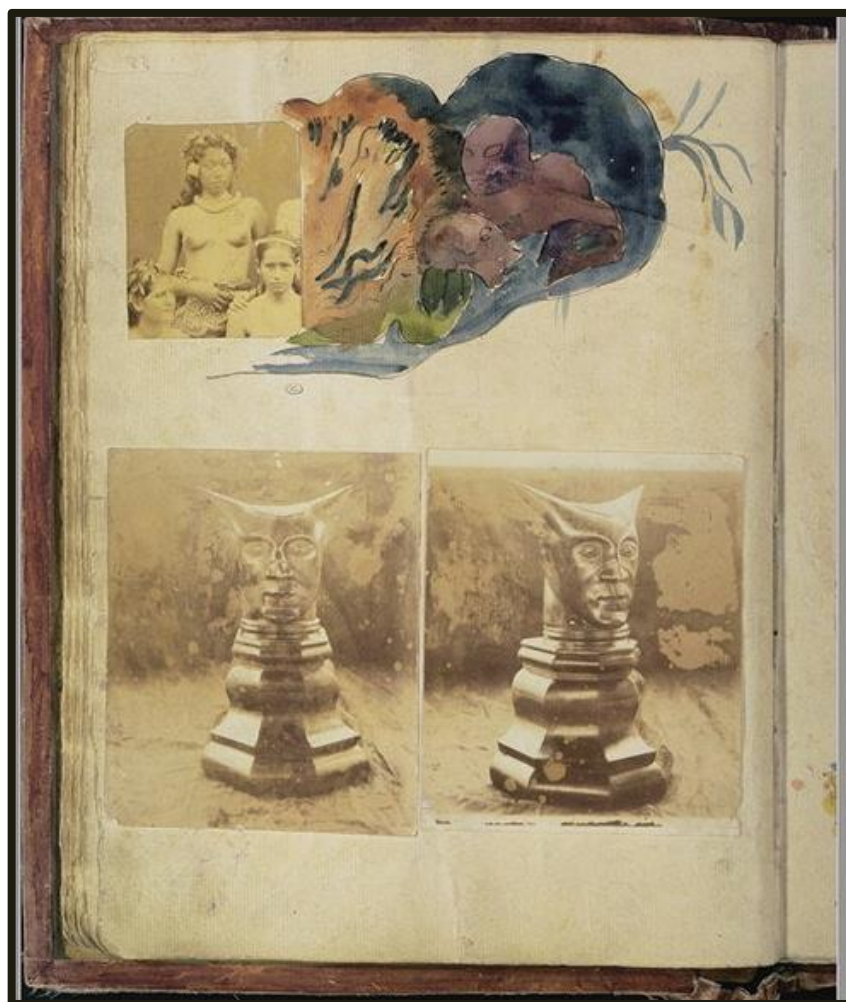


Image location: Paris, Département des Arts graphiques, Musée du Louvre [RF 7259, 60]

Plate 93.

a. *Notes manuscrites (Handwritten notes)* [Musée du Louvre title]
Noa Noa (sketchbook)

b. *Personnage japonais (Japanese character)* [Musée du Louvre title]
Noa Noa (sketchbook)

Paul Gauguin (1848-1903)
c. 1890s
pages from a sketchbook



a.

b.

Image location: Paris, Département des Arts graphiques, Musée du Louvre [RF 7259, 230; RF 7259.71]

Plate 94.

a. *Notes manuscrites et copies d'après Delacroix (Handwritten notes and copies after Delacroix)* [Musée du Louvre title],
Noa Noa

Paul Gauguin (1848-1903)

c. 1890s

page from a sketchbook

b. *Fujiwara no Sanekata and Sparrows, Manga*

Katsushika Hokusai (1760-1849)

1815-1865

20.3 x 14 cm

woodcut on paper



a.



b.

Image location: a. Paris, Département des Arts graphiques, Musée du Louvre [RF 7259, 235] Image location: b. New York, Ronin Gallery

Plate 95.

Noa Noa & Nanso Satomi hakken den

a. Paul Gauguin (1848-1903)

c. 1890s

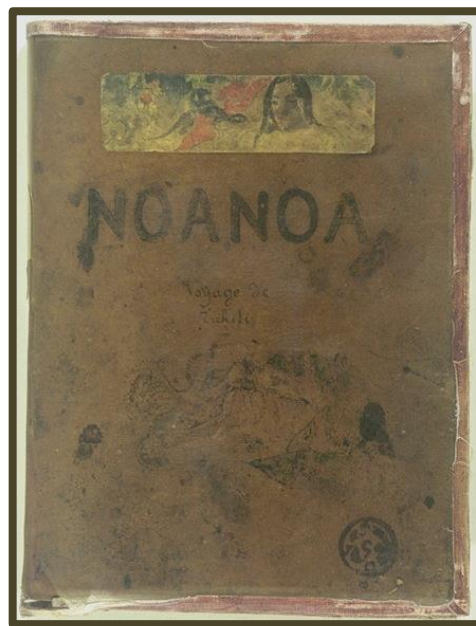
front cover from a sketchbook

b. Kyokutei Bakin, Yanagawa Shigenobu, et al.

1814 to 1841

22.8 x 16 cm

front cover



a.



b.

Image location a.: Paris, Département des Arts graphiques, Musée du Louvre [RF 7259, 1]; b.: Japan, National Diet Library

Plate 96.
Portrait of Jacob Meyer de Haan

Paul Gauguin (1848-1903)

1889

oil on wood

79.6 x 51.7 cm

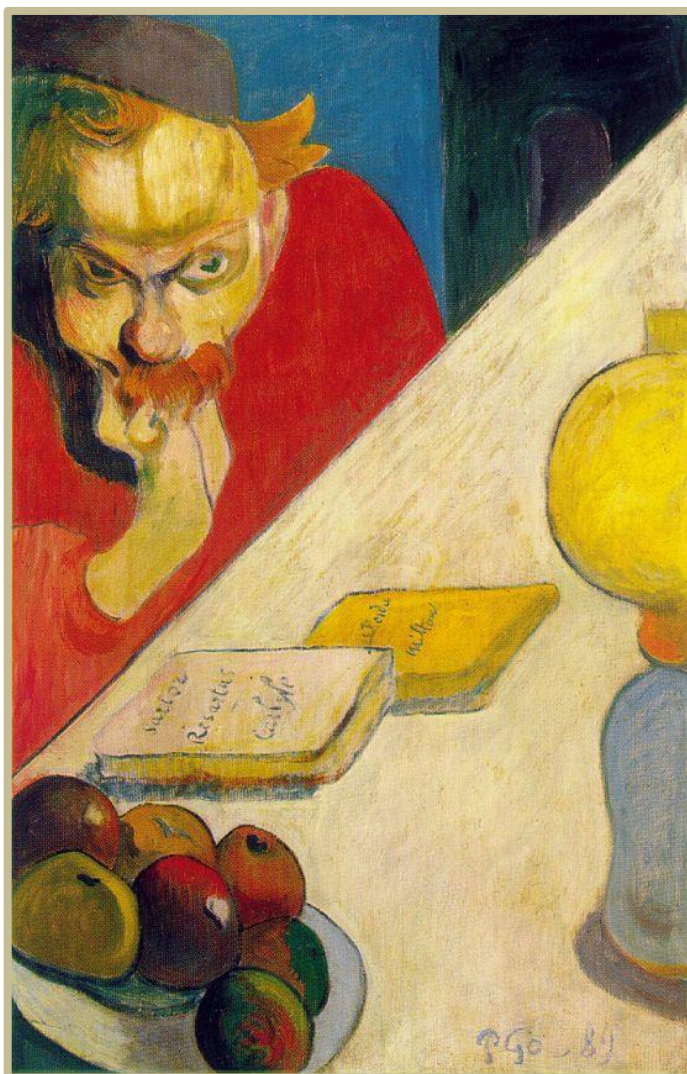
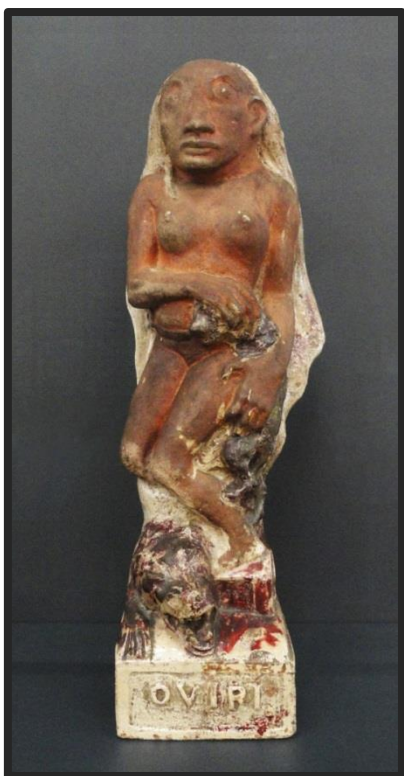


Image location: New York, Museum of Modern Art

Plate 97.
Oviri
(front & back)

Paul Gauguin (1848-1903)
c. 1894
Medium: Stoneware
75 x 19 x 27 cm



a.



b.

Image location: Paris, © RMN-Grand Palais (Musée d'Orsay)

Plate 98.

Manao Tupapau (The Spirit of the Dead Watches)

Paul Gauguin (1848 - 1903)

1892

oil on canvas

73 x 92 cm

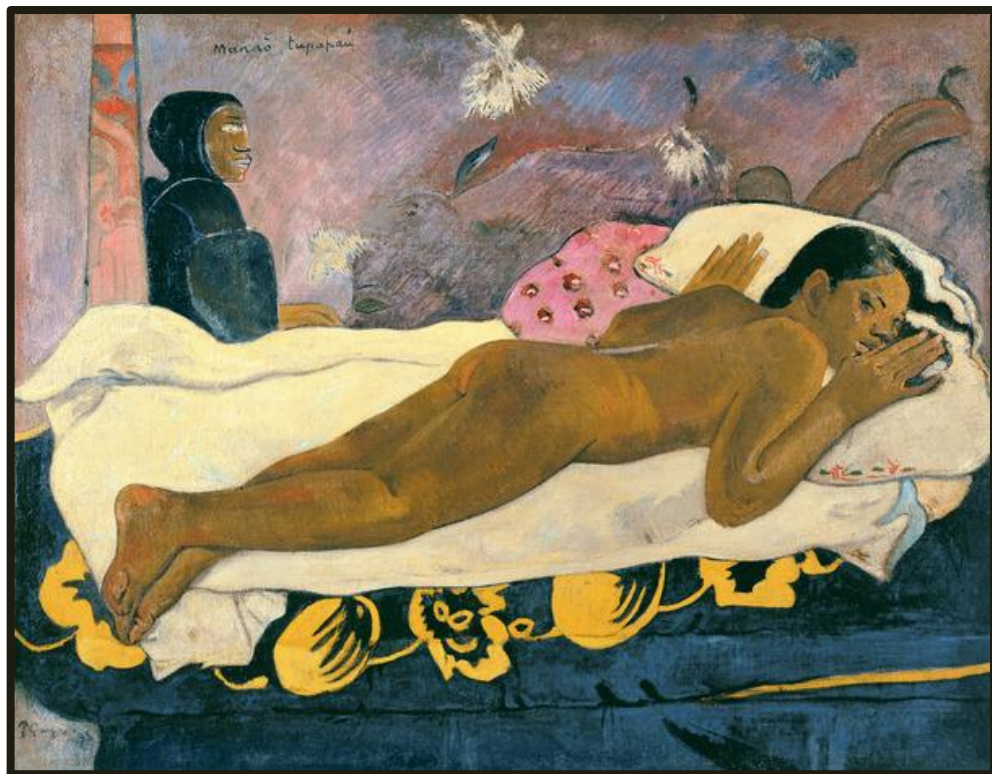


Image location: New York, Albright-Knox Art Gallery

Plate 99.

Poster for Bing Exhibition in London (1889)

Frank Brangwyn (1867-1956)

1899 (printed)

colour lithograph on paper

(dimensions unknown)

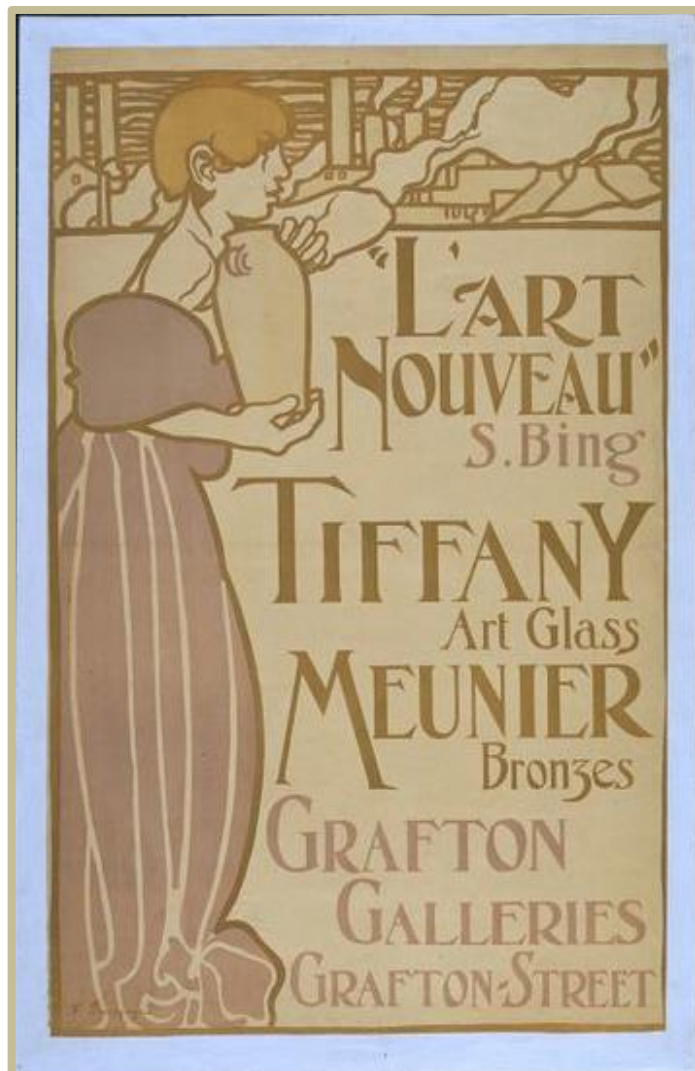


Image location: London, Victoria & Albert Museum [E.450-1965]

Plate 100.
Belt buckle, with lily pads and blossom

Henri Vever
gold, enamel and diamond
c.1900
(dimensions unknown)



Image location: Boston, Museum of Fine Arts Boston

Plate 101.

a. *Assyrienne* (comb)

Henri and Paul Vever; Eugène Grasset (1845-1917)

c. 1900

carved tortoiseshell, gold, enamel and sapphires
(dimensions unknown)

b. *Apparitions* (brooch)

Henri and Paul Vever; Eugène Grasset (1845-1917)

1900

Repoussé gold; translucent and opaque cloisonné enamel; ivory; topaz cabochons
6.2 x 3.9 x 1.3 cm

a.



b.



Image location: b. Paris, © RMN-Grand Palais (Musée d'Orsay)

Plate 102.
Un Autre Monde
(frontispiece)

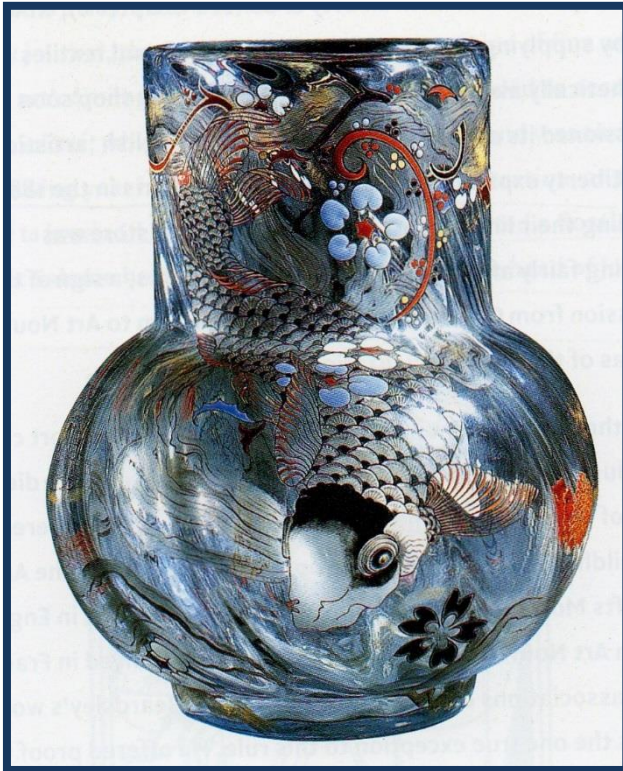
J. J. Grandville (1803-1847)
1843-1844
(details unknown)



Image location: Paris, Bibliothèque Nationale

Plate 103.
Vase La Carpe

Émile Gallé (1846-1904)
1878
glass
(dimensions unknown)



view a.



view b.

Plate 104.

Saito Oniwakamaru, "Young Devil Child" (Benkei) fighting the giant carp in the waterfall of Bishamon ga taki, Ikkai zuihitsu (Essays by Yoshitoshi)

Tsukioka Yoshitoshi (1839-1892)

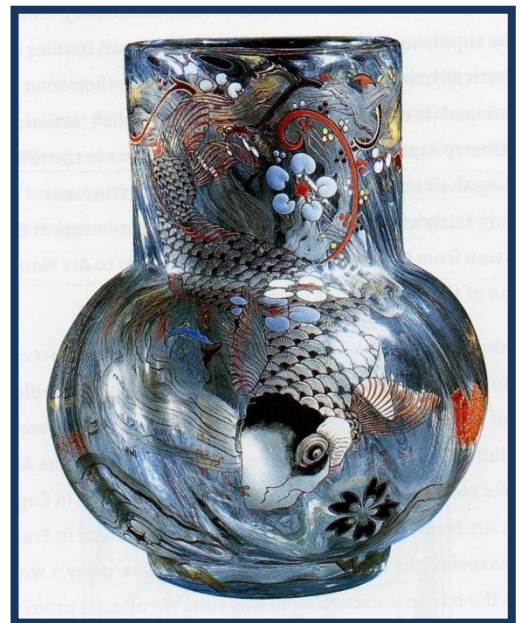
c. 1872

woodblock print on paper

dimensions unknown



104.



103a.

Plate 105.
Gyoran Kannon

Katsushika Hokusai (1760-1849)

1849

ink and paper

63.5 x 36.2 cm



105.



103b.

Plate 106.
Carp Vase

Eugène Rousseau (1827-1891)
1878-1884
layered and engraved glass



Image location: Baltimore, The Walters Art Museum [47.384]

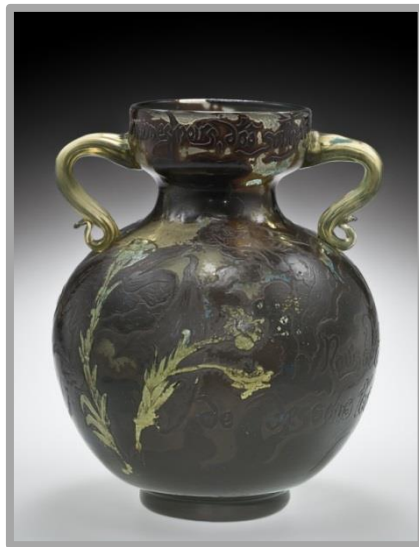
Plate 107.

Les Hommes Noirs (The Dark Men)

Émile Gallé (1846-1904) & Victor Prouvé (1858-1943)

c. 1900

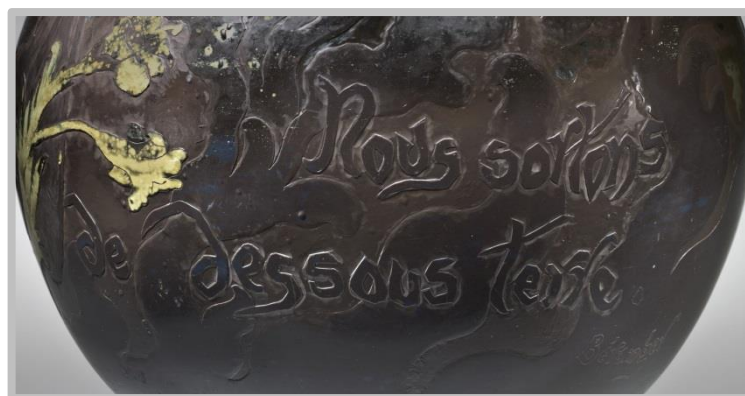
blown and cased glass, cut, acid-etched, engraved, polished, applied silver stain
38.1 x 32.1 cm



a.



b.



c.

Image location: Corning, The Corning Museum of Glass [2011.3.1]

Plate 108.
Gaki Zoshi (Stories of Hungry Ghosts)

(artist unknown)
12th century
emaki
26.8 x 138.4 cm

a.



b.



c.



Image location: Kyoto, Kyoto National Museum [AK229]

Plate 109.

a. *Gaki Zoshi* (*Stories of Hungry Ghosts*)
(detail)

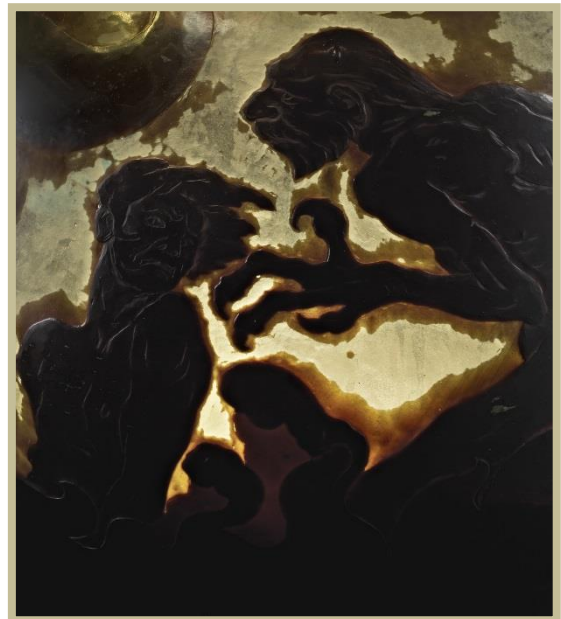
(artist unknown)
12th century
emaki
26.8 x 138.4 cm



a.

b. *Les Hommes Noirs* (*The Dark Men*)
(detail)

Émile Gallé (1846-1904) & Victor Prouvé (1858-1943)
c. 1900
blown and cased glass, cut, acid-etched, engraved, polished, applied silver stain
38.1 x 32.1 cm



b.

Image location: a. Corning, The Corning Museum of Glass [2011.3.1]; b. Kyoto, Kyoto National Museum [AK229]

Plate 110.

a. *Vase with face*

Pierre-Adrien Dalpayrat (1844-1910)
Alphonse Voisin-Delacroix (1857-1893)
(maker)
1892-93
Stoneware
64.8 x 42.9 x 40.6 cm

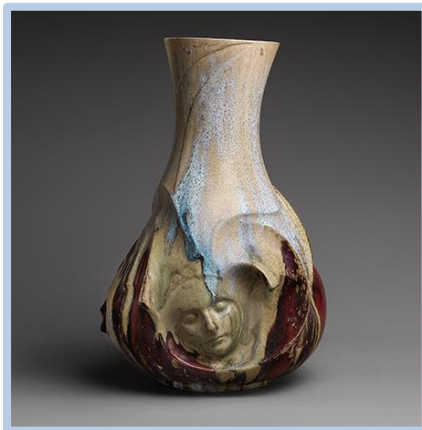
b. *The Opera of the Sea*

Margaret Macdonald Mackintosh (1864-1933)
c. 1902
inlaid gesso panel

c. *The Opera of the Sea*

Margaret Macdonald Mackintosh (1864-1933)
c. 1910
oil and tempera on sized paper
144 x 160 cm

a.



b.



c.



Image location: a. New York, The Metropolitan Museum of Art; b. London, © The Fine Art Society [FAS71068]; c. New York, Museum of Modern Art [SC510.1953]

Plate 111.

O Grave, where is thy Victory?

Jan Theodore Toorop (1858 - 1928)

1892

drawing

60.4 x 75.3 cm



Image location: Otterlo, Rijksmuseum Kroller-Muller [RP-T-1960-243]

Plate 112.

The Three Fiancées

Jan Theodore Toorop (1858 - 1928)

1893

drawing on paper

78 x 98 cm



Image location: Otterlo, Kröller-Müller Museum

Plate 113.

Fatality

Jan Theodore Toorop (1858-1928)

1893

chalk and pencil on paper

60 x 75 cm



Image location: Otterlo, Rijksmuseum Kroller-Muller [JHG179920]

Plate 114.
Shipwreck

Jan Theodore Toorop (1858-1928)
1895
ink and coloured chalk on paper
17.2 x 28.5 cm

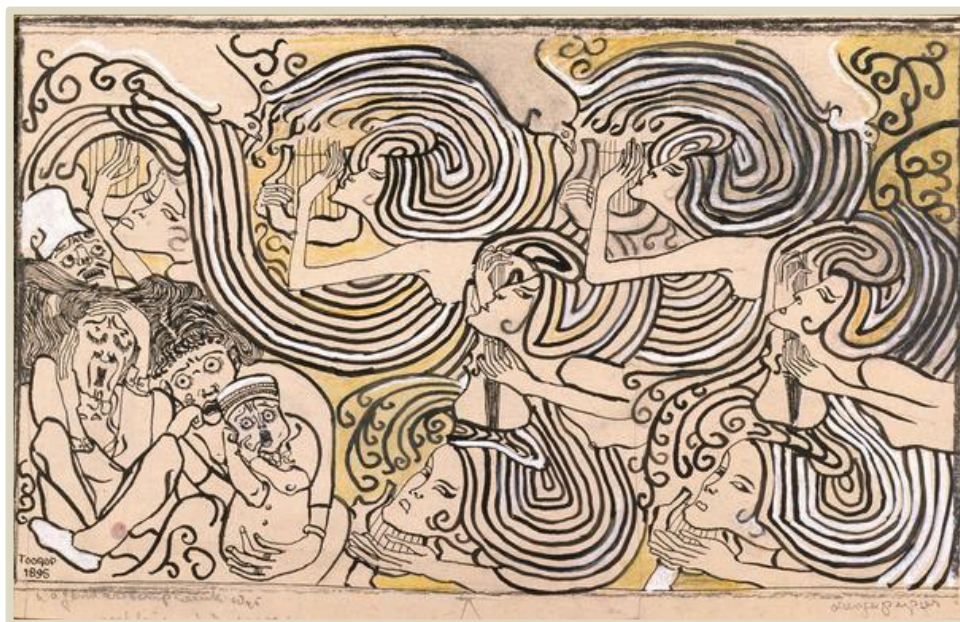


Image location: Private Collection

Plate 115.

Satan's Treasures

Jean Delville (1867-1953)

1895

oil on canvas

338 x 368 cm

Plate 116.

The Dream of the Fisherman's Wife

Katsushika Hokusai (1760-1849)

c. 1814

woodcut print on paper



115.



116.

Image location: a. Brussels, Musées Royaux des Beaux Arts Belgium

Plate 117.
Still-life with Chinoiserie

James Ensor
1907
oil on canvas
61.5 x 75.2 cm



Image location: Deurie, Belgium, Museum Dhondt-Dhaenens

Plate 118.

My Aunt Asleep Dreaming of Monsters

James Ensor (1860-1949)

c. 1890.

pencil, conté crayon & coloured pencil on paper

21.9 x 30 cm



Image location: Brussels, Royal Museum of Fine Arts

Plate 119.

a. *The Haunted Furniture*

James Ensor (1860-1949)

1888

etching

12.4 x 17 cm

b. *The Haunted Fireplace (Mantelpiece)*

James Ensor (1860-1949)

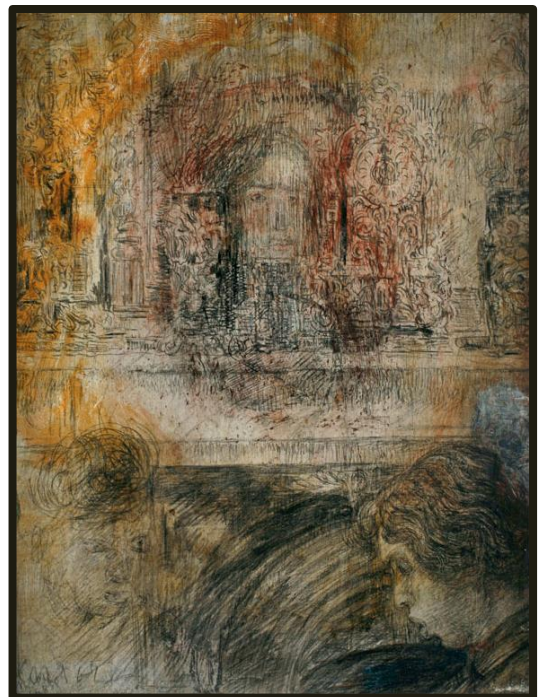
1888

crayon and coloured pencil on panel

24 x 16 cm



a.



b.

Image location: a. Antwerpen, Museum Plantin-Moretus, Print Room [PK.MP.01225]; b. Private collection; previously exhibited: New York, Museum of Modern Art

Plate 120.

Sequelette regardant les chinoiseries (Skeleton Looking at Chinoiseries)

James Ensor (1860-1949)

1885

oil on canvas

61 x 101 cm



Image location: Museum: Ghent, Museum of Fine Arts Ghent [1995-A]

Plate 121.

a. *Chinoiserie een, oude vrouw* (*Chinoiserie an old woman*)

James Ensor (1860-1949)

c. 1896

tekening (drawing)

17.5 x 22.3 cm

b. *Kiyohime Hidaka-gawa ni jitai to naru zu* (*Kiyome Changing into a Serpent at Hidaka River*),

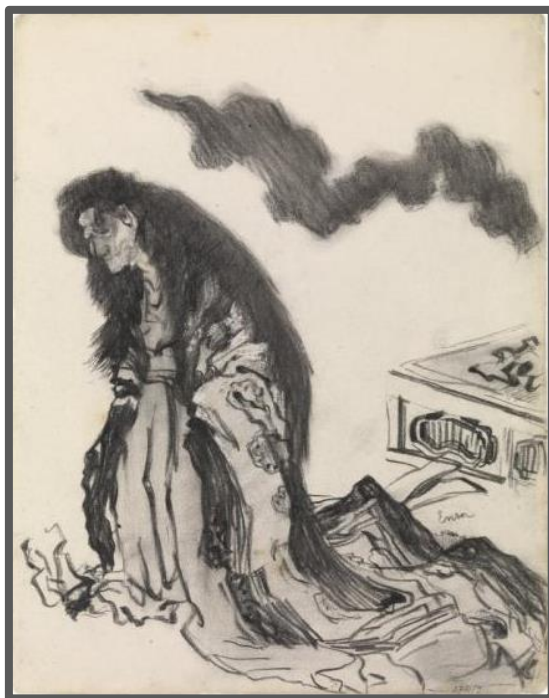
Shinkei sanjurokkaisen (*New forms of thirty-six ghosts*)

Tsukioka Yoshitoshi (1839-1892)

1890

woodblock print on paper

36 x 24.6 cm



a.



b.

Image location: a. Canberra, National Gallery of Australia [NGA 96.612]; b. Antwerp, Museum: Royal Museum of Fine Arts Antwerp [2710/9]

Plate 122.

Chinoiserie, een demon (Chinoiserie, a demon)

James Ensor (1860-1949)

1885

tekening (drawing)

17.3 x 22.3 cm



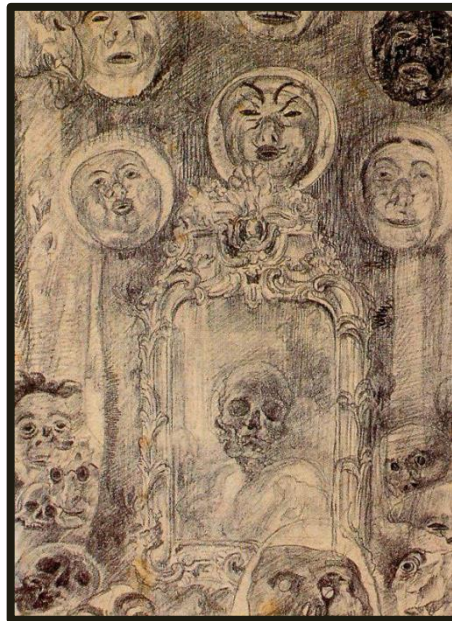
Image location: Antwerp, Royal Museum of Fine Arts Antwerp [2710/4]

Plate 123

a. Mirror with Skeleton

James Ensor (1860-1949)
1890
(details unknown)

a.



b. Jigoku-dayu's reflection

Yoshitoshi
1882
woodblock print on paper
(dimensions unknown)

b.

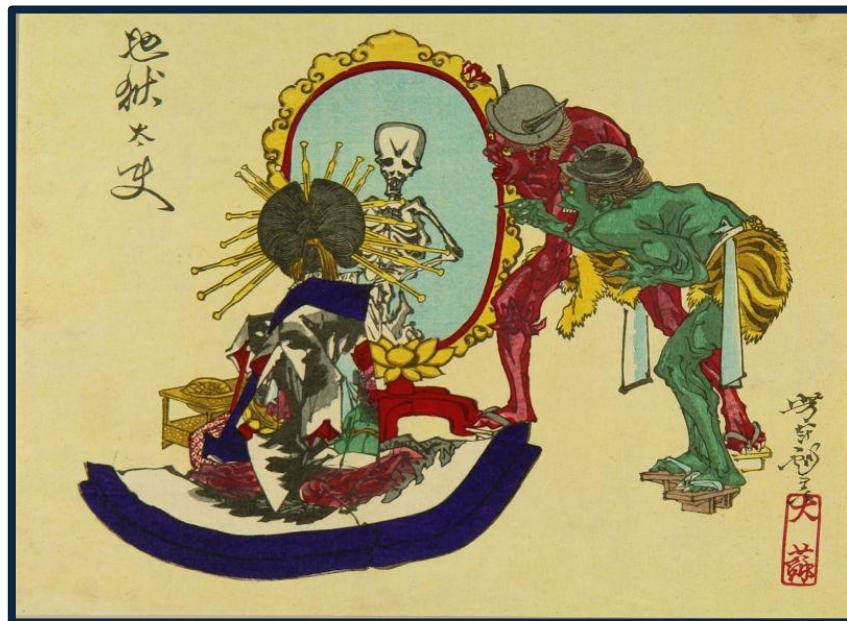


Plate 124.

Pierrot and Skeleton in a Yellow Robe

James Ensor (1860-1949)

1893

schilderij (painting)

48 x 38 cm



Plate 125.

a. *Oni* masks

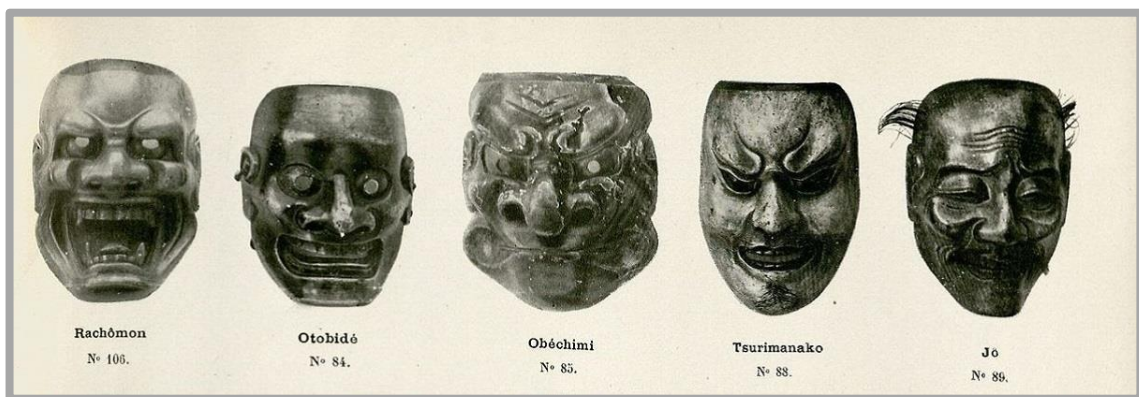
From the collection of Gillot

(details unknown)

b. Masks from the Estste of James Ensor

James Ensor (1860-1949)

(details unknown)



a.



b.

Image location: b. The Hague, Gemeente Museum

Plate 126.
The Sirens

Gustave Klimt (1862-1918)
1889
oil on canvas
82 x 52cm

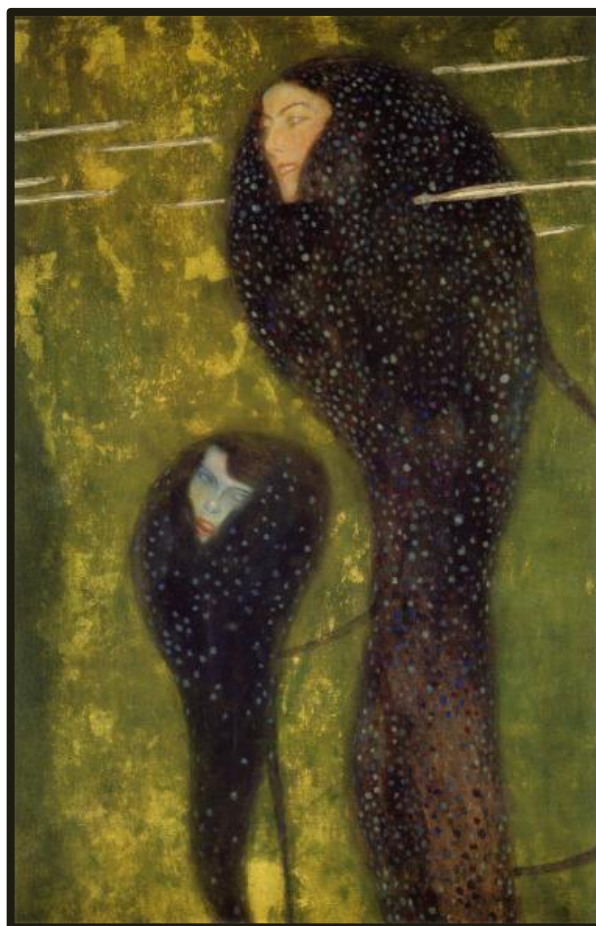


Image location: Vienna, Zentralsparkasse

Plate 127.
The Scream of Nature

Edvard Munch
1893
oil, tempera & crayon on cardboard
91 x 73.5 cm

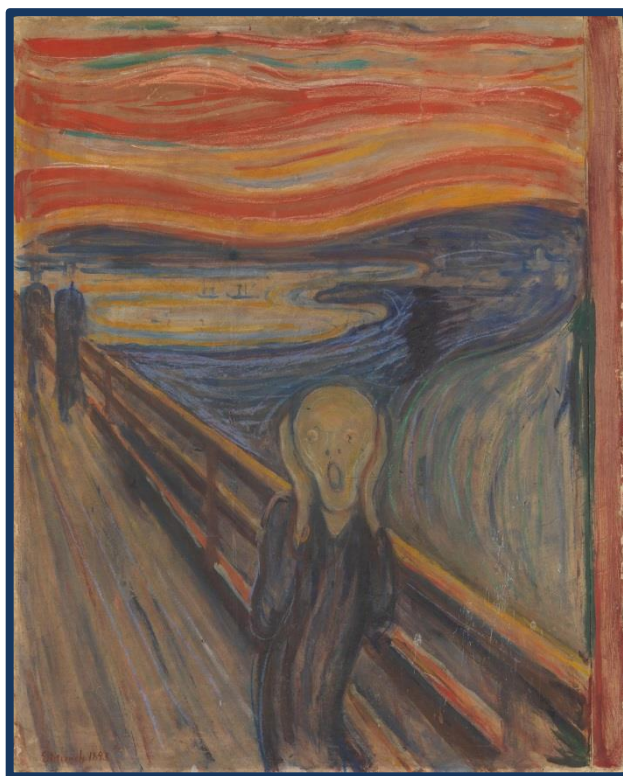


Image location: Oslo, National Gallery